

Datasheet for ABIN185074
anti-MAML1 antibody (N-Term)

2 Images

[Go to Product page](#)

Overview

Quantity:	100 µg
Target:	MAML1
Binding Specificity:	N-Term
Reactivity:	Human
Host:	Goat
Clonality:	Polyclonal
Conjugate:	This MAML1 antibody is un-conjugated
Application:	Western Blotting (WB), ELISA, Immunohistochemistry (IHC)

Product Details

Purpose:	MAML1 / Mastermind
Immunogen:	Peptide with sequence VLPTCPMAEFALPR, from the N Terminus of the protein sequence according to NP_055572.1.
Sequence:	VLPTCPMAEF ALPR
Isotype:	IgG
Cross-Reactivity:	Human, Mouse
Purification:	Purified from goat serum by ammonium sulphate precipitation followed by antigen affinity chromatography using the immunizing peptide.
Grade:	Verified

Target Details

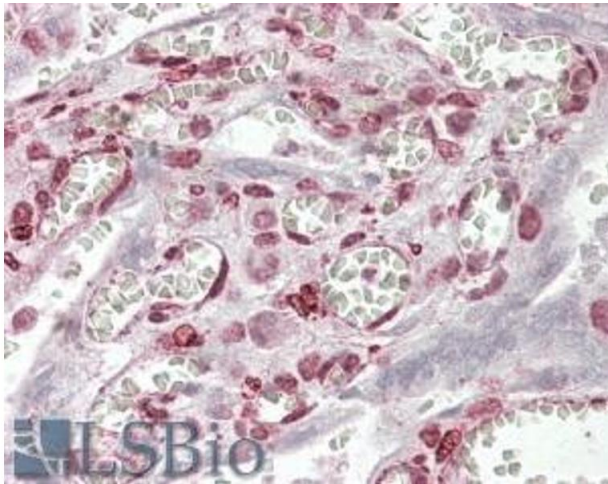
Target:	MAML1
Alternative Name:	MAML1 (MAML1 Products)
Background:	MAML1, mastermind-like 1 (Drosophila), Mam1, Mam-1, KIAA0200, mastermind homolog, mastermind-like 1
Gene ID:	9794
NCBI Accession:	NP_055572
Pathways:	Notch Signaling , Regulation of Muscle Cell Differentiation , Skeletal Muscle Fiber Development

Application Details

Application Notes:	<p>Immunohistochemistry: In paraffin embedded Human Placenta shows nuclear staining in trophoblasts. Recommended concentration, 2.5-3.8 µg/mL.</p> <p>Western Blot: Approx 110 kDa band observed in Human Skeletal Muscle lysates (calculated MW of 108 kDa according to NP_055572.1). Recommended concentration: 0.1-0.3 µg/mL.</p> <p>Peptide ELISA: antibody detection limit dilution 1:128000.</p>
Restrictions:	For Research Use only

Handling

Format:	Liquid
Concentration:	0.5 mg/mL
Buffer:	Supplied at 0.5 mg/mL in Tris saline, 0.02 % sodium azide, pH 7.3 with 0.5 % bovine serum albumin.
Preservative:	Sodium azide
Precaution of Use:	This product contains Sodium azide: a POISONOUS AND HAZARDOUS SUBSTANCE which should be handled by trained staff only.
Handling Advice:	Minimize freezing and thawing.
Storage:	-20 °C
Storage Comment:	Aliquot and store at -20°C, with minimal freeze/thawing. A working aliquot may be refrigerated at 4°C for a few weeks and still remain viable.



Immunohistochemistry

Image 1. ABIN185074 (3.8µg/ml) staining of paraffin embedded Human Placenta. Steamed antigen retrieval with citrate buffer pH 6, AP-staining.



Image 2. ABIN185074 (0.1µg/ml) staining of Human Skeletal Muscle lysate (35µg protein in RIPA buffer). Primary incubation was 1 hour. Detected by chemiluminescence.