

Datasheet for ABIN185076
anti-EPS8 antibody (C-Term)[Go to Product page](#)

1 Image

Overview

| | |
|----------------------|--|
| Quantity: | 100 µg |
| Target: | EPS8 |
| Binding Specificity: | C-Term |
| Reactivity: | Human, Mouse |
| Host: | Goat |
| Clonality: | Polyclonal |
| Conjugate: | This EPS8 antibody is un-conjugated |
| Application: | Western Blotting (WB), ELISA, Immunohistochemistry (IHC) |

Product Details

| | |
|-------------------|---|
| Purpose: | EPS8 |
| Immunogen: | C-SGVESFDEGSSH |
| Sequence: | SGVESFDEGS SH |
| Isotype: | IgG |
| Cross-Reactivity: | Dog, Human, Mouse, Pig, Rat |
| Purification: | Purified from goat serum by ammonium sulphate precipitation followed by antigen affinity chromatography using the immunizing peptide. |
| Grade: | Verified |

Target Details

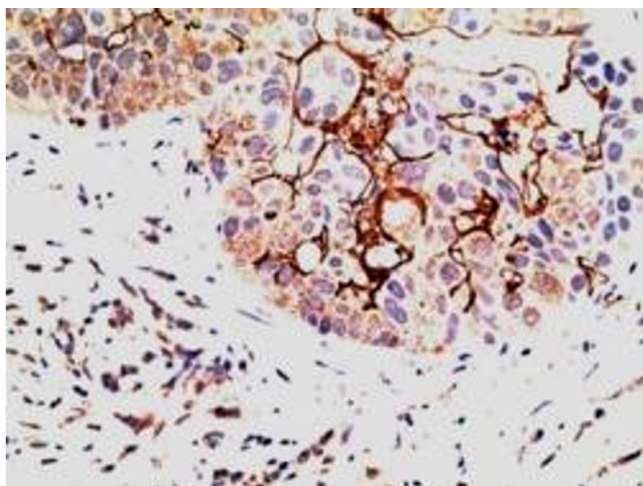
| | |
|-------------------|--|
| Target: | EPS8 |
| Alternative Name: | EPS8 (EPS8 Products) |
| Background: | EPS8, epidermal growth factor receptor pathway substrate 8 |
| Gene ID: | 2059, 13860 |
| NCBI Accession: | NP_004438 |
| Pathways: | EGFR Signaling Pathway , Regulation of Actin Filament Polymerization |

Application Details

| | |
|--------------------|---|
| Application Notes: | Immunohistochemistry: Paraffin embedded Human Kidney and Pancreas. Recommended concentration: 6-8 µg/mL. Western Blot: Approx. 100 kDa band observed in lysates of cell line NIH3T3 (calculated MW of 91.9 kDa according to NP_004438.3). Recommended concentration: 1-3 µg/mL. An additional band of unknown identity was also consistently observed at 70 kDa. This band Peptide ELISA: antibody detection limit dilution 1:8000. |
| Restrictions: | For Research Use only |

Handling

| | |
|--------------------|--|
| Format: | Liquid |
| Concentration: | 0.5 mg/mL |
| Buffer: | Supplied at 0.5 mg/mL in Tris saline, 0.02 % sodium azide, pH 7.3 with 0.5 % bovine serum albumin. |
| Preservative: | Sodium azide |
| Precaution of Use: | This product contains Sodium azide: a POISONOUS AND HAZARDOUS SUBSTANCE which should be handled by trained staff only. |
| Handling Advice: | Minimize freezing and thawing. |
| Storage: | -20 °C |
| Storage Comment: | Aliquot and store at -20°C, with minimal freeze/thawing. A working aliquot may be refrigerated at 4°C for a few weeks and still remain viable. |



Immunohistochemistry

Image 1. ABIN185076 (5µg/ml) staining of paraffin embedded Human Breast Carcinoma. Steamed antigen retrieval with citrate buffer pH 6, AP-staining.