



[Go to Product page](#)

Datasheet for ABIN185082
anti-SAE1 antibody (C-Term)

1 Image

Overview

Quantity:	100 µg
Target:	SAE1
Binding Specificity:	C-Term
Reactivity:	Human
Host:	Goat
Clonality:	Polyclonal
Conjugate:	This SAE1 antibody is un-conjugated
Application:	Western Blotting (WB), ELISA

Product Details

Purpose:	SAE1 / AOS1
Immunogen:	Peptide with sequence MKGNGIVECLGPK, from the C Terminus of the protein sequence according to NP_005491.1.
Sequence:	MKNGIVECL GPK
Isotype:	IgG
Cross-Reactivity:	Cow, Dog, Human
Purification:	Purified from goat serum by ammonium sulphate precipitation followed by antigen affinity chromatography using the immunizing peptide.
Grade:	Verified

Target Details

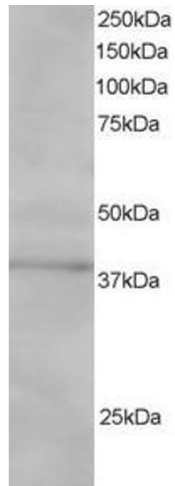
Target:	SAE1
Alternative Name:	SAE1 (SAE1 Products)
Background:	SAE1, AOS1, SUA1, HSPC140, SUMO-1 activating enzyme subunit 1, sentrin/SUMO-activating protein AOS1, SUMO-1 activating enzyme E1 N subunit, ubiquitin-like protein SUMO-1 activating enzyme, SUMO1 activating enzyme subunit 1, FLJ3091, UBLE1A, activator of S
Gene ID:	10055
NCBI Accession:	NP_005491

Application Details

Application Notes:	Western Blot: Approx 40 kDa band observed in Jurkat and 293 cell lysates (predicted MW of 40 kDa according to NP_005491). Recommended for use at 1 µg/mL. Peptide ELISA: antibody detection limit dilution 1:8000.
Restrictions:	For Research Use only

Handling

Format:	Liquid
Concentration:	0.5 mg/mL
Buffer:	Supplied at 0.5 mg/mL in Tris saline, 0.02 % sodium azide, pH 7.3 with 0.5 % bovine serum albumin.
Preservative:	Sodium azide
Precaution of Use:	This product contains Sodium azide: a POISONOUS AND HAZARDOUS SUBSTANCE which should be handled by trained staff only.
Handling Advice:	Minimize freezing and thawing.
Storage:	-20 °C
Storage Comment:	Aliquot and store at -20°C, with minimal freeze/thawing. A working aliquot may be refrigerated at 4°C for a few weeks and still remain viable.



Western Blotting

Image 1. ABIN185082 staining (1 μ g/ml) of Jurkat lysate (RIPA buffer, 30 μ g total protein per lane). Primary incubated for 1 hour. Detected by western blot using chemiluminescence.