



[Go to Product page](#)

Datasheet for ABIN185086
anti-Anillin antibody (C-Term)

3 Images

Overview

Quantity:	100 µg
Target:	Anillin (ANLN)
Binding Specificity:	C-Term
Reactivity:	Human
Host:	Goat
Clonality:	Polyclonal
Conjugate:	This Anillin antibody is un-conjugated
Application:	ELISA, Immunohistochemistry (IHC), Immunofluorescence (IF), Flow Cytometry (FACS)

Product Details

Purpose:	ANILLIN / Scraps (C Terminus)
Immunogen:	Peptide with sequence WQPDACYKPIGKP, from the C Terminus of the protein sequence according to NP_061155.2.
Sequence:	WQPDACYKPI GKP
Isotype:	IgG
Cross-Reactivity:	Cow, Human, Mouse
Purification:	Purified from goat serum by ammonium sulphate precipitation followed by antigen affinity chromatography using the immunizing peptide.
Grade:	Verified

Target Details

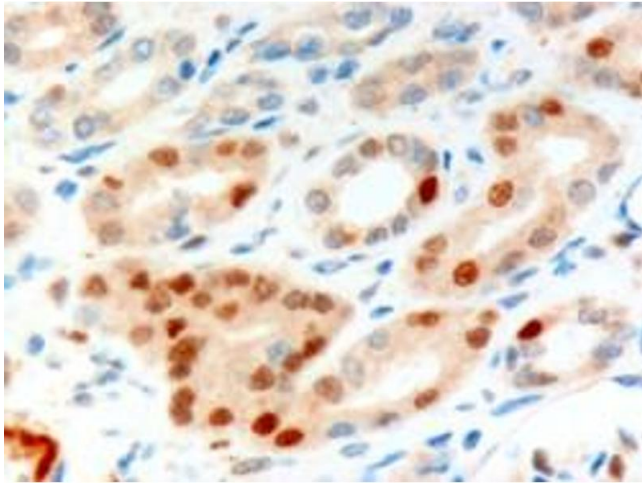
Target:	Anillin (ANLN)
Alternative Name:	ANLN (ANLN Products)
Background:	ANLN, Scraps, ANILLIN, anillin, actin binding protein (scraps homolog, Drosophila), anillin (Drosophila Scraps homolog), actin binding protein, anillin, actin binding protein, DKFZp779A055, scra
Gene ID:	54443, 68743
NCBI Accession:	NP_061155 , NP_001271230 , NP_001271231

Application Details

Application Notes:	Immunohistochemistry: In paraffin embedded Human Kidney shows staining of nuclei in some cells of renal tubules. Recommended concentration: 3-10 µg/mL. Peptide ELISA: antibody detection limit dilution 1:64000.
Comment:	Immunofluorescence: Strong expression of the protein seen in the nuclei of U2OS cells. Recommended concentration: 10µg/ml. Flow Cytometry: Flow cytometric analysis of MCF7 cells. Recommended concentration: 10ug/ml.
Restrictions:	For Research Use only

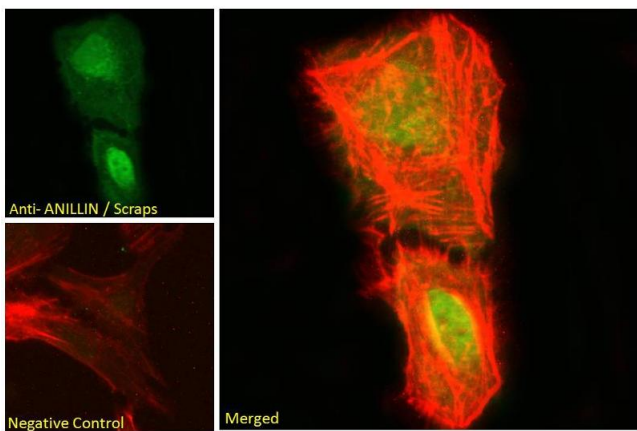
Handling

Format:	Liquid
Concentration:	0.5 mg/mL
Buffer:	Supplied at 0.5 mg/mL in Tris saline, 0.02 % sodium azide, pH 7.3 with 0.5 % bovine serum albumin.
Preservative:	Sodium azide
Precaution of Use:	This product contains Sodium azide: a POISONOUS AND HAZARDOUS SUBSTANCE which should be handled by trained staff only.
Handling Advice:	Minimize freezing and thawing.
Storage:	-20 °C
Storage Comment:	Aliquot and store at -20°C, with minimal freeze/thawing. A working aliquot may be refrigerated at 4°C for a few weeks and still remain viable.



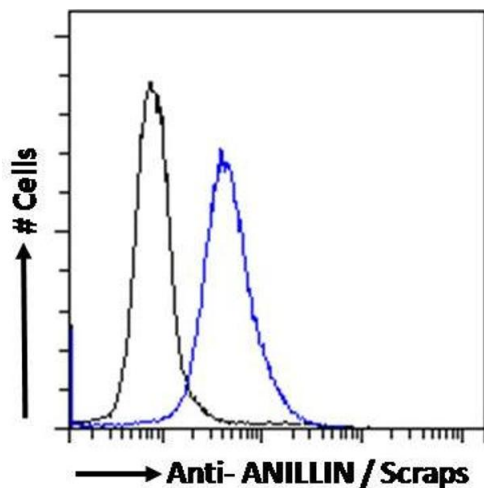
Immunohistochemistry

Image 1. ABIN185086 (10µg/ml) staining of paraffin embedded Human Kidney. Microwaved antigen retrieval with Tris/EDTA buffer pH9, HRP-staining.



Immunofluorescence

Image 2. ABIN185086 Immunofluorescence analysis of paraformaldehyde fixed U2OS cells, permeabilized with 0.15% Triton. Primary incubation 1hr (10ug/ml) followed by Alexa Fluor 488 secondary antibody (2ug/ml), showing nuclear staining. Actin filaments were stained with phalloidin (red) and the nuclear stain is DAPI (blue). Negative control: Unimmunized goat IgG (10ug/ml) followed by Alexa Fluor 488 secondary antibody (2ug/ml).



Flow Cytometry

Image 3. ABIN185086 Flow cytometric analysis of paraformaldehyde fixed MCF7 cells (blue line), permeabilized with 0.5% Triton. Primary incubation 1hr (10ug/ml) followed by Alexa Fluor 488 secondary antibody (1ug/ml). IgG control: Unimmunized goat IgG (black line) fol