

Datasheet for ABIN185088  
**anti-ARHGEF4 antibody (N-Term)**

## 2 Images

[Go to Product page](#)

## Overview

Quantity:	100 µg
Target:	ARHGEF4
Binding Specificity:	N-Term
Reactivity:	Human
Host:	Goat
Clonality:	Polyclonal
Conjugate:	This ARHGEF4 antibody is un-conjugated
Application:	Western Blotting (WB), ELISA

## Product Details

Purpose:	ARHGEF4
Immunogen:	Peptide with sequence PWEEPAGEKPPSCS, from the N Terminus of the protein sequence according to NP_056135.2, NP_127462.1.
Sequence:	PWEEPAGEKP SCS
Isotype:	IgG
Specificity:	This antibody is expected to recognise both reported isoforms (NP_056135.2, NP_127462.1).
Cross-Reactivity:	Human
Purification:	Purified from goat serum by ammonium sulphate precipitation followed by antigen affinity chromatography using the immunizing peptide.
Grade:	Verified

## Target Details

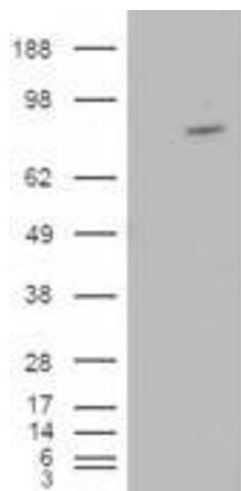
Target:	ARHGEF4
Alternative Name:	ARHGEF4 ( <a href="#">ARHGEF4 Products</a> )
Background:	ARHGEF4, Rho guanine nucleotide exchange factor (GEF) 4, ASEF, GEF4, STM6, KIAA1112, DKFZp434G2016, APC-stimulated guanine nucleotide exchange factor, ASEF1, Rho guanine nucleotide exchange factor 4
Gene ID:	50649
NCBI Accession:	<a href="#">NP_056135</a> , <a href="#">NP_127462</a>
Pathways:	<a href="#">Neurotrophin Signaling Pathway</a>

## Application Details

Application Notes:	Western Blot: Approx 80 kDa band observed in Human Brain lysates and in transfected HEK293 transiently expressing ARHGEF4 (calculated MW of 79.1 kDa according to NP_056135.2 and 76.4 kDa according to 127462.1). Recommended concentration: 2-4 µg/mL. Peptide ELISA: antibody detection limit dilution 1:32000.
Restrictions:	For Research Use only

## Handling

Format:	Liquid
Concentration:	0.5 mg/mL
Buffer:	Supplied at 0.5 mg/mL in Tris saline, 0.02 % sodium azide, pH 7.3 with 0.5 % bovine serum albumin.
Preservative:	Sodium azide
Precaution of Use:	This product contains Sodium azide: a POISONOUS AND HAZARDOUS SUBSTANCE which should be handled by trained staff only.
Handling Advice:	Minimize freezing and thawing.
Storage:	-20 °C
Storage Comment:	Aliquot and store at -20°C, with minimal freeze/thawing. A working aliquot may be refrigerated at 4°C for a few weeks and still remain viable.



### Western Blotting

**Image 1.** HEK293 overexpressing ARHGEF4 (ABIN5377068) and probed with ABIN185088 (mock transfection in first lane).



**Image 2.** ABIN185088 (2µg/ml) staining of Human Brain lysate (35µg protein in RIPA buffer). Primary incubation was 1 hour. Detected by chemiluminescence.