



[Go to Product page](#)

Datasheet for ABIN185092

## anti-ATP6AP2 antibody (C-Term)

3 Images

3 Publications

### Overview

Quantity:	100 µg
Target:	ATP6AP2
Binding Specificity:	C-Term
Reactivity:	Human, Rat
Host:	Goat
Clonality:	Polyclonal
Conjugate:	This ATP6AP2 antibody is un-conjugated
Application:	Western Blotting (WB), ELISA, Flow Cytometry (FACS)

### Product Details

Purpose:	ATP6IP2 / Renin receptor
Immunogen:	Peptide with sequence C-SIIYRMTNQKIRMD, from the C Terminus of the protein sequence according to NP_005756.2.
Sequence:	SIIYRMTNQK IRMD
Isotype:	IgG
Cross-Reactivity:	Human, Rat
Purification:	Purified from goat serum by ammonium sulphate precipitation followed by antigen affinity chromatography using the immunizing peptide.
Grade:	Verified

## Target Details

---

Target:	ATP6AP2
Alternative Name:	ATP6AP2 ( <a href="#">ATP6AP2 Products</a> )
Background:	ATP6AP2, ATP6IP2, ATPase, H <sup>+</sup> transporting, lysosomal interacting protein 2, M8-9, APT6M8-9, ATP6M8-9, renin receptor, V-ATPase M8.9 subunit, ATPase membrane sector associated protein M8-9, vacuolar ATP synthase membrane sector associated protein M8-9, ATP
Gene ID:	10159, 70495
NCBI Accession:	<a href="#">NP_005756</a>
Pathways:	<a href="#">ACE Inhibitor Pathway</a> , <a href="#">Peptide Hormone Metabolism</a> , <a href="#">Regulation of Systemic Arterial Blood Pressure by Hormones</a>

## Application Details

---

Application Notes:	Western Blot: Approx 38-39 kDa band observed in Human Cerebellum and in Human and Rat Heart lysates (calculated MW of 39.0 kDa according to Human NP_005756.2 and Rat NP_001007092.1). Recommended concentration 0.3-1 µg/mL. Primary incubation 1 hour at room t Peptide ELISA: antibody detection limit dilution 1:8000.
Comment:	<b>Flow Cytometry:</b> Flow cytometric analysis of HeLa cells.. Recommended concentration: 10ug/ml.
Restrictions:	For Research Use only

## Handling

---

Format:	Liquid
Concentration:	0.5 mg/mL
Buffer:	Supplied at 0.5 mg/mL in Tris saline, 0.02 % sodium azide, pH 7.3 with 0.5 % bovine serum albumin.
Preservative:	Sodium azide
Precaution of Use:	This product contains Sodium azide: a POISONOUS AND HAZARDOUS SUBSTANCE which should be handled by trained staff only.
Handling Advice:	Minimize freezing and thawing.
Storage:	-20 °C

## Handling

---

Storage Comment: Aliquot and store at -20°C, with minimal freeze/thawing. A working aliquot may be refrigerated at 4°C for a few weeks and still remain viable.

## Publications

---

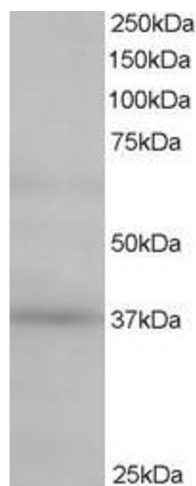
Product cited in: Delforce, Lumbers, Corbisier de Meaultsart, Wang, Proietto, Otton, Scurry, Verrills, Scott, Pringle: "Expression of renin-angiotensin system (RAS) components in endometrial cancer." in: **Endocrine connections**, Vol. 6, Issue 1, pp. 9-19, (2017) ([PubMed](#)).

Pringle, Zakar, Yates, Mitchell, Hirst, Lumbers: "Molecular evidence of a (pro)renin/ (pro)renin receptor system in human intrauterine tissues in pregnancy and its association with PGHS-2." in: **Journal of the renin-angiotensin-aldosterone system : JRAAS**, Vol. 12, Issue 3, pp. 304-10, (2011) ([PubMed](#)).

Zhu, Yoneda, Demura, Karashima, Usukura, Yamagishi, Takeda: "Effect of mineralocorticoid receptor blockade on the renal renin-angiotensin system in Dahl salt-sensitive hypertensive rats." in: **Journal of hypertension**, Vol. 27, Issue 4, pp. 800-5, (2009) ([PubMed](#)).

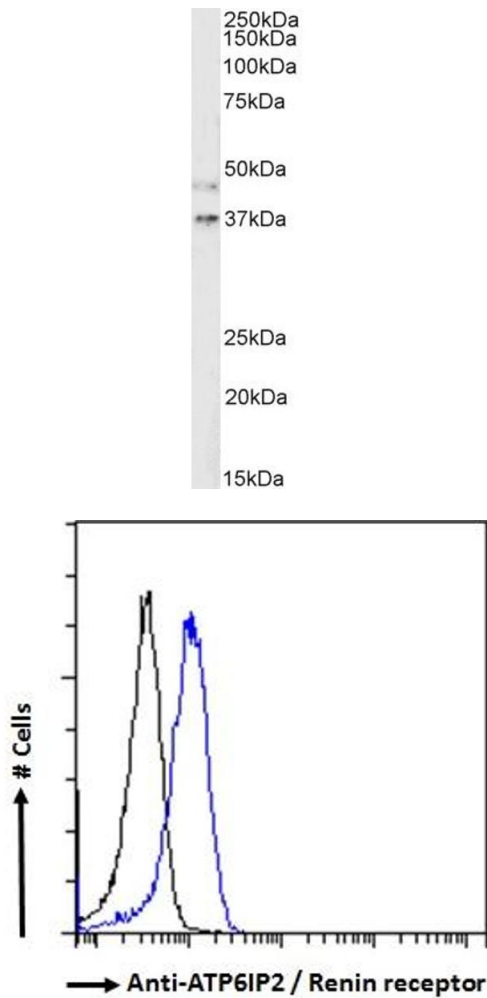
## Images

---



### Western Blotting

**Image 1.** ABIN185092 staining (0.5µg/ml) of Human Kidney lysate (RIPA buffer, 35µg total protein per lane). Primary incubated for 1 hour. Detected by western blot using chemiluminescence.



### Western Blotting

**Image 2.** ABIN185092 (2 $\mu$ g/ml) of Mouse Kidney lysate (RIPA buffer, 35 $\mu$ g total protein per lane). Detected by chemiluminescence.

### Flow Cytometry

**Image 3.** ABIN185092 Flow cytometric analysis of paraformaldehyde fixed HeLa cells (blue line), permeabilized with 0.5% Triton. Primary incubation 1hr (10 $\mu$ g/ml) followed by Alexa Fluor 488 secondary antibody (2 $\mu$ g/ml). IgG control: Unimmunized goat IgG (black line) fol