

Datasheet for ABIN185094
anti-ADAP1 antibody (C-Term)

2 Images

[Go to Product page](#)

Overview

Quantity:	100 µg
Target:	ADAP1
Binding Specificity:	C-Term
Reactivity:	Human, Mouse, Rat, Pig
Host:	Goat
Clonality:	Polyclonal
Conjugate:	This ADAP1 antibody is un-conjugated
Application:	Western Blotting (WB), ELISA

Product Details

Purpose:	CENTA1
Immunogen:	Peptide with sequence C-QEYAVEAHFKHKP, from the C Terminus of the protein sequence according to NP_006860.1.
Sequence:	QEYAVEAHFK HKP
Isotype:	IgG
Cross-Reactivity:	Dog, Human, Mouse, Pig, Rat
Purification:	Purified from goat serum by ammonium sulphate precipitation followed by antigen affinity chromatography using the immunizing peptide.
Grade:	Verified

Target Details

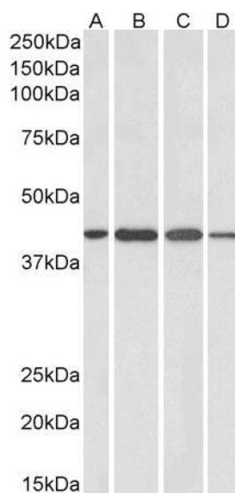
Target:	ADAP1
Alternative Name:	ADAP1 (ADAP1 Products)
Background:	ADAP1, CENTA1, centaurin, alpha 1, GCS1L, p42IP4, centaurin-alpha, ArfGAP with dual PH domains 1
Gene ID:	11033, 231821, 171097
NCBI Accession:	NP_006860

Application Details

Application Notes:	Western Blot: Approx 45 kDa band observed in Human Brain (Cerebellum), Mouse, Rat and Pig Brain lysates (calculated MW of 43.4 kDa according to Human NP_006860.1, Mouse NP_766311.2, Rat NP_598251.1 and Pig NP_999391.1). Recommended concentration: 1-3 µg/mL Peptide ELISA: antibody detection limit dilution 1:32000.
Restrictions:	For Research Use only

Handling

Format:	Liquid
Concentration:	0.5 mg/mL
Buffer:	Supplied at 0.5 mg/mL in Tris saline, 0.02 % sodium azide, pH 7.3 with 0.5 % bovine serum albumin.
Preservative:	Sodium azide
Precaution of Use:	This product contains Sodium azide: a POISONOUS AND HAZARDOUS SUBSTANCE which should be handled by trained staff only.
Handling Advice:	Minimize freezing and thawing.
Storage:	-20 °C
Storage Comment:	Aliquot and store at -20°C, with minimal freeze/thawing. A working aliquot may be refrigerated at 4°C for a few weeks and still remain viable.



Western Blotting

Image 1. ABIN185094 (1µg/ml) staining of Human Cerebellum (A), Mouse (B), Rat (C) and Pig (D) Brain lysates (35µg protein in RIPA buffer). Primary incubation was 1 hour. Detected by chemiluminescence.

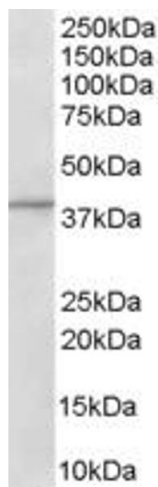


Image 2. ABIN185094 (1µg/ml) staining of Human Brain lysate (35µg protein in RIPA buffer). Primary incubation was 1 hour. Detected by chemiluminescence.