

Datasheet for ABIN185097

anti-Centaurin beta 2 antibody (C-Term)

4 Images

[Go to Product page](#)

Overview

Quantity:	100 µg
Target:	Centaurin beta 2 (ACAP2)
Binding Specificity:	C-Term
Reactivity:	Human, Mouse, Rat
Host:	Goat
Clonality:	Polyclonal
Conjugate:	This Centaurin beta 2 antibody is un-conjugated
Application:	Western Blotting (WB), ELISA, Immunohistochemistry (IHC)

Product Details

Purpose:	CENTB2 / ACAP2
Immunogen:	Peptide with sequence C-EKLNRFQQDSQKF, from the C Terminus of the protein sequence according to NP_036419.3.
Sequence:	EKLNRFQQDS QKF
Isotype:	IgG
Cross-Reactivity:	Dog, Human, Mouse, Pig, Rat
Purification:	Purified from goat serum by ammonium sulphate precipitation followed by antigen affinity chromatography using the immunizing peptide.
Grade:	Verified

Target Details

Target:	Centaurin beta 2 (ACAP2)
Alternative Name:	ACAP2 (ACAP2 Products)
Background:	ACAP2, CENTB2, centaurin, beta 2, CNT-B2, KIAA0041, centaurin beta2, Arf GAP with coiled coil, ANK repeat and PH domains 2, ArfGAP with coiled-coil, ankyrin repeat and PH domains 2
Gene ID:	23527, 78618
NCBI Accession:	NP_036419

Application Details

Application Notes:	<p>Immunohistochemistry: In paraffin embedded Human Lung shows strong staining of Type II pneumocytes. Recommended concentration, 5-10 µg/mL.</p> <p>Western Blot: Approx 90 kDa band observed in Mouse and Rat Lung lysates and in lysates of cell lines MOLT4 and NIH3T3 (calculated MW of 88.1 kDa according to Human NP_036419 and 87.2 kDa according to Mouse NP_084414.1 and Rat NP_001029178.1). Recommended c</p> <p>Peptide ELISA: antibody detection limit dilution 1:32000.</p>
Restrictions:	For Research Use only

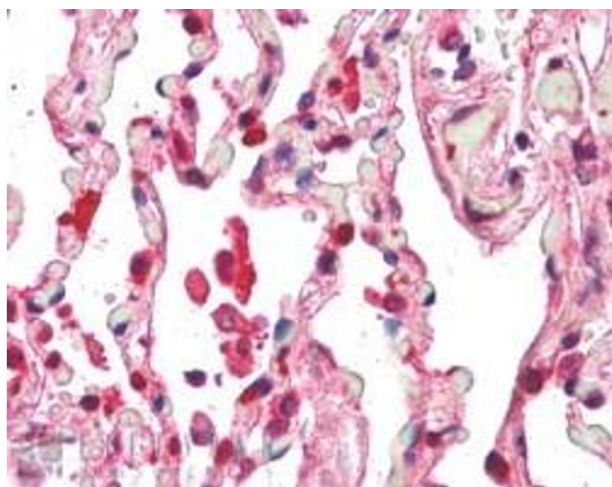
Handling

Format:	Liquid
Concentration:	0.5 mg/mL
Buffer:	Supplied at 0.5 mg/mL in Tris saline, 0.02 % sodium azide, pH 7.3 with 0.5 % bovine serum albumin.
Preservative:	Sodium azide
Precaution of Use:	This product contains Sodium azide: a POISONOUS AND HAZARDOUS SUBSTANCE which should be handled by trained staff only.
Handling Advice:	Minimize freezing and thawing.
Storage:	-20 °C
Storage Comment:	Aliquot and store at -20°C, with minimal freeze/thawing. A working aliquot may be refrigerated at 4°C for a few weeks and still remain viable.



Western Blotting

Image 1. ABIN185097 (0.3µg/ml) staining of NIH3T3 cell lysate (35µg protein in RIPA buffer). Primary incubation was 1 hour. Detected by chemiluminescence.



Immunohistochemistry

Image 2. ABIN185097 (5µg/ml) staining of paraffin embedded Human Lung. Steamed antigen retrieval with citrate buffer pH 6, AP-staining.



Western Blotting

Image 3. ABIN185097 (1µg/ml) staining of MOLT4 lysate (35µg protein in RIPA buffer). Primary incubation was 1 hour. Detected by chemiluminescence.

Please check the [product details page](#) for more images. Overall 4 images are available for ABIN185097.