



[Go to Product page](#)

Datasheet for ABIN185109
anti-GRAF antibody (C-Term)

2 Images

Overview

Quantity:	100 µg
Target:	GRAF (ARHGAP26)
Binding Specificity:	C-Term
Reactivity:	Human
Host:	Goat
Clonality:	Polyclonal
Conjugate:	This GRAF antibody is un-conjugated
Application:	Western Blotting (WB), ELISA, Immunohistochemistry (IHC)

Product Details

Purpose:	GRAF / ARHGAP26
Immunogen:	Peptide with sequence C-KTGLIPENYVEFL, from the C Terminus of the protein sequence according to NP_055886.1, NP_001129080.1.
Sequence:	KTGLIPENYV EFL
Isotype:	IgG
Specificity:	This antibody is expected to recognise both reported isoforms.
Cross-Reactivity:	Cow, Dog, Human, Mouse, Rat
Purification:	Purified from goat serum by ammonium sulphate precipitation followed by antigen affinity chromatography using the immunizing peptide.
Grade:	Verified

Target Details

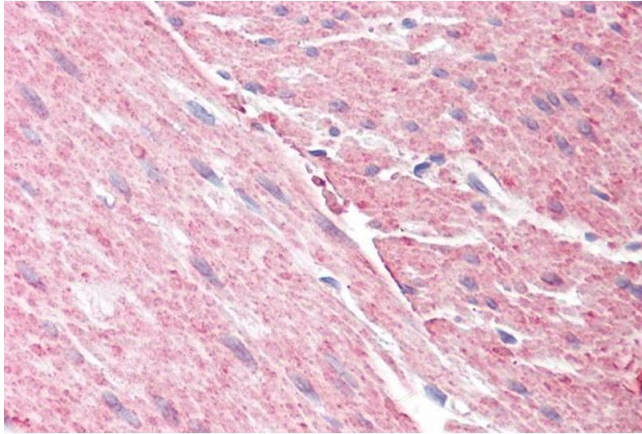
Target:	GRAF (ARHGAP26)
Alternative Name:	ARHGAP26 (ARHGAP26 Products)
Background:	ARHGAP26, GRAF, Rho GTPase activating protein 26 , KIAA0621, FLJ42530, OPHN1L, OPHN1L1, GTPase regulator associated with FAK, GTPase regulator associated with focal adhesion kinase pp125(FAK), GTPase regulator associated with the focal adhesion kinase pp1
Gene ID:	23092, 71302
NCBI Accession:	NP_055886 , NP_001129080

Application Details

Application Notes:	Immunohistochemistry: Paraffin embedded Human Colon. Recommended concentration: 3.75 µg/mL. Western Blot: Approx 90 kDa band observed in Human Heart lysates (calculated MW of 92.2 kDa according to NP_055886.1). Recommended concentration: 0.3-1 µg/mL. An additional strong band of unknown identity was also consistently observed at 16 kDa. This band Peptide ELISA: antibody detection limit dilution 1:64000.
Restrictions:	For Research Use only

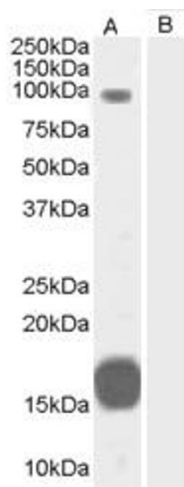
Handling

Format:	Liquid
Concentration:	0.5 mg/mL
Buffer:	Supplied at 0.5 mg/mL in Tris saline, 0.02 % sodium azide, pH 7.3 with 0.5 % bovine serum albumin.
Preservative:	Sodium azide
Precaution of Use:	This product contains Sodium azide: a POISONOUS AND HAZARDOUS SUBSTANCE which should be handled by trained staff only.
Handling Advice:	Minimize freezing and thawing.
Storage:	-20 °C
Storage Comment:	Aliquot and store at -20°C, with minimal freeze/thawing. A working aliquot may be refrigerated at 4°C for a few weeks and still remain viable.



Immunohistochemistry

Image 1. ABIN185109 (3.75µg/ml) staining of paraffin embedded Human Colon. Steamed antigen retrieval with citrate buffer pH 6, AP-staining.



Western Blotting

Image 2. ABIN185109 (0.3µg/ml) staining of Human Heart lysate (35µg protein in RIPA buffer) with (B) and without (A) blocking with the immunising peptide. Primary incubation was 1 hour. Detected by chemiluminescence.