

Datasheet for ABIN185110  
**anti-KALRN antibody (C-Term)**

## 5 Images

[Go to Product page](#)

## Overview

Quantity:	100 µg
Target:	KALRN
Binding Specificity:	C-Term
Reactivity:	Human
Host:	Goat
Clonality:	Polyclonal
Conjugate:	This KALRN antibody is un-conjugated
Application:	ELISA, Immunohistochemistry (IHC), Flow Cytometry (FACS)

## Product Details

Purpose:	Kalirin
Immunogen:	Peptide with sequence C-RWHLGPGDPFSTYV, from the C Terminus of the protein sequence according to NP_003938.1.
Sequence:	RWHLGPGDPF STYV
Isotype:	IgG
Specificity:	This antibody is expected to recognise NP_003938.1,(isoform 2),NP_001309918..1 (9isoform 5), NP_001309919.1,(isoform 6), NP_001309920.1 (isoform 7), and NP_001309921.1 (isoform 8).
Cross-Reactivity:	Human, Mouse, Rat
Purification:	Purified from goat serum by ammonium sulphate precipitation followed by antigen affinity

## Product Details

chromatography using the immunizing peptide.

Grade: Verified

## Target Details

Target: KALRN

Alternative Name: KALRN ([KALRN Products](#))

Background: KALRN, kalirin, RhoGEF kinase, FLJ16443, HAPIP, TRAD, duo, huntingtin-associated protein interacting protein (duo), serine/threonine kinase with Dbp- and pleckstrin homology domains, hCG\_2022551, DUET, DUO, FLJ12332, FLJ18196, FLJ18623,

Molecular Weight: 192kDa

Gene ID: 8997, 545156, 84009

NCBI Accession: [NP\\_003938](#)

Pathways: [Neurotrophin Signaling Pathway](#)

## Application Details

Application Notes: Immunohistochemistry: Paraffin embedded Human Brain (Cortex). Recommended concentration: 4-5 µg/mL.  
Western Blot: Preliminary testing showed a band at approx.. 200 kDa in Rat Brain lysate, after 0.1 µg/mL antibody staining (calculated Mwt. of 192.5 kDa according to XP\_038944588.1).  
Primary incubation 1 hour at room temperature.  
Peptide ELISA: antibody detection limit dilution 1:16000.

Comment: **Flow Cytometry:** Flow cytometric analysis of HepG2 cells. Recommended concentration: 10ug/ml.

Restrictions: For Research Use only

## Handling

Format: Liquid

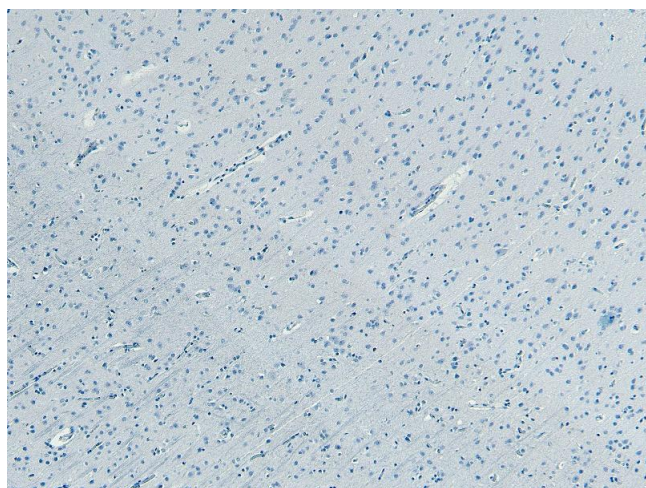
Concentration: 0.5 mg/mL

Buffer: Supplied at 0.5 mg/mL in Tris saline, 0.02 % sodium azide, pH 7.3 with 0.5 % bovine serum albumin.

## Handling

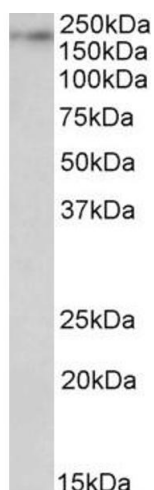
Preservative:	Sodium azide
Precaution of Use:	This product contains Sodium azide: a POISONOUS AND HAZARDOUS SUBSTANCE which should be handled by trained staff only.
Handling Advice:	Minimize freezing and thawing.
Storage:	-20 °C
Storage Comment:	Aliquot and store at -20°C, with minimal freeze/thawing. A working aliquot may be refrigerated at 4°C for a few weeks and still remain viable.

## Images



### Immunohistochemistry

**Image 1.** ABIN185110 Negative Control showing staining of paraffin embedded Human Cortex, with no primary antibody.



### Western Blotting

**Image 2.** ABIN185110 (0.1µg/ml) staining of Rat Brain lysate (35µg protein in RIPA buffer). Detected by chemiluminescence.



**Image 3.** ABIN185110 (2µg/ml) staining of Mouse Brain lysate (35µg protein in RIPA buffer). Primary incubation was 1 hour. Detected by chemiluminescence.

Please check the [product details page](#) for more images. Overall 5 images are available for ABIN185110.