

Datasheet for ABIN185115  
**anti-OSBPL1A antibody (C-Term)**

## 3 Images

[Go to Product page](#)

## Overview

Quantity:	100 µg
Target:	OSBPL1A
Binding Specificity:	C-Term
Reactivity:	Human
Host:	Goat
Clonality:	Polyclonal
Conjugate:	This OSBPL1A antibody is un-conjugated
Application:	Western Blotting (WB), ELISA, Immunohistochemistry (IHC)

## Product Details

Purpose:	ORP1
Immunogen:	Peptide with sequence C-YWDRNYFNLPDIY, from the C Terminus of the protein sequence according to NP_060500.3, NP_542164.2.
Sequence:	YWDRNYFNLP DIY
Isotype:	IgG
Specificity:	This antibody is expected to recognise both reported human isoforms of this protein.
Cross-Reactivity:	Cow, Dog, Human, Mouse, Rat
Purification:	Purified from goat serum by ammonium sulphate precipitation followed by antigen affinity chromatography using the immunizing peptide.
Grade:	Verified

## Target Details

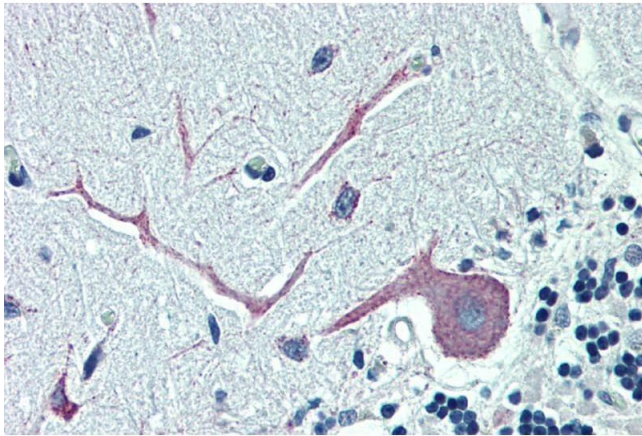
Target:	OSBPL1A
Alternative Name:	OSBPL1A ( <a href="#">OSBPL1A Products</a> )
Background:	OSBPL1A, ORP1, OSBPL1B, FLJ10217, oxysterol binding protein-like 1A, OSBP-related protein 1, oxysterol-binding protein-like 1B, oxysterol-binding protein-related protein 1, ORP-1, oxysterol-binding protein-like 1A,
Gene ID:	114876, 64291, 259221
NCBI Accession:	<a href="#">NP_060500</a> , <a href="#">NP_542164</a>

## Application Details

Application Notes:	Immunohistochemistry: Paraffin embedded Human Brain (Cerebellum) and Human Skeletal Muscle. Recommended concentration: 5 µg/mL. Western Blot: Approx 48 kDa band observed in Human Muscle lysate (predicted MW of 50 kDa according to NP_060500.3). Recommended for use at 0.5-2 µg/mL. Peptide ELISA: antibody detection limit dilution 1:16000.
Restrictions:	For Research Use only

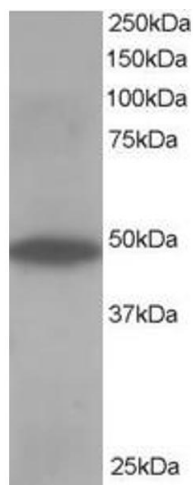
## Handling

Format:	Liquid
Concentration:	0.5 mg/mL
Buffer:	Supplied at 0.5 mg/mL in Tris saline, 0.02 % sodium azide, pH 7.3 with 0.5 % bovine serum albumin.
Preservative:	Sodium azide
Precaution of Use:	This product contains Sodium azide: a POISONOUS AND HAZARDOUS SUBSTANCE which should be handled by trained staff only.
Handling Advice:	Minimize freezing and thawing.
Storage:	-20 °C
Storage Comment:	Aliquot and store at -20°C, with minimal freeze/thawing. A working aliquot may be refrigerated at 4°C for a few weeks and still remain viable.



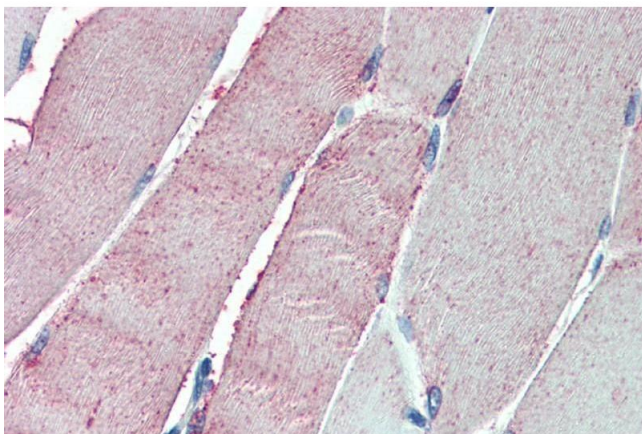
#### Immunohistochemistry

**Image 1.** ABIN185115 (5µg/ml) staining of paraffin embedded Human Cerebellum. Steamed antigen retrieval with citrate buffer pH 6, AP-staining.



#### Western Blotting

**Image 2.** ABIN185115 staining (0.5µg/ml) of Human Muscle lysate (RIPA buffer, 35µg total protein per lane). Primary incubated for 1 hour. Detected by chemiluminescence.



#### Immunohistochemistry

**Image 3.** ABIN185115 (5µg/ml) staining of paraffin embedded Human Skeletal Muscle. Steamed antigen retrieval with citrate buffer pH 6, AP-staining.