

Datasheet for ABIN185121
anti-OSBPL11 antibody (C-Term)[Go to Product page](#)

1 Image

Overview

Quantity:	100 µg
Target:	OSBPL11
Binding Specificity:	C-Term
Reactivity:	Human
Host:	Goat
Clonality:	Polyclonal
Conjugate:	This OSBPL11 antibody is un-conjugated
Application:	Western Blotting (WB), ELISA

Product Details

Purpose:	ORP11 / OSBPL11
Immunogen:	Peptide with sequence C-KPLWKIIPTTQPAE, from the C Terminus of the protein sequence according to NP_073613.2.
Sequence:	KPLWKIIPTT QPAE
Isotype:	IgG
Cross-Reactivity:	Cow, Dog, Human, Mouse, Rat
Purification:	Purified from goat serum by ammonium sulphate precipitation followed by antigen affinity chromatography using the immunizing peptide.
Grade:	Verified

Target Details

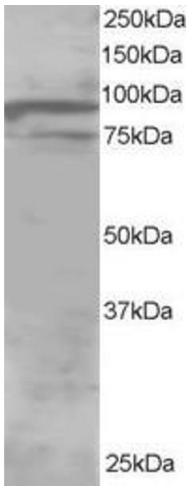
Target:	OSBPL11
Alternative Name:	OSBPL11 (OSBPL11 Products)
Background:	OSBPL11, ORP11, ORP-11, OSBP12, FLJ13012, FLJ13164, TCCCIA00292, oxysterol binding protein-like 11, OSBP-related protein 11, oxysterol-binding protein-related protein 11
Gene ID:	114885
NCBI Accession:	NP_073613

Application Details

Application Notes:	Western Blot: Approx 85-90 kDa band observed in Human Brain lysates (predicted MWs of 86 kDa according to NP_073613). A minor band of unknown identity was also consistently observed at 75 kDa. Recommended for use at 1-2 µg/mL. Peptide ELISA: antibody detection limit dilution 1:16000.
Restrictions:	For Research Use only

Handling

Format:	Liquid
Concentration:	0.5 mg/mL
Buffer:	Supplied at 0.5 mg/mL in Tris saline, 0.02 % sodium azide, pH 7.3 with 0.5 % bovine serum albumin.
Preservative:	Sodium azide
Precaution of Use:	This product contains Sodium azide: a POISONOUS AND HAZARDOUS SUBSTANCE which should be handled by trained staff only.
Handling Advice:	Minimize freezing and thawing.
Storage:	-20 °C
Storage Comment:	Aliquot and store at -20°C, with minimal freeze/thawing. A working aliquot may be refrigerated at 4°C for a few weeks and still remain viable.



Western Blotting

Image 1. ABIN185121 staining (1µg/ml) of Human Brain lysate (RIPA buffer, 30µg total protein per lane). Primary incubated for 1 hour. Detected by western blot using chemiluminescence.