

Datasheet for ABIN185122
anti-CYP7B1 antibody (C-Term)[Go to Product page](#)

1 Image

Overview

Quantity:	100 µg
Target:	CYP7B1
Binding Specificity:	C-Term
Reactivity:	Human
Host:	Goat
Clonality:	Polyclonal
Conjugate:	This CYP7B1 antibody is un-conjugated
Application:	ELISA, Immunohistochemistry (IHC)

Product Details

Purpose:	CYP7B1
Immunogen:	Peptide with sequence C-YPDSDVLFYKVKS, from the C Terminus of the protein sequence according to NP_004811.1.
Sequence:	YPDSDVLFY KVKS
Isotype:	IgG
Cross-Reactivity:	Cow, Human
Purification:	Purified from goat serum by ammonium sulphate precipitation followed by antigen affinity chromatography using the immunizing peptide.
Grade:	Verified

Target Details

Target:	CYP7B1
Alternative Name:	CYP7B1 (CYP7B1 Products)
Background:	CYP7B1, CP7B, cytochrome P450, family 7, subfamily B, polypeptide 1, oxysterol 7alpha-hydroxylase, cytochrome P450, subfamily VIIB (oxysterol 7 alpha-hydroxylase), polypeptide 1, CBAS3, SPG5A
Gene ID:	9420
NCBI Accession:	NP_004811
Pathways:	Intracellular Steroid Hormone Receptor Signaling Pathway , Steroid Hormone Biosynthesis , Regulation of Intracellular Steroid Hormone Receptor Signaling

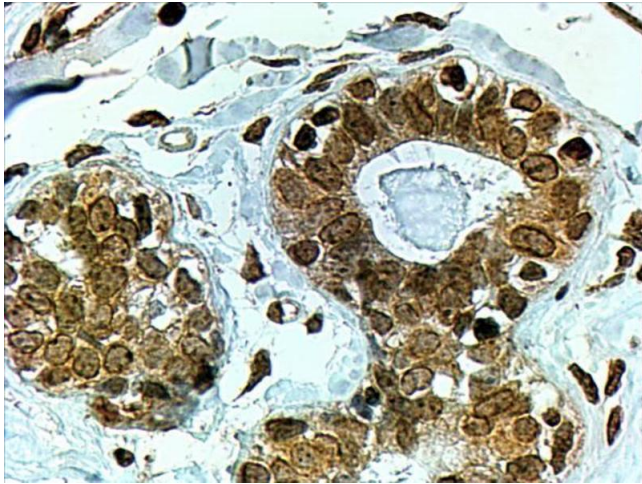
Application Details

Application Notes:	<p>Immunohistochemistry: In paraffin embedded Human Breast shows textured cytoplasm staining in ductal epithelial cells. Recommended concentration, 3-6 µg/mL.</p> <p>Western Blot: Preliminary experiments in Human Liver, Kidney and Prostate lysates gave no specific signal but low background (at antibody concentration up to 1 µg/mL). We would appreciate any feedback from people in the field - have any results been reported</p> <p>Peptide ELISA: antibody detection limit dilution 1:128000.</p>
Restrictions:	For Research Use only

Handling

Format:	Liquid
Concentration:	0.5 mg/mL
Buffer:	Supplied at 0.5 mg/mL in Tris saline, 0.02 % sodium azide, pH 7.3 with 0.5 % bovine serum albumin.
Preservative:	Sodium azide
Precaution of Use:	This product contains Sodium azide: a POISONOUS AND HAZARDOUS SUBSTANCE which should be handled by trained staff only.
Handling Advice:	Minimize freezing and thawing.
Storage:	-20 °C
Storage Comment:	Aliquot and store at -20°C, with minimal freeze/thawing. A working aliquot may be refrigerated

at 4°C for a few weeks and still remain viable.



Immunohistochemistry

Image 1. ABIN185122 (4µg/ml) staining of paraffin embedded Human Breast. Steamed antigen retrieval with citrate buffer pH 6, HRP-staining.