

Datasheet for ABIN1851268  
**anti-MARCH4 antibody (C-Term)**

## 2 Images

[Go to Product page](#)

## Overview

Quantity:	100 µL
Target:	MARCH4
Binding Specificity:	C-Term
Reactivity:	Human, Mouse
Host:	Rabbit
Clonality:	Polyclonal
Conjugate:	This MARCH4 antibody is un-conjugated
Application:	ELISA, Immunohistochemistry (IHC)

## Product Details

Immunogen:	The antiserum was produced against synthesized peptide derived from C-terminal of human MARCH4.
Specificity:	Rabbit polyclonal antibody against 38047 protein.
Purification:	The antibody was affinity-purified from rabbit antiserum by affinity-chromatography using epitope-specific immunogen

## Target Details

Target:	MARCH4
Alternative Name:	MARCH4 ( <a href="#">MARCH4 Products</a> )
UniProt:	<a href="#">Q9P2E8</a>

# Application Details

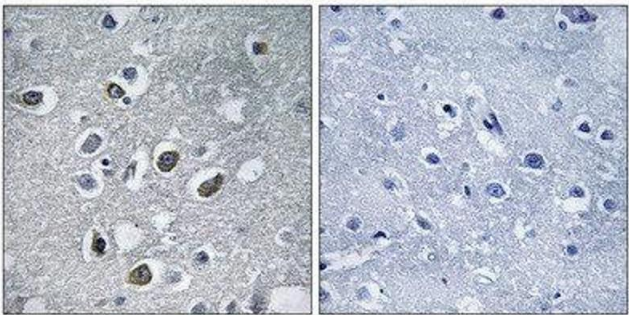
Restrictions: For Research Use only

## Handling

Storage: -20 °C

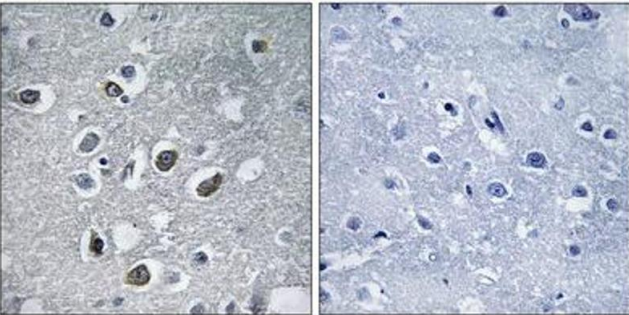
Storage Comment: Aliquot and store at -20 °C. Avoid repeated freeze/thaw cycles.

## Images



### Immunohistochemistry

Image 1.



### Immunohistochemistry

Image 2. Immunohistochemistry analysis of paraffin-embedded human brain tissue using MARCH4 antibody.