

Datasheet for ABIN185127
anti-Pleckstrin antibody (C-Term)

4 Images

[Go to Product page](#)

Overview

Quantity:	100 µg
Target:	Pleckstrin (PLEK)
Binding Specificity:	C-Term
Reactivity:	Human
Host:	Goat
Clonality:	Polyclonal
Conjugate:	This Pleckstrin antibody is un-conjugated
Application:	Western Blotting (WB), Immunohistochemistry (IHC), ELISA, Flow Cytometry (FACS), Immunofluorescence (IF)

Product Details

Purpose:	Pleckstrin
Immunogen:	C-EWIKAIQMASRTGK
Sequence:	EWIKAIQMAS RTGK
Isotype:	IgG
Cross-Reactivity:	Human
Purification:	Purified from goat serum by ammonium sulphate precipitation followed by antigen affinity chromatography using the immunizing peptide.
Grade:	Verified

Target Details

Target:	Pleckstrin (PLEK)
Alternative Name:	PLEK (PLEK Products)
Background:	PLEK, pleckstrin, P47, p47, FLJ27168
Gene ID:	5341
NCBI Accession:	NP_002655
Pathways:	Inositol Metabolic Process , Regulation of G-Protein Coupled Receptor Protein Signaling , Regulation of Cell Size , Regulation of Carbohydrate Metabolic Process

Application Details

Application Notes:	Immunohistochemistry: Paraffin embedded Human Vessel (platelets) and Spleen. Recommended concentration: 3.75 µg/mL. Western Blot: Approx 40-45 kDa band observed in Human Parathyroid gland lysates and also in preliminary testing of Mouse Spleen lysates and lysates of cell line U937 (calculated MW of 40.1 kDa according to Human NP_002655.2). Recommended concentration: 0.0 Peptide ELISA: antibody detection limit dilution 1:16000.
Comment:	Immunofluorescence: Strong expression of the protein seen in the cytoplasm/ membranes and nuclei of HeLa cells. Recommended concentration: 10µg/ml. Flow Cytometry: Flow cytometric analysis of HeLa cells. Recommended co
Restrictions:	For Research Use only

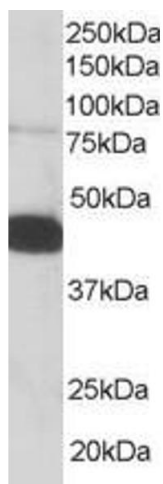
Handling

Format:	Liquid
Concentration:	0.5 mg/mL
Buffer:	Supplied at 0.5 mg/mL in Tris saline, 0.02 % sodium azide, pH 7.3 with 0.5 % bovine serum albumin.
Preservative:	Sodium azide
Precaution of Use:	This product contains Sodium azide: a POISONOUS AND HAZARDOUS SUBSTANCE which should be handled by trained staff only.
Handling Advice:	Minimize freezing and thawing.
Storage:	-20 °C

Handling

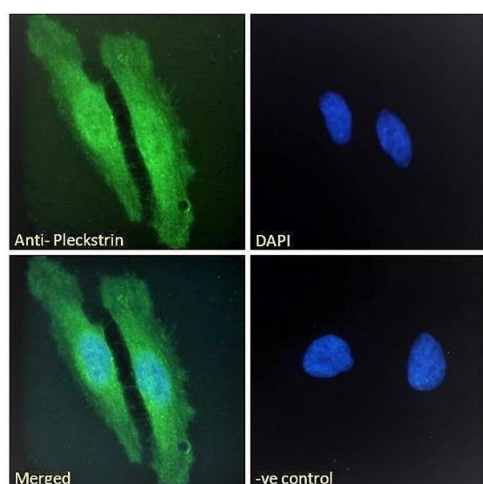
Storage Comment: Aliquot and store at -20°C, with minimal freeze/thawing. A working aliquot may be refrigerated at 4°C for a few weeks and still remain viable.

Images



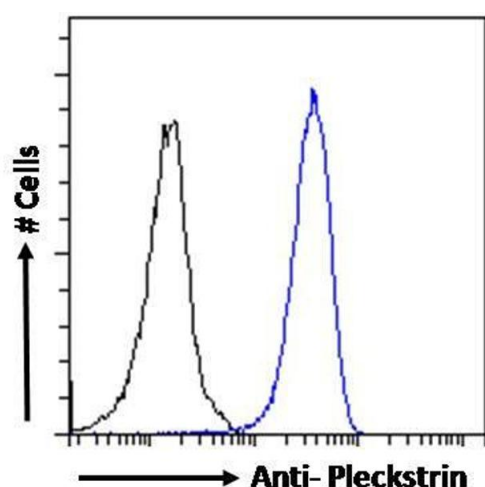
Western Blotting

Image 1. ABIN185127 staining (0.05µg/ml) of Human PBMC lysate (RIPA buffer, 35µg total protein per lane). Primary incubated for 1 hour. Detected by western blot using chemiluminescence.



Immunofluorescence

Image 2. ABIN185127 Immunofluorescence analysis of paraformaldehyde fixed HeLa cells, permeabilized with 0.15% Triton. Primary incubation 1hr (10ug/ml) followed by Alexa Fluor 488 secondary antibody (2ug/ml), showing cytoplasmic/membrane and nuclear staining. The nuclear stain is DAPI (blue). Negative control: Unimmunized goat IgG (10ug/ml) followed by Alexa Fluor 488 secondary antibody (2ug/ml).



Flow Cytometry

Image 3. ABIN185127 Flow cytometric analysis of paraformaldehyde fixed HeLa cells (blue line), permeabilized with 0.5% Triton. Primary incubation 1hr (10ug/ml) followed by Alexa Fluor 488 secondary antibody (1ug/ml). IgG control: Unimmunized goat IgG (black line) followed by Alexa Fluor 488 secondary antibody.

Please check the [product details page](#) for more images. Overall 4 images are available for ABIN185127.