

Datasheet for ABIN185138
anti-GIPC1 antibody (C-Term)[Go to Product page](#)

2 Images

Overview

Quantity:	100 µg
Target:	GIPC1
Binding Specificity:	C-Term
Reactivity:	Human
Host:	Goat
Clonality:	Polyclonal
Conjugate:	This GIPC1 antibody is un-conjugated
Application:	Western Blotting (WB), ELISA

Product Details

Purpose:	GIPC1 / NIP
Immunogen:	Peptide with sequence C-GAIGDAKVGRY, from the C Terminus of the protein sequence according to NP_005707.1, NP_974197.1, NP_974199.1, NP_974196.1, NP_974198.1, NP_974223.1.
Sequence:	GAIGDAKVGR Y
Isotype:	IgG
Specificity:	This antibody is expected to recognize both isoform 1 (NP_005707.1, NP_974197.1 and NP_974199.1) and isoform 2 (NP_974196.1, NP_974198.1 and NP_974223.1).
Cross-Reactivity:	Cow, Human, Mouse, Rat
Purification:	Purified from goat serum by ammonium sulphate precipitation followed by antigen affinity

Product Details

chromatography using the immunizing peptide.

Grade: Verified

Target Details

Target: GIPC1

Alternative Name: GIPC1 ([GIPC1 Products](#))

Background: GIPC1, NIP, GIPC PDZ domain containing family, member 1, C19orf3, GIPC, GLUT1CBP, Hs.6454, IIP-1, MGC15889, MGC3774, RGS19IP1, SEMCAP, SYNECTIIN, TIP-2, GLUT1 C-terminal binding protein, IGF-1 receptor interacting protein 1, regulator of G-protein signal

Gene ID: 10755, 67903, 83823

NCBI Accession: [NP_005707](#), [NP_974197](#), [NP_974199](#), [NP_974196](#), [NP_974198](#), [NP_974223](#)

Pathways: [Dicarboxylic Acid Transport](#)

Application Details

Application Notes: Western Blot: Approx 38 kDa and strong 23-24 kDa bands observed in lysates of cell line HeLa, and approx 24 kDa also observed in Human Pancreas, Kidney and Muscle lysates (calculated MW of 36.0 kDa according to NP_005707.1, NP_974197.1 and NP_974199.1 and 26 Peptide ELISA: antibody detection limit dilution 1:128000.

Restrictions: For Research Use only

Handling

Format: Liquid

Concentration: 0.5 mg/mL

Buffer: Supplied at 0.5 mg/mL in Tris saline, 0.02 % sodium azide, pH 7.3 with 0.5 % bovine serum albumin.

Preservative: Sodium azide

Precaution of Use: This product contains Sodium azide: a POISONOUS AND HAZARDOUS SUBSTANCE which should be handled by trained staff only.

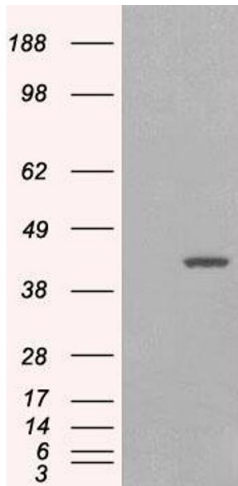
Handling Advice: Minimize freezing and thawing.

Storage: -20 °C

Handling

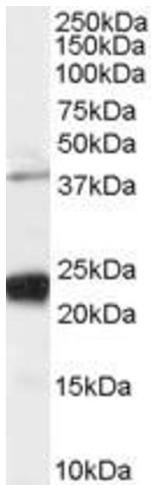
Storage Comment: Aliquot and store at -20°C, with minimal freeze/thawing. A working aliquot may be refrigerated at 4°C for a few weeks and still remain viable.

Images



Western Blotting

Image 1. HEK293 overexpressing GIPC1 isoform 1 (ABIN5349711) and probed with ABIN185138 (mock transfection in first lane).



Western Blotting

Image 2. ABIN185138 staining (0.03µg/ml) of Human HeLa cell lysate (RIPA buffer, 35µg total protein per lane). Primary incubated for 1 hour. Detected by chemiluminescence.