

Datasheet for ABIN185139
anti-PATJ antibody (N-Term)

2 Images

[Go to Product page](#)

Overview

Quantity:	100 µg
Target:	PATJ (INADL)
Binding Specificity:	N-Term
Reactivity:	Human
Host:	Goat
Clonality:	Polyclonal
Conjugate:	This PATJ antibody is un-conjugated
Application:	ELISA, Flow Cytometry (FACS), Immunofluorescence (IF)

Product Details

Purpose:	INADL / PATJ
Immunogen:	Peptide with sequence PENPATDKLQVLQ-C, from the N Terminus of the protein sequence according to NP_795352.2.
Sequence:	PENPATDKLQ VLQ
Isotype:	IgG
Cross-Reactivity:	Cow, Dog, Human, Pig
Purification:	Purified from goat serum by ammonium sulphate precipitation followed by antigen affinity chromatography using the immunizing peptide.
Grade:	Verified

Target Details

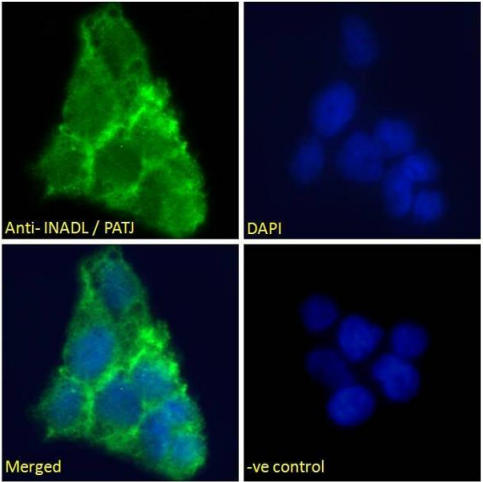
Target:	PATJ (INADL)
Alternative Name:	INADL (INADL Products)
Background:	INADL, PATJ, PDZ domain protein (Drosophila inaD-like), protein associated to tight junctions, InaD-like (Drosophila), RP4-537K17.1, Cipp, FLJ26982, InaD-like, InaD-like, PALS1-associated tight junction protein, PDZ domain protein, channel-interacting PDZ
Gene ID:	10207
NCBI Accession:	NP_795352 , NP_001337074

Application Details

Application Notes:	Peptide ELISA: antibody detection limit dilution 1:64000.
Comment:	Immunofluorescence: Strong expression of the protein seen in A431 cells. Recommended concentration: 10µg/ml. Flow Cytometry: Flow cytometric analysis of A431 cells. Recommended concentration: 10ug/ml.
Restrictions:	For Research Use only

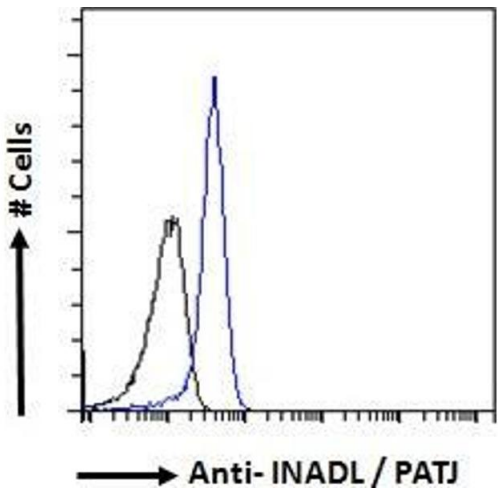
Handling

Format:	Liquid
Concentration:	0.5 mg/mL
Buffer:	Supplied at 0.5 mg/mL in Tris saline, 0.02 % sodium azide, pH 7.3 with 0.5 % bovine serum albumin.
Preservative:	Sodium azide
Precaution of Use:	This product contains Sodium azide: a POISONOUS AND HAZARDOUS SUBSTANCE which should be handled by trained staff only.
Handling Advice:	Minimize freezing and thawing.
Storage:	-20 °C
Storage Comment:	Aliquot and store at -20°C, with minimal freeze/thawing. A working aliquot may be refrigerated at 4°C for a few weeks and still remain viable.



Immunofluorescence

Image 1. ABIN185139 Immunofluorescence analysis of paraformaldehyde fixed A431 cells, permeabilized with 0.15% Triton. Primary incubation 1hr (10ug/ml) followed by Alexa Fluor 488 secondary antibody (2ug/ml), showing junctional staining. The nuclear stain is DAPI (blue). Negative control: Unimmunized goat IgG (10ug/ml) followed by Alexa Fluor 488 secondary antibody (2ug/ml).



Flow Cytometry

Image 2. ABIN185139 Flow cytometric analysis of paraformaldehyde fixed A431 cells (blue line), permeabilized with 0.5% Triton. Primary incubation 1hr (10ug/ml) followed by Alexa Fluor 488 secondary antibody (1ug/ml). IgG control: Unimmunized goat IgG (black line) followed by Alexa Fluor 488 secondary antibody.