



[Go to Product page](#)

Datasheet for ABIN185143
anti-POLL antibody (C-Term)

2 Images

Overview

Quantity:	100 µg
Target:	POLL
Binding Specificity:	C-Term
Reactivity:	Human
Host:	Goat
Clonality:	Polyclonal
Conjugate:	This POLL antibody is un-conjugated
Application:	Western Blotting (WB), ELISA

Product Details

Purpose:	POLL / POLkappa
Immunogen:	Peptide with sequence C-LGLPYREPAERDW, from the C Terminus of the protein sequence according to NP_037406.1.
Sequence:	LGLPYREPAE RDW
Isotype:	IgG
Specificity:	It has been brought to our attention that this product may crossreact with Pol beta (NP_002681), an evolutionarily related polymerase with a predicted size of 39 kDa. The overall % of identity is not very high (about 32 % in the core) but considering only
Cross-Reactivity:	Human
Purification:	Purified from goat serum by ammonium sulphate precipitation followed by antigen affinity

Product Details

chromatography using the immunizing peptide.

Grade: Verified

Target Details

Target: POLL

Alternative Name: POLL ([POLL Products](#))

Background: POLL, BETA-N, POL-KAPPA, polymerase (DNA directed), lambda, polymerase (DNA-directed), lambda, DNA polymerase kappa (DNA polymerase beta-N), RP11-529I10.1, BETAN, FLJ46002, POLKAPPA, DNA polymerase beta-2, DNA polymerase kappa (DNA polymerase beta-N), DNA

Gene ID: 27343, 56626

NCBI Accession: [NP_037406](#)

Pathways: [DNA Damage Repair](#), [Production of Molecular Mediator of Immune Response](#)

Application Details

Application Notes: Western Blot: Approx 60 kDa band observed in cell lysates of A549 and approx 60-70 kDa in cell lysates of HepG2 (calculated MW of 63.5 kDa according to Human NP_037406.1).
Recommended concentration: 0.5-1 µg/mL.
Peptide ELISA: antibody detection limit dilution 1:32000.

Restrictions: For Research Use only

Handling

Format: Liquid

Concentration: 0.5 mg/mL

Buffer: Supplied at 0.5 mg/mL in Tris saline, 0.02 % sodium azide, pH 7.3 with 0.5 % bovine serum albumin.

Preservative: Sodium azide

Precaution of Use: This product contains Sodium azide: a POISONOUS AND HAZARDOUS SUBSTANCE which should be handled by trained staff only.

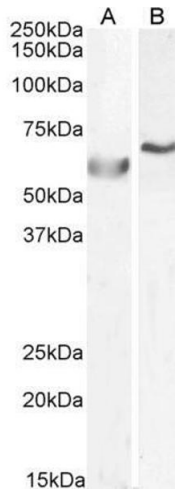
Handling Advice: Minimize freezing and thawing.

Storage: -20 °C

Handling

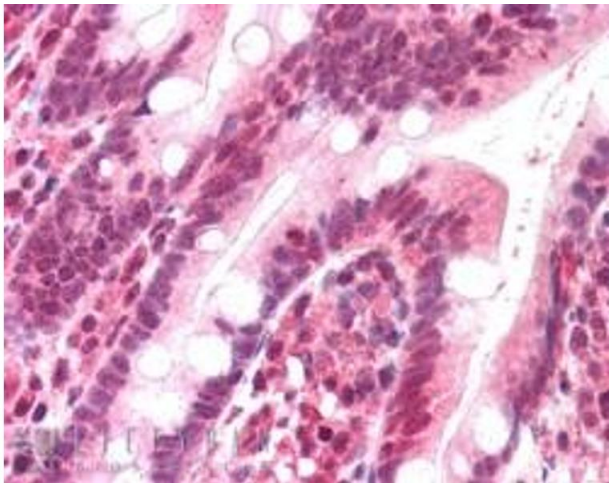
Storage Comment: Aliquot and store at -20°C , with minimal freeze/thawing. A working aliquot may be refrigerated at 4°C for a few weeks and still remain viable.

Images



Western Blotting

Image 1. ABIN185143 ($0.5\mu\text{g}/\text{ml}$) staining of A549 (A) and ($1\mu\text{g}/\text{ul}$) HepG2 (B) cell lysate ($35\mu\text{g}$ protein in RIPA buffer). Primary incubation was 1 hour. Detected by chemiluminescence.



Immunohistochemistry

Image 2. ABIN185143 ($5\mu\text{g}/\text{ml}$) staining of paraffin embedded Human Small Intestine. Steamed antigen retrieval with citrate buffer pH 6, AP-staining. This data is from a previous batch, not on sale.