

Datasheet for ABIN185145
anti-LM07 antibody (Internal Region)[Go to Product page](#)

1 Image

Overview

Quantity:	100 µg
Target:	LM07
Binding Specificity:	Internal Region
Reactivity:	Human
Host:	Goat
Clonality:	Polyclonal
Conjugate:	This LM07 antibody is un-conjugated
Application:	Western Blotting (WB), ELISA

Product Details

Purpose:	LM07 / FBX020
Immunogen:	Peptide with sequence ESTCVSASLP RS, from the internal region of the protein sequence according to AAD33924.1.
Sequence:	ESTCVSASLP RS
Isotype:	IgG
Specificity:	Please note that the amino acid sequence of the immunizing peptide differs one amino acid from the current NCBI accession numbers (NP_005349.3, NP_056667.2). This antibody is expected to recognise both reported isoforms (NP_005349.3, NP_056667.2).
Cross-Reactivity:	Dog, Human, Mouse, Rat
Purification:	Purified from goat serum by ammonium sulphate precipitation followed by antigen affinity

Product Details

chromatography using the immunizing peptide.

Grade: Verified

Target Details

Target: LM07

Alternative Name: LM07 ([LM07 Products](#))

Background: LM07, FBX020, LOMP, FBX20, KIAA0858, LIM domain only 7, LOMP protein, F-box protein Fbx20, F-box only protein 20, zinc-finger domain-containing protein, RP11-332E3.2

Gene ID: 4008

Application Details

Application Notes: Western Blot: Approx 70-75 kDa band and approx 30 kDa band observed in Human Lung lysates (predicted MWs of 92 kDa according to AAD33924.1 - however our result agrees with Putilina et al as below). A minor band of unknown identity was also consistently observed. Peptide ELISA: antibody detection limit dilution 1:32000.

Restrictions: For Research Use only

Handling

Format: Liquid

Concentration: 0.5 mg/mL

Buffer: Supplied at 0.5 mg/mL in Tris saline, 0.02 % sodium azide, pH 7.3 with 0.5 % bovine serum albumin.

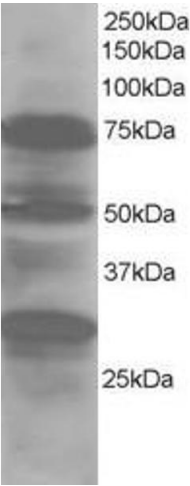
Preservative: Sodium azide

Precaution of Use: This product contains Sodium azide: a POISONOUS AND HAZARDOUS SUBSTANCE which should be handled by trained staff only.

Handling Advice: Minimize freezing and thawing.

Storage: -20 °C

Storage Comment: Aliquot and store at -20°C, with minimal freeze/thawing. A working aliquot may be refrigerated at 4°C for a few weeks and still remain viable.



Western Blotting

Image 1. ABIN185145 staining (1µg/ml) of Human Lung lysate (RIPA buffer, 30µg total protein per lane). Primary incubated for 1 hour. Detected by western blot using chemiluminescence.