

Datasheet for ABIN185147  
**anti-SNX5 antibody (C-Term)**[Go to Product page](#)

## 2 Images

## Overview

Quantity:	100 µg
Target:	SNX5
Binding Specificity:	C-Term
Reactivity:	Human
Host:	Goat
Clonality:	Polyclonal
Conjugate:	This SNX5 antibody is un-conjugated
Application:	Western Blotting (WB), ELISA, Immunohistochemistry (IHC)

## Product Details

Purpose:	SNX5
Immunogen:	Peptide with sequence SLLQSCIDLFKNN, from the C Terminus of the protein sequence according to NP_055241.1, NP_689413.1.
Sequence:	SLLQSCIDLF KNN
Isotype:	IgG
Specificity:	This antibody is expected to recognize both reported isoforms (NP_055241.1, NP_001269383.1). Reported variants represent identical protein: NP_055241.1, NP_689413.1
Cross-Reactivity:	Cow, Dog, Human, Mouse, Pig, Rat
Purification:	Purified from goat serum by ammonium sulphate precipitation followed by antigen affinity chromatography using the immunizing peptide.

## Product Details

Grade: Verified

## Target Details

Target: SNX5

Alternative Name: SNX5 ([SNX5 Products](#))

Background: SNX5, FLJ10931, sorting nexin 5, RP11-504H3.2

Gene ID: 27131, 69178

NCBI Accession: [NP\\_055241](#), [NP\\_001269383](#)

## Application Details

Application Notes: Immunohistochemistry: In paraffin embedded Human Breast shows cytoplasm staining of ductal epithelial cells. Cytoplasm staining is also observed in PCT of Human Kidney and in trophoblasts of Human Placenta . Recommended concentration: 3-6 µg/mL.

Western Blot: Approx. 48 kDa band observed in Jurkat and A549 lysates (calculated MW of 46.8 kDa according to NP\_055241.1). Recommended concentration: 1-3 µg/mL. Primary incubation was one hour.

Peptide ELISA: antibody detection limit dilution 1:32000.

Restrictions: For Research Use only

## Handling

Format: Liquid

Concentration: 0.5 mg/mL

Buffer: Supplied at 0.5 mg/mL in Tris saline, 0.02 % sodium azide, pH 7.3 with 0.5 % bovine serum albumin.

Preservative: Sodium azide

Precaution of Use: This product contains Sodium azide: a POISONOUS AND HAZARDOUS SUBSTANCE which should be handled by trained staff only.

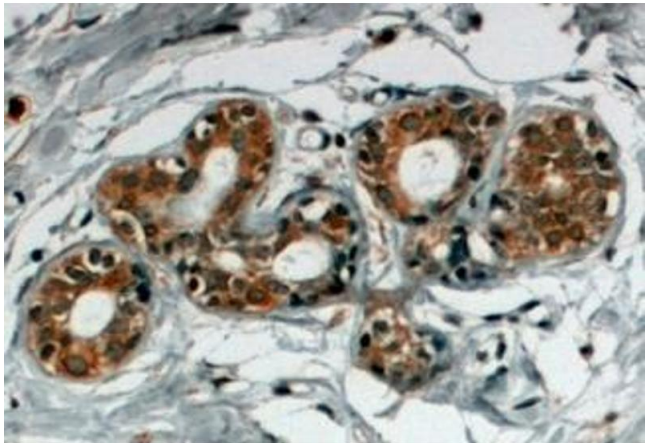
Handling Advice: Minimize freezing and thawing.

Storage: -20 °C

Storage Comment: Aliquot and store at -20°C, with minimal freeze/thawing. A working aliquot may be refrigerated

at 4°C for a few weeks and still remain viable.

Images



Immunohistochemistry

**Image 1.** ABIN185147 (4µg/ml) staining of paraffin embedded Human Breast. Steamed antigen retrieval with citrate buffer pH 6, HRP-staining.



Western Blotting

**Image 2.** ABIN185147 staining (1µg/ml) of Jurkat lysate (RIPA buffer, 35µg total protein per lane). Detected by chemiluminescence.