

Datasheet for ABIN185150  
**anti-MPP5 antibody (N-Term)**

## 7 Images

[Go to Product page](#)

## Overview

Quantity:	100 µg
Target:	MPP5
Binding Specificity:	N-Term
Reactivity:	Human
Host:	Goat
Clonality:	Polyclonal
Conjugate:	This MPP5 antibody is un-conjugated
Application:	ELISA, Immunohistochemistry (IHC), Immunofluorescence (IF), Flow Cytometry (FACS)

## Product Details

Purpose:	PALS / MPP5
Immunogen:	NKASPPFPLISNAQ-C
Sequence:	NKASPPFPLI SNAQ
Isotype:	IgG
Cross-Reactivity:	Cow, Dog, Human, Pig
Purification:	Purified from goat serum by ammonium sulphate precipitation followed by antigen affinity chromatography using the immunizing peptide.
Grade:	Verified

## Target Details

Target:	MPP5
Alternative Name:	MPP5 ( <a href="#">MPP5 Products</a> )
Background:	MPP5, PALS1, FLJ12615, membrane protein, palmitoylated 5 (MAGUK p55 subfamily member 5), stardust (Drosophila), MAGUK p55 subfamily member 5, membrane protein, palmitoylated 5, stardust
Gene ID:	64398
NCBI Accession:	<a href="#">NP_071919</a>
Pathways:	<a href="#">Nucleotide Phosphorylation</a> , <a href="#">Tube Formation</a> , <a href="#">Asymmetric Protein Localization</a>

## Application Details

Application Notes:	<p>Immunohistochemistry: Paraffin embedded Human Small Intestine and Kidney. Recommended concentration: 5 µg/mL.</p> <p>Western Blot: Preliminary testing showed a band at approx 75 kDa in Human Cerebellum lysate after 1 µg/mL antibody staining (calculated MW of 73.4 kDa according to NP_001243479.1). Primary incubation 1 hour at room temperature.</p> <p>Peptide ELISA: antibody detection limit dilution 1:32000.</p>
Comment:	<p><b>Immunofluorescence:</b> Strong expression of the protein seen in U2OS and HeLa cells. Recommended concentration: 10µg/ml.</p> <p><b>Flow Cytometry:</b> Flow cytometric analysis of HeLa cells. Recommended concentration: 10ug/ml.</p>
Restrictions:	For Research Use only

## Handling

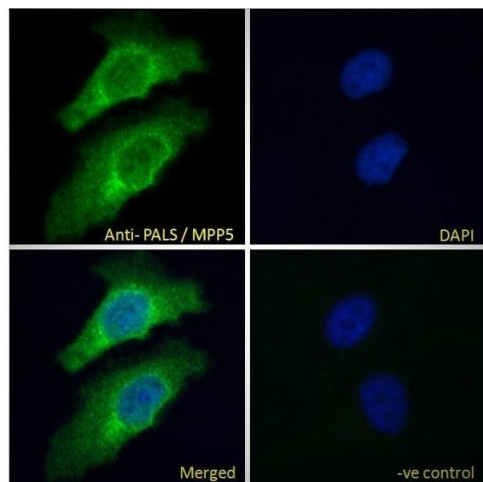
Format:	Liquid
Concentration:	0.5 mg/mL
Buffer:	Supplied at 0.5 mg/mL in Tris saline, 0.02 % sodium azide, pH 7.3 with 0.5 % bovine serum albumin.
Preservative:	Sodium azide
Precaution of Use:	This product contains Sodium azide: a POISONOUS AND HAZARDOUS SUBSTANCE which should be handled by trained staff only.
Handling Advice:	Minimize freezing and thawing.

## Handling

Storage: -20 °C

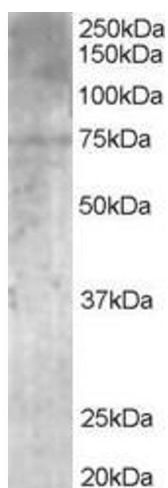
Storage Comment: Aliquot and store at -20°C, with minimal freeze/thawing. A working aliquot may be refrigerated at 4°C for a few weeks and still remain viable.

## Images



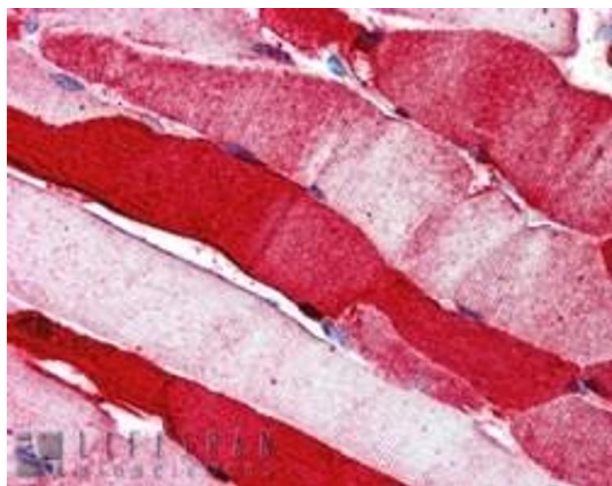
### Immunofluorescence

**Image 1.** ABIN185150 Immunofluorescence analysis of paraformaldehyde fixed HeLa cells, permeabilized with 0.15 % Triton. Primary incubation 1hr (10 µg/mL) followed by Alexa Fluor 488 secondary antibody (2 µg/mL), showing Golgi and cytoplasmic staining. The nuclear stain



### Western Blotting

**Image 2.** ABIN185150 (1µg/ml) staining of Human Brain lysate (35µg protein in RIPA buffer). Detected by chemiluminescence.



### Immunohistochemistry

**Image 3.** ABIN185150 (5µg/ml) staining of paraffin embedded Human Skeletal Muscle. Steamed antigen retrieval with citrate buffer pH 6, AP-staining.

Please check the [product details page](#) for more images. Overall 7 images are available for ABIN185150.