

Datasheet for ABIN185151  
**anti-MPP6 antibody (N-Term)**[Go to Product page](#)

## 2 Images

## Overview

Quantity:	100 µg
Target:	MPP6
Binding Specificity:	N-Term
Reactivity:	Human
Host:	Goat
Clonality:	Polyclonal
Conjugate:	This MPP6 antibody is un-conjugated
Application:	Western Blotting (WB), ELISA, Immunohistochemistry (IHC)

## Product Details

Purpose:	PALS2 / VAM1 / MPP6
Immunogen:	Peptide with sequence QQVLENLTLPSS-C, from the N Terminus of the protein sequence according to NP_057531.2.
Sequence:	QQVLENLTLPSS
Isotype:	IgG
Cross-Reactivity:	Cow, Dog, Human, Mouse, Pig, Rat
Purification:	Purified from goat serum by ammonium sulphate precipitation followed by antigen affinity chromatography using the immunizing peptide.
Grade:	Verified

## Target Details

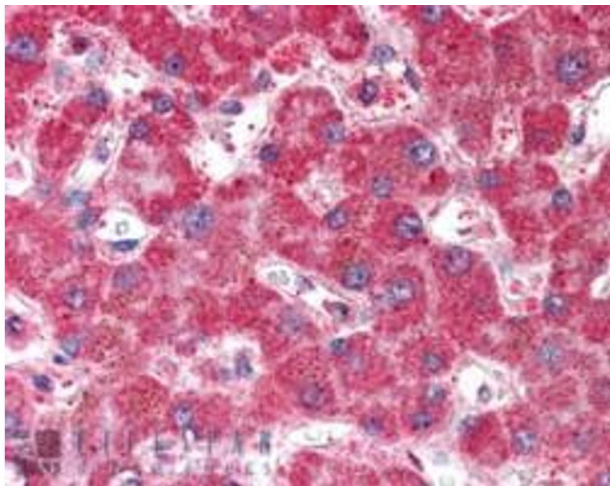
Target:	MPP6
Alternative Name:	MPP6 ( <a href="#">MPP6 Products</a> )
Background:	MPP6, VAM1, p55T, VAM-1, membrane protein, palmitoylated 6 (MAGUK p55 subfamily member 6), MAGUK protein p55T, VELL-associated MAGUK 1, protein associated with Lin7 2, PALS2
Gene ID:	51678, 56524
NCBI Accession:	<a href="#">NP_057531</a>
Pathways:	<a href="#">Nucleotide Phosphorylation</a>

## Application Details

Application Notes:	Immunohistochemistry: Paraffin embedded Human Liver. Recommended concentration: 5 µg/mL.  Western Blot: Approx 60 kDa band observed in lysates of cell line HEK293 (calculated MW of 61.1 kDa according to NP_057531.2). Recommended concentration: 0.3-1 µg/mL. Primary incubated was for 1 hour. An additional band of unknown identity was also consi  Peptide ELISA: antibody detection limit dilution 1:128000.
Restrictions:	For Research Use only

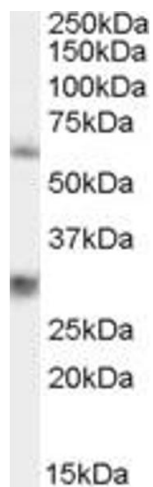
## Handling

Format:	Liquid
Concentration:	0.5 mg/mL
Buffer:	Supplied at 0.5 mg/mL in Tris saline, 0.02 % sodium azide, pH 7.3 with 0.5 % bovine serum albumin.
Preservative:	Sodium azide
Precaution of Use:	This product contains Sodium azide: a POISONOUS AND HAZARDOUS SUBSTANCE which should be handled by trained staff only.
Handling Advice:	Minimize freezing and thawing.
Storage:	-20 °C
Storage Comment:	Aliquot and store at -20°C, with minimal freeze/thawing. A working aliquot may be refrigerated at 4°C for a few weeks and still remain viable.



#### Immunohistochemistry

**Image 1.** ABIN185151 (5µg/ml) staining of paraffin embedded Human Liver. Steamed antigen retrieval with citrate buffer pH 6, AP-staining.



#### Western Blotting

**Image 2.** ABIN185151 staining (0.3µg/ml) of 293 lysate (RIPA buffer, 35µg total protein per lane). Detected by western blot using chemiluminescence.