

Datasheet for ABIN185153
anti-PDLIM1 antibody (C-Term)

2 Images

[Go to Product page](#)

Overview

Quantity:	100 µg
Target:	PDLIM1
Binding Specificity:	C-Term
Reactivity:	Human
Host:	Goat
Clonality:	Polyclonal
Conjugate:	This PDLIM1 antibody is un-conjugated
Application:	Western Blotting (WB), ELISA, Immunohistochemistry (IHC)

Product Details

Purpose:	CLIM1 / PDLIM1
Immunogen:	Peptide with sequence C-TPPEGYEVVTVFPK, from the C Terminus of the protein sequence according to NP_066272.1.
Sequence:	TPPEGYEVVT VFPK
Isotype:	IgG
Cross-Reactivity:	Human
Purification:	Purified from goat serum by ammonium sulphate precipitation followed by antigen affinity chromatography using the immunizing peptide.
Grade:	Verified

Target Details

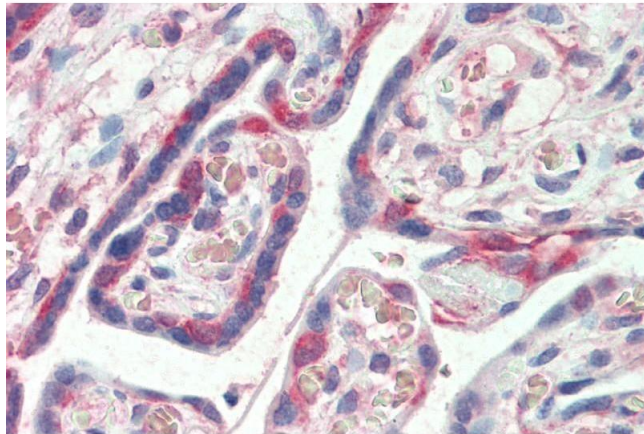
Target:	PDLIM1
Alternative Name:	PDLIM1 (PDLIM1 Products)
Background:	PDLIM1, CLIM1, CLP36, ELFIN, CLP-36, hCLIM1, PDZ and LIM domain 1 (elfin), carboxy terminal LIM domain protein 1, PDZ and LIM domain 1, elfin, enigma
Gene ID:	9124
NCBI Accession:	NP_066272

Application Details

Application Notes:	Immunohistochemistry: Paraffin embedded Human Placenta. Recommended concentration: 5 µg/mL. Western Blot: Approx 37 kDa band observed in Human Lung lysate (calculated MW of 36.1 kDa according to NP_066272.1). Recommended concentration: 0.1-0.3 µg/mL. Peptide ELISA: antibody detection limit dilution 1:64000.
Restrictions:	For Research Use only

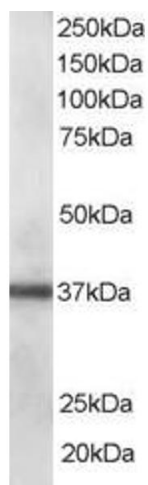
Handling

Format:	Liquid
Concentration:	0.5 mg/mL
Buffer:	Supplied at 0.5 mg/mL in Tris saline, 0.02 % sodium azide, pH 7.3 with 0.5 % bovine serum albumin.
Preservative:	Sodium azide
Precaution of Use:	This product contains Sodium azide: a POISONOUS AND HAZARDOUS SUBSTANCE which should be handled by trained staff only.
Handling Advice:	Minimize freezing and thawing.
Storage:	-20 °C
Storage Comment:	Aliquot and store at -20°C, with minimal freeze/thawing. A working aliquot may be refrigerated at 4°C for a few weeks and still remain viable.



Immunohistochemistry

Image 1. ABIN185153 (5µg/ml) staining of paraffin embedded Human Placenta. Steamed antigen retrieval with citrate buffer pH 6, AP-staining.



Western Blotting

Image 2. ABIN185153 staining (0.1µg/ml) of human lung lysate (RIPA buffer, 35µg total protein per lane). Primary incubated for 1 hour. Detected by western blot using chemiluminescence.