



[Go to Product page](#)

Datasheet for ABIN185154
anti-EIF4ENIF1 antibody (C-Term)

2 Images

Overview

Quantity:	100 µg
Target:	EIF4ENIF1
Binding Specificity:	C-Term
Reactivity:	Human
Host:	Goat
Clonality:	Polyclonal
Conjugate:	This EIF4ENIF1 antibody is un-conjugated
Application:	Western Blotting (WB), ELISA, Immunohistochemistry (IHC)

Product Details

Purpose:	4E-T / EIF4ENIF1
Immunogen:	Peptide with sequence C-AKVISVDELEYRQ, from the C Terminus of the protein sequence according to NP_062817.2, NP_001157974.1.
Sequence:	AKVISVDELE YRQ
Isotype:	IgG
Specificity:	This antibody is expected to recognise isoform 1 (NP_062817.2) and isoform b (NP_001157974.1). Reported variants represent identical protein (NP_062817.2, NP_001157973.1).
Cross-Reactivity:	Cow, Dog, Human, Mouse, Pig, Rat
Purification:	Purified from goat serum by ammonium sulphate precipitation followed by antigen affinity

Product Details

chromatography using the immunizing peptide.

Grade: Verified

Target Details

Target: EIF4ENIF1

Alternative Name: EIF4ENIF1 ([EIF4ENIF1 Products](#))

Background: EIF4ENIF1, 4E-T, Clast4, FLJ21601, 2610509L04Rik, eukaryotic translation initiation factor 4E nuclear import factor 1, eIF4E-transporter, FLJ26551, OTTHUMP00000063276

Gene ID: 56478, 74203

NCBI Accession: [NP_062817](#), [NP_001157974](#)

Application Details

Application Notes: Immunohistochemistry: In paraffin embedded Human Pancreas shows strong staining of cytoplasm in acinar cells-. Recommended concentration, 5-10 µg/mL.
Western Blot: Approx 140-150 kDa band observed in 293 lysates (predicted size of approx. 108 kDa according to NP_062817.1, however our observation agrees with that of Dostie et al (see below)). Recommended for use at 0.25-0.5 µg/mL
Peptide ELISA: antibody detection limit dilution 1:32000.

Restrictions: For Research Use only

Handling

Format: Liquid

Concentration: 0.5 mg/mL

Buffer: Supplied at 0.5 mg/mL in Tris saline, 0.02 % sodium azide, pH 7.3 with 0.5 % bovine serum albumin.

Preservative: Sodium azide

Precaution of Use: This product contains Sodium azide: a POISONOUS AND HAZARDOUS SUBSTANCE which should be handled by trained staff only.

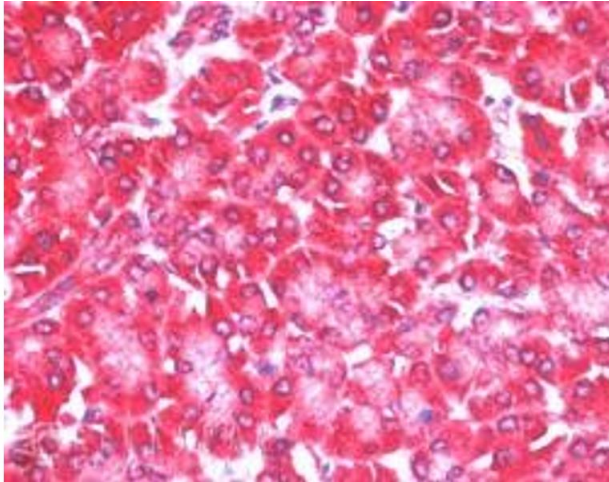
Handling Advice: Minimize freezing and thawing.

Storage: -20 °C

Handling

Storage Comment: Aliquot and store at -20°C, with minimal freeze/thawing. A working aliquot may be refrigerated at 4°C for a few weeks and still remain viable.

Images



Immunohistochemistry

Image 1. ABIN185154 (5µg/ml) staining of paraffin embedded Human Pancreas. Steamed antigen retrieval with citrate buffer pH 6, AP-staining.



Western Blotting

Image 2. ABIN185154 staining (0.25µg/ml) of 293 lysate (RIPA buffer, 35µg total protein per lane). Primary incubated for 1 hour. Detected by western blot using chemiluminescence.