

Datasheet for ABIN185157  
**anti-KPNA2 antibody (C-Term)**

## 4 Images

[Go to Product page](#)

## Overview

|                      |  |
|----------------------|--|
| Quantity:            | 100 µg   |
| Target:              | KPNA2  |
| Binding Specificity: | C-Term   |
| Reactivity:          | Human, Rat   |
| Host:                | Goat   |
| Clonality:           | Polyclonal   |
| Conjugate:           | This KPNA2 antibody is un-conjugated   |
| Application:         | Western Blotting (WB), ELISA, Immunohistochemistry (IHC), Immunofluorescence (IF), Flow Cytometry (FACS) |

## Product Details

|                   |   |
|-------------------|---|
| Purpose:          | KPNA2 / IPOA1   |
| Immunogen:        | Peptide with sequence C-QVQDGAPGTFNF, from the C Terminus of the protein sequence according to NP_002257.1.                           |
| Sequence:         | QVQDGAPGTF NF   |
| Isotype:          | IgG   |
| Cross-Reactivity: | Dog, Human, Mouse, Rat  |
| Purification:     | Purified from goat serum by ammonium sulphate precipitation followed by antigen affinity chromatography using the immunizing peptide. |
| Grade:            | Verified  |

## Target Details

|                   |  |
|-------------------|--|
| Target:           | KPNA2  |
| Alternative Name: | KPNA2 ( <a href="#">KPNA2 Products</a> )   |
| Background:       | KPNA2, IPOA1 QIP2, RCH1, SRP1alpha, karyopherin alpha 2 (RAG cohort 1, importin alpha 1), RAG cohort 1, importin alpha 1, importin alpha 2, importin-alpha-P1, karyopherin alpha 2, pendulin |
| Gene ID:          | 3838, 16647, 85245   |
| NCBI Accession:   | <a href="#">NP_002257</a>  |
| Pathways:         | <a href="#">M Phase</a> , <a href="#">Protein targeting to Nucleus</a>   |

## Application Details

|                    |  |
|--------------------|--|
| Application Notes: | <p>Immunohistochemistry: Paraffin embedded Human Testis. Recommended concentration: 5 µg/mL.</p> <p>Western Blot: Approx 55 kDa band observed in lysates of cell lines CaCo-2, Jurkat, and KNRK, and approx. 58 kDa in lysates of cell lines MCF7 and A549 (calculated MW of 57.9 kDa according to Human NP_002257.1 and Rat NP_001257731.1). Recommended concentration</p> <p>Peptide ELISA: antibody detection limit dilution 1:32000.</p> |
| Comment:           | <p><b>Immunofluorescence:</b> Strong expression of the protein seen in U2OS and A549 cells. Recommended concentration: 10µg/ml.</p> <p><b>Flow Cytometry:</b> Flow cytometric analysis of A549 cells. Recommended concentration: 10ug/ml.</p>  |
| Restrictions:      | For Research Use only  |

## Handling

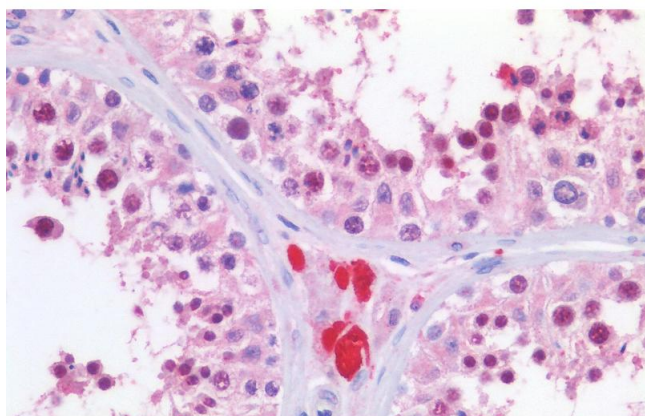
|                    |  |
|--------------------|--|
| Format:            | Liquid   |
| Concentration:     | 0.5 mg/mL  |
| Buffer:            | Supplied at 0.5 mg/mL in Tris saline, 0.02 % sodium azide, pH 7.3 with 0.5 % bovine serum albumin.                     |
| Preservative:      | Sodium azide   |
| Precaution of Use: | This product contains Sodium azide: a POISONOUS AND HAZARDOUS SUBSTANCE which should be handled by trained staff only. |
| Handling Advice:   | Minimize freezing and thawing.   |

## Handling

Storage: -20 °C

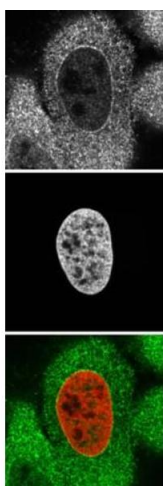
Storage Comment: Aliquot and store at -20°C, with minimal freeze/thawing. A working aliquot may be refrigerated at 4°C for a few weeks and still remain viable.

## Images



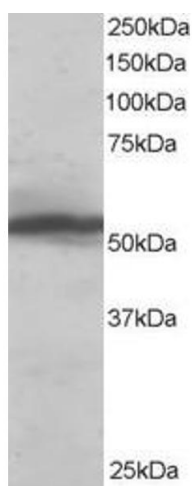
### Immunohistochemistry

**Image 1.** ABIN185157 (5 µg/mL) staining of paraffin embedded Human Testis. Steamed antigen retrieval with citrate buffer pH 6, AP-staining.



### Immunofluorescence

**Image 2.** ABIN185157 staining (top panel and green) of 4% formaldehyde-fixed HeLa with endogenously expressed Histone H2B-GFP fusion as DNA marker (mid panel and red). Data kindly provided by Francisco Iborra, MRC Mol. Haematol. Unit, Oxford.



### Western Blotting

**Image 3.** ABIN185157 staining (0.1 µg/ml) of HeLa lysate (RIPA buffer, 35 µg total protein per lane). Primary incubated for 1 hour. Detected by western blot using chemiluminescence.

Please check the [product details page](#) for more images. Overall 4 images are available for ABIN185157.