

Datasheet for ABIN185160  
**anti-KPNA4 antibody (C-Term)**

6 Images

1 Publication

[Go to Product page](#)

## Overview

Quantity:	100 µg
Target:	KPNA4
Binding Specificity:	C-Term
Reactivity:	Human, Mouse, Rat
Host:	Goat
Clonality:	Polyclonal
Conjugate:	This KPNA4 antibody is un-conjugated
Application:	Western Blotting (WB), ELISA

## Product Details

Purpose:	KPNA4 / IPOA3
Immunogen:	Peptide with sequence C-NSSANVPTEGFQF, from the C Terminus of the protein sequence according to NP_002259.1.
Sequence:	NSSANVPTEG FQF
Isotype:	IgG
Cross-Reactivity:	Cow, Dog, Human, Mouse, Rat
Purification:	Purified from goat serum by ammonium sulphate precipitation followed by antigen affinity chromatography using the immunizing peptide.
Grade:	Verified

## Target Details

Target:	KPNA4
Alternative Name:	KPNA4 ( <a href="#">KPNA4 Products</a> )
Background:	KPNA4, IPOA3, QIP1, SRP3, MGC12217, MGC26703, karyopherin alpha 4 (importin alpha 3), importin alpha 3, importin-alpha-Q1, karyopherin alpha 4
Gene ID:	3840
NCBI Accession:	<a href="#">NP_002259</a>
Pathways:	<a href="#">Protein targeting to Nucleus</a>

## Application Details

Application Notes:	Western Blot: Approx 55 kDa band observed in Human and Mouse Ovary and in Mouse Testis lysates, and approx 60 kDa in Rat Testis lysates (calculated MW of 57.9 kDa according to Human NP_002259.1, Mouse NP_032493.1 and Rat NP_001014793.1). Recommended conce Peptide ELISA: antibody detection limit dilution 1:128000.
Restrictions:	For Research Use only

## Handling

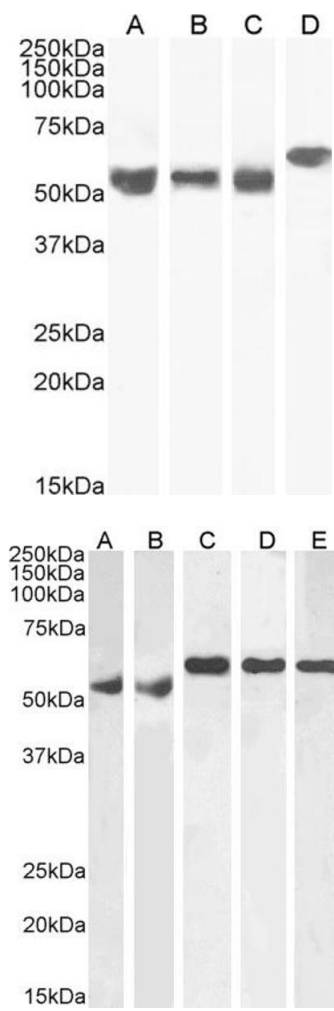
Format:	Liquid
Concentration:	0.5 mg/mL
Buffer:	Supplied at 0.5 mg/mL in Tris saline, 0.02 % sodium azide, pH 7.3 with 0.5 % bovine serum albumin.
Preservative:	Sodium azide
Precaution of Use:	This product contains Sodium azide: a POISONOUS AND HAZARDOUS SUBSTANCE which should be handled by trained staff only.
Handling Advice:	Minimize freezing and thawing.
Storage:	-20 °C
Storage Comment:	Aliquot and store at -20°C, with minimal freeze/thawing. A working aliquot may be refrigerated at 4°C for a few weeks and still remain viable.

## Publications

Product cited in:	Huenniger, Krämer, Soom, Chang, Köhler, Depping, Kehlenbach, Kaether: "Notch1 signaling is
-------------------	--

mediated by importins alpha 3, 4, and 7." in: **Cellular and molecular life sciences : CMLS**, Vol. 67, Issue 18, pp. 3187-96, (2010) ([PubMed](#)).

Images

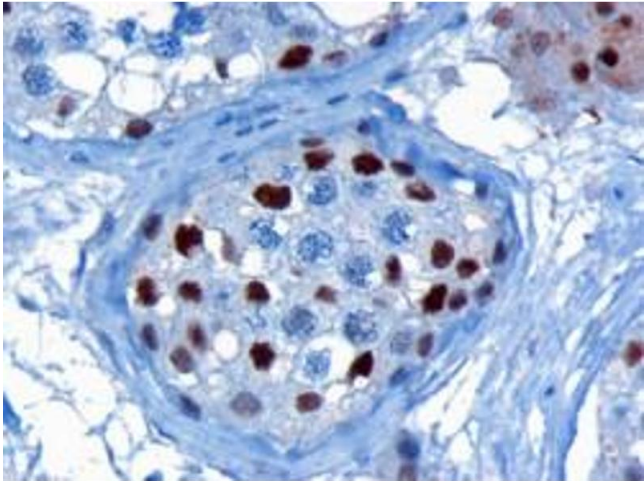


**Western Blotting**

**Image 1.** (ABIN185160) staining (0.1 µg/mL) of Human Ovary (A), Mouse Testes (B), (0.3 µg/mL) Mouse Ovary (C) and (0.03 µg/mL) Rat Testes (D) lysate (RIPA buffer, 35 µg total protein per lane). Detected by chemiluminescence.

**Western Blotting**

**Image 2.** ABIN185160 (1µg/ml) staining of Human Testes (A), Human Ovary (B), Mouse Testes (C), Rat Testes (D) and Rat Ovary (E) lysate (RIPA buffer, 35µg total protein per lane). Detected by chemiluminescence.



**Immunohistochemistry**

**Image 3.** ABIN185160 (3µg/ml) staining of paraffin embedded Human Testis. Microwaved antigen retrieval with citrate buffer pH 6, HRP-staining. **This data is from a previous batch, not on sale.**

Please check the [product details page](#) for more images. Overall 6 images are available for ABIN185160.