



[Go to Product page](#)

Datasheet for ABIN185161
anti-GOPC antibody (C-Term)

1 Image

Overview

Quantity:	100 µg
Target:	GOPC
Binding Specificity:	C-Term
Reactivity:	Human
Host:	Goat
Clonality:	Polyclonal
Conjugate:	This GOPC antibody is un-conjugated
Application:	Western Blotting (WB), ELISA, Immunofluorescence (IF)

Product Details

Purpose:	PIST / FIG / GOPC
Immunogen:	Peptide with sequence C-LDDLHTLYHK KSY, from the C Terminus of the protein sequence according to NP_065132.1, NP_001017408.1.
Sequence:	LDDLHTLYHK KSY
Isotype:	IgG
Specificity:	This antibody is expected to recognize both reported isoforms (NP_065132.1, NP_001017408.1).
Cross-Reactivity:	Cow, Dog, Human
Purification:	Purified from goat serum by ammonium sulphate precipitation followed by antigen affinity chromatography using the immunizing peptide.

Product Details

Grade: Verified

Target Details

Target: GOPC

Alternative Name: GOPC ([GOPC Products](#))

Background: PIST, GOPC, CAL, PDZ/coiled-coil domain binding partner for the rho-family GTPase TC10, fused in glioblastoma, CFTR-associated ligand, Golgi associated PDZ and coiled-coil motif containing protein, golgi associated PDZ and coiled-coil motif containing, CA

Gene ID: 57120

NCBI Accession: [NP_065132](#), [NP_001017408](#)

Pathways: [Maintenance of Protein Location](#), [Asymmetric Protein Localization](#)

Application Details

Application Notes: Western Blot: Approx. 55 kDa band observed in Human Brain (Frontal Cortex) lysates (calculated MW of 50.5 kDa according to NP_065132.1). Recommended concentration: 0.05-0.2 µg/mL.

Peptide ELISA: antibody detection limit dilution 1:128000.

Comment: **Immunofluorescence:** This product has been successfully used on HeLa cells.

Restrictions: For Research Use only

Handling

Format: Liquid

Concentration: 0.5 mg/mL

Buffer: Supplied at 0.5 mg/mL in Tris saline, 0.02 % sodium azide, pH 7.3 with 0.5 % bovine serum albumin.

Preservative: Sodium azide

Precaution of Use: This product contains Sodium azide: a POISONOUS AND HAZARDOUS SUBSTANCE which should be handled by trained staff only.

Handling Advice: Minimize freezing and thawing.

Storage: -20 °C

Handling

Storage Comment: Aliquot and store at -20°C, with minimal freeze/thawing. A working aliquot may be refrigerated at 4°C for a few weeks and still remain viable.

Images

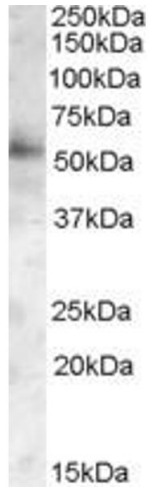


Image 1. ABIN185161 (0.05µg/ml) staining of Human Frontal Cortex lysate (35µg protein in RIPA buffer). Primary incubation was 1 hour. Detected by chemiluminescence.