



[Go to Product page](#)

Datasheet for ABIN185169

## anti-SDCBP2 antibody (C-Term)

### 1 Image

#### Overview

Quantity:	100 µg
Target:	SDCBP2
Binding Specificity:	C-Term
Reactivity:	Human
Host:	Goat
Clonality:	Polyclonal
Conjugate:	This SDCBP2 antibody is un-conjugated
Application:	ELISA, Immunohistochemistry (IHC)

#### Product Details

Purpose:	Syntenin 2
Immunogen:	Peptide with sequence C-LLHHTMDHSIPDA, from the C Terminus of the protein sequence according to NP_056500.3, NP_536737.3.
Sequence:	LLHHTMDHSI PDA
Isotype:	IgG
Specificity:	This antibody is expected to recognise both human isoforms (NP_056500, NP_536737).
Cross-Reactivity:	Human, Mouse, Rat
Purification:	Purified from goat serum by ammonium sulphate precipitation followed by antigen affinity chromatography using the immunizing peptide.
Grade:	Verified

## Target Details

---

Target:	SDCBP2
Alternative Name:	SDCBP2 ( <a href="#">SDCBP2 Products</a> )
Background:	SDCBP2, ST-2, SITAC18, syndecan binding protein (syntenin) 2, syntenin-2, FLJ12256, OTTHUMP00000029961, OTTHUMP00000029964, syndecan binding protein 2
Gene ID:	27111, 228765
NCBI Accession:	<a href="#">NP_056500</a> , <a href="#">NP_536737</a>

## Application Details

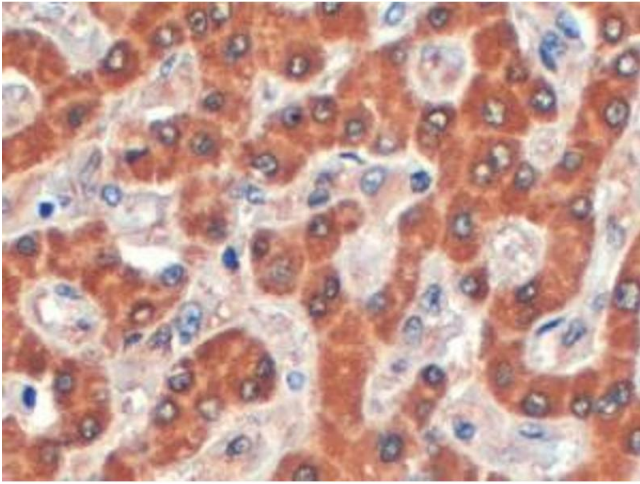
---

Application Notes:	Immunohistochemistry: In paraffin embedded Human Liver shows staining of cytoplasm in hepatocytes. Recommended concentration, 4-6 µg/mL. Peptide ELISA: antibody detection limit dilution 1:16000.
Restrictions:	For Research Use only

## Handling

---

Format:	Liquid
Concentration:	0.5 mg/mL
Buffer:	Supplied at 0.5 mg/mL in Tris saline, 0.02 % sodium azide, pH 7.3 with 0.5 % bovine serum albumin.
Preservative:	Sodium azide
Precaution of Use:	This product contains Sodium azide: a POISONOUS AND HAZARDOUS SUBSTANCE which should be handled by trained staff only.
Handling Advice:	Minimize freezing and thawing.
Storage:	-20 °C
Storage Comment:	Aliquot and store at -20°C, with minimal freeze/thawing. A working aliquot may be refrigerated at 4°C for a few weeks and still remain viable.



#### Immunohistochemistry

**Image 1.** ABIN185169 (4µg/ml) staining of paraffin embedded Human Liver. Steamed antigen retrieval with citrate buffer pH 6, HRP-staining.