



[Go to Product page](#)

Datasheet for ABIN185170  
**anti-RANGAP1 antibody (N-Term)**

2 Images

Overview

Quantity:	100 µg
Target:	RANGAP1
Binding Specificity:	N-Term
Reactivity:	Human, Mouse
Host:	Goat
Clonality:	Polyclonal
Conjugate:	This RANGAP1 antibody is un-conjugated
Application:	Western Blotting (WB), Immunohistochemistry (IHC), ELISA

Product Details

Purpose:	RANGAP1
Immunogen:	Peptide with sequence ASEDIKLAETLAK-C, from the N Terminus of the protein sequence according to NP_002874.1.
Sequence:	ASEDIKLAETLAK
Isotype:	IgG
Specificity:	Please note that in mouse, there is a hypothetical protein called "similar to RANGAP1" (XP_139737.2) that is virtually identical.
Cross-Reactivity:	Cow, Dog, Human, Mouse, Rat
Purification:	Purified from goat serum by ammonium sulphate precipitation followed by antigen affinity chromatography using the immunizing peptide.

## Product Details

---

Grade: Verified

## Target Details

---

Target: RANGAP1

Alternative Name: RANGAP1 ([RANGAP1 Products](#))

Background: RANGAP1, KIAA1835, Ran GTPase activating protein 1, Fug1, MGC20266, SD, OTTHUMP00000198756, OTTHUMP00000198757, segregation distorter homolog, segregation distortion

Gene ID: 5905, 19387

NCBI Accession: [NP\\_002874](#)

Pathways: [M Phase](#), [Protein targeting to Nucleus](#)

## Application Details

---

Application Notes: Immunohistochemistry: In paraffin embedded Human Liver shows vesicular staining in the cytoplasm of hepatocytes. Recommended concentration: 2-4 µg/mL.  
Western Blot: Approx 70 kDa band observed in 3T3 lysates (predicted MW of 68 kDa according to NP\_002874). Recommended for use at 0.1-0.5 µg/mL.  
Peptide ELISA: antibody detection limit dilution 1:32000.

Restrictions: For Research Use only

## Handling

---

Format: Liquid

Concentration: 0.5 mg/mL

Buffer: Supplied at 0.5 mg/mL in Tris saline, 0.02 % sodium azide, pH 7.3 with 0.5 % bovine serum albumin.

Preservative: Sodium azide

Precaution of Use: This product contains Sodium azide: a POISONOUS AND HAZARDOUS SUBSTANCE which should be handled by trained staff only.

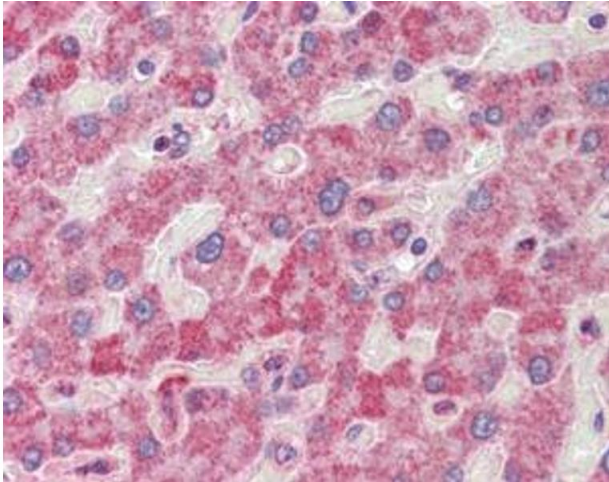
Handling Advice: Minimize freezing and thawing.

Storage: -20 °C

## Handling

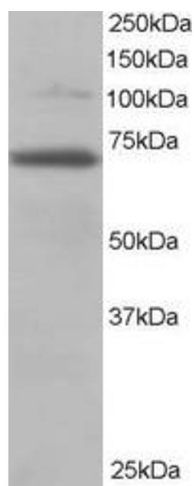
Storage Comment: Aliquot and store at  $-20^{\circ}\text{C}$ , with minimal freeze/thawing. A working aliquot may be refrigerated at  $4^{\circ}\text{C}$  for a few weeks and still remain viable.

## Images



### Immunohistochemistry

**Image 1.** ABIN185170 ( $2.5\mu\text{g}/\text{ml}$ ) staining of paraffin embedded Human Liver. Steamed antigen retrieval with citrate buffer pH 6, AP-staining.



### Western Blotting

**Image 2.** ABIN185170 staining ( $0.2\mu\text{g}/\text{ml}$ ) of 3T3 lysate (RIPA buffer,  $35\mu\text{g}$  total protein per lane). Primary incubated for 1 hour. Detected by chemiluminescence.