

Datasheet for ABIN185173  
**anti-VPS29 antibody (C-Term)**[Go to Product page](#)

## 1 Image

## Overview

Quantity:	100 µg
Target:	VPS29
Binding Specificity:	C-Term
Reactivity:	Human
Host:	Goat
Clonality:	Polyclonal
Conjugate:	This VPS29 antibody is un-conjugated
Application:	ELISA, Western Blotting (WB)

## Product Details

Purpose:	VPS29 (C Terminus)
Immunogen:	Peptide with sequence C-DDVKVERIEYKKP, from the C Terminus of the protein sequence according to NP_057310.1, NP_476528.1.
Sequence:	DDVKVERIEY KKP
Isotype:	IgG
Specificity:	This antibody is expected to recognise both human isoforms (represented by NP_057310.1, NP_476528.1).
Cross-Reactivity:	Cow, Dog, Human, Mouse, Rat
Purification:	Purified from goat serum by ammonium sulphate precipitation followed by antigen affinity chromatography using the immunizing peptide.

## Product Details

Grade: Verified

## Target Details

Target: VPS29

Alternative Name: VPS29 ([VPS29 Products](#))

Background: VPS29, DC7, DC15, PEP11, FLJ20492, DKFZp564F0223, vacuolar protein sorting 29 (yeast), x007 protein, retromer protein, vacuolar sorting protein VPS29/PEP11, vacuolar protein sorting 29 (yeast homolog), vacuolar protein sorting 29 homolog (S. cerevisiae),

Gene ID: 51699, 56433

NCBI Accession: [NP\\_057310](#), [NP\\_476528](#)

## Application Details

Application Notes: Western Blot: Approx 20+21 kDa bands observed in Human Spleen lysates (calculated MW of 20.5 kDa according to NP\_057310.1 and 20.9 kDa according to NP\_476528.1). Recommended concentration: 0.1-0.3 µg/mL. Primary incubated for 1 hour.  
Peptide ELISA: antibody detection limit dilution 1:16000.

Restrictions: For Research Use only

## Handling

Format: Liquid

Concentration: 0.5 mg/mL

Buffer: Supplied at 0.5 mg/mL in Tris saline, 0.02 % sodium azide, pH 7.3 with 0.5 % bovine serum albumin.

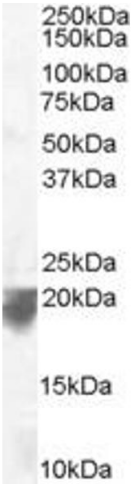
Preservative: Sodium azide

Precaution of Use: This product contains Sodium azide: a POISONOUS AND HAZARDOUS SUBSTANCE which should be handled by trained staff only.

Handling Advice: Minimize freezing and thawing.

Storage: -20 °C

Storage Comment: Aliquot and store at -20°C, with minimal freeze/thawing. A working aliquot may be refrigerated at 4°C for a few weeks and still remain viable.



Western Blotting

**Image 1.** ABIN185173 staining (0.1µg/ml) of Human Spleen lysate (RIPA buffer, 35µg total protein per lane). Detected by chemiluminescence.