

Datasheet for ABIN185178 anti-STK35 antibody (C-Term)



[Go to Product page](#)

5 Images

1 Publication

Overview

Quantity:	100 µg
Target:	STK35
Binding Specificity:	C-Term
Reactivity:	Human, Mouse, Pig
Host:	Goat
Clonality:	Polyclonal
Conjugate:	This STK35 antibody is un-conjugated
Application:	ELISA, Western Blotting (WB), Immunohistochemistry (IHC), Immunofluorescence (IF), Flow Cytometry (FACS)

Product Details

Purpose:	Clik1 / STK35
Immunogen:	Peptide with sequence ELETRMDQVTCAA, from the C Terminus of the protein sequence according to NP_543026.2.
Sequence:	ELETRMDQVT CAA
Isotype:	IgG
Cross-Reactivity:	Cow, Dog, Human, Mouse, Pig, Rat
Purification:	Purified from goat serum by ammonium sulphate precipitation followed by antigen affinity chromatography using the immunizing peptide.
Grade:	Verified

Target Details

Target:	STK35
Alternative Name:	STK35 (STK35 Products)
Background:	STK35, Clik1, bA55008.2, bA55008.2 CLIK1, serine/threonine kinase 35, CLP-36 interacting kinase, CLIK1, STK35L1, OTTHUMP00000030006, serine threonine kinase 35 long form
Gene ID:	140901, 67333
NCBI Accession:	NP_543026

Application Details

Application Notes:	<p>Immunohistochemistry: In paraffin embedded Human Testis shows granular cytoplasmic staining of Leydig cells. Recommended concentration: 10 µg/mL.</p> <p>Western Blot: Approx 55 kDa band observed in Human Breast cancer and in Mouse and Pig Testis lysates, and approx. 58 kDa in nuclear lysates of cell line HEK293 (calculated MW of 58.1 kDa according to Human NP_543026.2, 59.5 kDa according to Mouse NP_899085.3</p> <p>Peptide ELISA: antibody detection limit dilution 1:16000.</p>
Comment:	<p>Immunofluorescence: Strong expression of the protein seen in the nuclei of U2OS cells. Recommended concentration: 10µg/ml.</p> <p>Flow Cytometry: Flow cytometric analysis of HEK293 cells. Recommended concentration: 10ug/ml.</p>
Restrictions:	For Research Use only

Handling

Format:	Liquid
Concentration:	0.5 mg/mL
Buffer:	Supplied at 0.5 mg/mL in Tris saline, 0.02 % sodium azide, pH 7.3 with 0.5 % bovine serum albumin.
Preservative:	Sodium azide
Precaution of Use:	This product contains Sodium azide: a POISONOUS AND HAZARDOUS SUBSTANCE which should be handled by trained staff only.
Handling Advice:	Minimize freezing and thawing.
Storage:	-20 °C

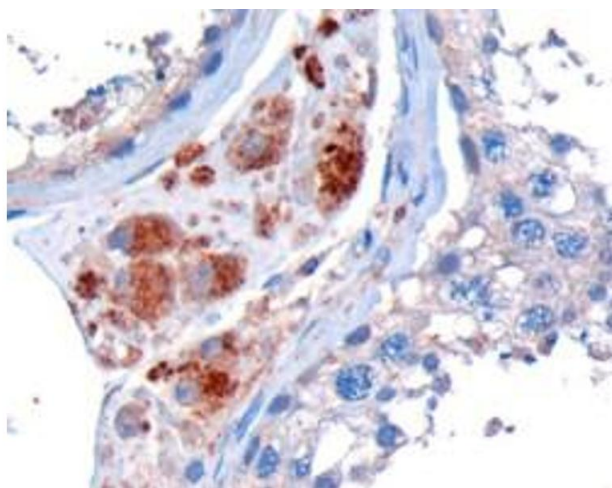
Handling

Storage Comment: Aliquot and store at -20°C, with minimal freeze/thawing. A working aliquot may be refrigerated at 4°C for a few weeks and still remain viable.

Publications

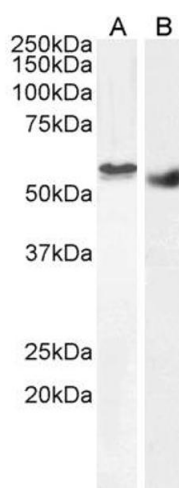
Product cited in: Goyal, Behring, Kumar, Siess: "Identifying and characterizing a novel protein kinase STK35L1 and deciphering its orthologs and close-homologs in vertebrates." in: **PLoS ONE**, Vol. 4, Issue 9, pp. e6981, (2009) ([PubMed](#)).

Images



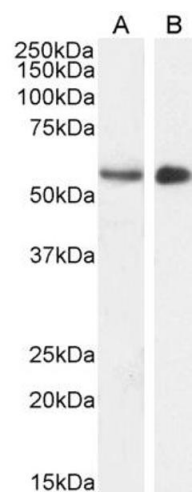
Immunohistochemistry

Image 1. ABIN185178 (10µg/ml) staining of paraffin embedded Human Testis. Microwaved antigen retrieval with Tris/EDTA buffer pH9, HRP-staining.



Western Blotting

Image 2. ABIN185178 (2µg/ml) staining of nuclear HEK293 (A) and (1ug/ml) Human Breast cancer (B) lysate (35µg protein in RIPA buffer). Detected by chemiluminescence.



Western Blotting

Image 3. ABIN185178 (1µg/ml) staining of Mouse (A) and (2ug/ml) Pig (B) Testes lysate (35µg protein in RIPA buffer). Detected by chemiluminescence.

Please check the [product details page](#) for more images. Overall 5 images are available for ABIN185178.