

Datasheet for ABIN185182  
**anti-VPS35 antibody (C-Term)**

14 Images

2 Publications

[Go to Product page](#)

## Overview

Quantity:	100 µg
Target:	VPS35
Binding Specificity:	C-Term
Reactivity:	Human, Mouse, Rat
Host:	Goat
Clonality:	Polyclonal
Conjugate:	This VPS35 antibody is un-conjugated
Application:	Western Blotting (WB), Immunohistochemistry (IHC), Immunofluorescence (IF), ELISA

## Product Details

Purpose:	VPS35 / MEM3
Immunogen:	Peptide with sequence C-SPESEGPIYEGILIL, from the C Terminus of the protein sequence according to NP_060676.2.
Sequence:	SPESEGPIYE GLIL
Isotype:	IgG
Specificity:	Note there is a hypothetical protein called similar to vacuolar protein sorting 35 (XP_040192.1), which is virtually identical.
Cross-Reactivity:	Cow, Human, Mouse, Rat
Purification:	Purified from goat serum by ammonium sulphate precipitation followed by antigen affinity chromatography using the immunizing peptide.

## Product Details

Grade: Verified

## Target Details

Target:	VPS35
Alternative Name:	VPS35 ( <a href="#">VPS35 Products</a> )
Background:	VPS35, MEM3, FLJ10752, FLJ13588, FLJ20388, DKFZp434E1211, DKFZp434P1672, vacuolar protein sorting 35 (yeast), maternal-embryonic 3, vacuolar protein sorting 35 homolog (S. cerevisiae), vacuolar protein sorting 35
Gene ID:	55737, 65114
NCBI Accession:	<a href="#">NP_060676</a>

## Application Details

Application Notes:	Immunohistochemistry: Paraffin embedded Human Prostate. Recommended concentration: 8 µg/mL.  Western Blot: Approx 90 kDa band observed in Human (Cerebellum), Mouse and Rat Brain lysates and in lysates of cell line HepG2, and approx. 85 kDa observed in lysates of cell line HEK293 (calculated MW of 91.7 kDa according to Human NP_060676.2, Mouse NP_0  Peptide ELISA: antibody detection limit dilution 1:128000.
Comment:	<b>Immunofluorescence:</b> Strong expression of the protein seen in the cytoplasm/vesicles of HEK293 and U2OS cells. Recommended concentration: 10µg/ml.
Restrictions:	For Research Use only

## Handling

Format:	Liquid
Concentration:	0.5 mg/mL
Buffer:	Supplied at 0.5 mg/mL in Tris saline, 0.02 % sodium azide, pH 7.3 with 0.5 % bovine serum albumin.
Preservative:	Sodium azide
Precaution of Use:	This product contains Sodium azide: a POISONOUS AND HAZARDOUS SUBSTANCE which should be handled by trained staff only.
Handling Advice:	Minimize freezing and thawing.

## Handling

Storage: -20 °C

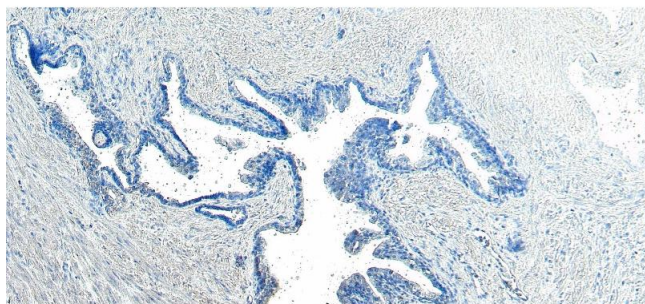
Storage Comment: Aliquot and store at -20°C, with minimal freeze/thawing. A working aliquot may be refrigerated at 4°C for a few weeks and still remain viable.

## Publications

Product cited in: Klinger, Højland, Jain, Kjolby, Madsen, Svendsen, Olivecrona, Bonifacino, Nielsen: "Polarized trafficking of the sorting receptor SorLA in neurons and MDCK cells." in: **The FEBS journal**, Vol. 283, Issue 13, pp. 2476-93, (2017) ([PubMed](#)).

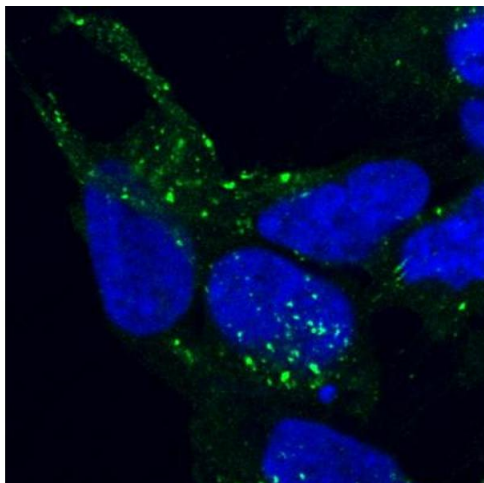
Lee, Uchida, Emoto, Umeda, Kuge, Taguchi, Arai: "Impaired retrograde membrane traffic through endosomes in a mutant CHO cell defective in phosphatidylserine synthesis." in: **Genes to cells : devoted to molecular & cellular mechanisms**, Vol. 17, Issue 8, pp. 728-36, (2012) ([PubMed](#)).

## Images



### Immunohistochemistry

**Image 1.** (ABIN185182) Negative Control showing staining of paraffin embedded Human Prostate, with no primary antibody.



#### Immunofluorescence

**Image 2.** ABIN185182 staining of PFA-fixed and saponin permeabilized HEK293 and detected with FITC in confocal microscopy. Data obtained from Aarhus University Denmark. **This data is from a previous batch, not on sale.**



#### Western Blotting

**Image 3.** ABIN185182 (1µg/ml) staining of Human Cerebellum (A) and Mouse Brain (B) lysates (35µg protein in RIPA buffer). Detected by chemiluminescence.

Please check the [product details page](#) for more images. Overall 14 images are available for ABIN185182.