

Datasheet for ABIN185185
anti-TCP1 alpha/CCTA antibody (C-Term)

5 Images

[Go to Product page](#)

Overview

Quantity:	100 µg
Target:	TCP1 alpha/CCTA (TCP1)
Binding Specificity:	C-Term
Reactivity:	Human
Host:	Goat
Clonality:	Polyclonal
Conjugate:	This TCP1 alpha/CCTA antibody is un-conjugated
Application:	Western Blotting (WB), ELISA, Immunofluorescence (IF), Immunohistochemistry (IHC), Flow Cytometry (FACS)

Product Details

Purpose:	TCP1
Immunogen:	Peptide with sequence C-SYEDAVHSGALND, from the C Terminus of the protein sequence according to NP_110379.2, NP_001008897.1.
Sequence:	SYEDAVHSGA LND
Isotype:	IgG
Specificity:	This antibody is expected to recognise both reported isoforms.
Cross-Reactivity:	Human
Purification:	Purified from goat serum by ammonium sulphate precipitation followed by antigen affinity chromatography using the immunizing peptide.

Product Details

Grade: Verified

Target Details

Target: TCP1 alpha/CCTA (TCP1)

Alternative Name: TCP1 ([TCP1 Products](#))

Background: TCP1, t-complex 1, CCT-alpha, CCT1, CCTa, D6S230E, TCP-1-alpha, T-complex protein 1, T-complex protein 1, alpha subunit, tailless complex polypeptide 1

Gene ID: 6950

NCBI Accession: [NP_110379](#), [NP_001008897](#)

Application Details

Application Notes: Immunohistochemistry: In paraffin embedded Human Testis shows only cytoplasmic staining in some germ cells, and both cytoplasmic and nuclear staining in other germ cells with unstained nucleoli. Recommended concentration: 1-2 µg/mL.

Western Blot: Approx 60 kDa band observed in lysates of cell line HEK293 and in Human Ovary lysates (calculated MW of 60.3 kDa according to NP_110379.2). Recommended concentration: 0.3-1 µg/mL. Primary incubation 1 hour at room temperature.

Peptide ELISA: antibody detection limit dilution 1:32000.

Comment: **Immunofluorescence:** Strong expression of the protein seen in the cytoplasm and nuclei of HeLa cells. Recommended concentration: 10µg/ml.

Flow Cytometry: Flow cytometric analysis of HeLa cells. Recommended concentration

Restrictions: For Research Use only

Handling

Format: Liquid

Concentration: 0.5 mg/mL

Buffer: Supplied at 0.5 mg/mL in Tris saline, 0.02 % sodium azide, pH 7.3 with 0.5 % bovine serum albumin.

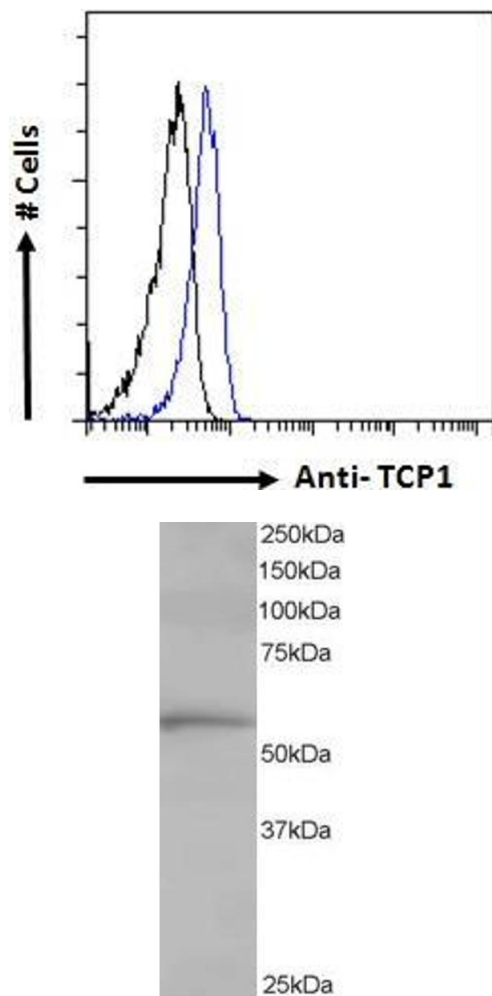
Preservative: Sodium azide

Precaution of Use: This product contains Sodium azide: a POISONOUS AND HAZARDOUS SUBSTANCE which should be handled by trained staff only.

Handling

Handling Advice:	Minimize freezing and thawing.
Storage:	-20 °C
Storage Comment:	Aliquot and store at -20°C, with minimal freeze/thawing. A working aliquot may be refrigerated at 4°C for a few weeks and still remain viable.

Images

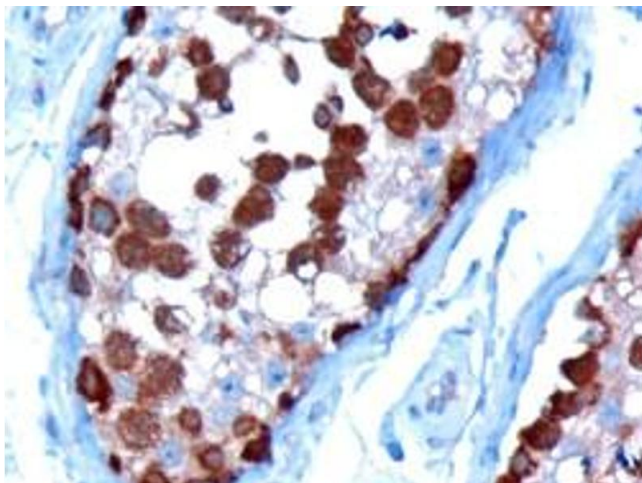


Flow Cytometry

Image 1. ABIN185185 Flow cytometric analysis of paraformaldehyde fixed HeLa cells (blue line), permeabilized with 0.5% Triton. Primary incubation 1hr (10ug/ml) followed by Alexa Fluor 488 secondary antibody (1ug/ml). IgG control: Unimmunized goat IgG (black line) followed by Alexa Fluor 488 secondary antibody.

Western Blotting

Image 2. ABIN185185 staining (1 ug/ml) of Human Lung lysate (RIPA buffer, 35 ug total protein per lane). Primary incubated for 1 hour. Detected by western blot using chemiluminescence.



Immunohistochemistry

Image 3. ABIN185185 (10µg/ml) staining of paraffin embedded Human Testis. Microwaved antigen retrieval with Tris/EDTA buffer pH9, HRP-staining.

Please check the [product details page](#) for more images. Overall 5 images are available for ABIN185185.