

Datasheet for ABIN185194  
**anti-PIK3C2A antibody (C-Term)**

## 3 Images

[Go to Product page](#)

## Overview

Quantity:	100 µg
Target:	PIK3C2A
Binding Specificity:	C-Term
Reactivity:	Human
Host:	Goat
Clonality:	Polyclonal
Conjugate:	This PIK3C2A antibody is un-conjugated
Application:	Immunohistochemistry (IHC), ELISA

## Product Details

Purpose:	PIK3C2A
Immunogen:	Peptide with sequence C-TVKWYQLTAATYL, from the C Terminus of the protein sequence according to NP_002636.2.
Sequence:	TVKWYQLTAA TYL
Isotype:	IgG
Cross-Reactivity:	Dog, Human, Mouse
Purification:	Purified from goat serum by ammonium sulphate precipitation followed by antigen affinity chromatography using the immunizing peptide.
Grade:	Verified

## Target Details

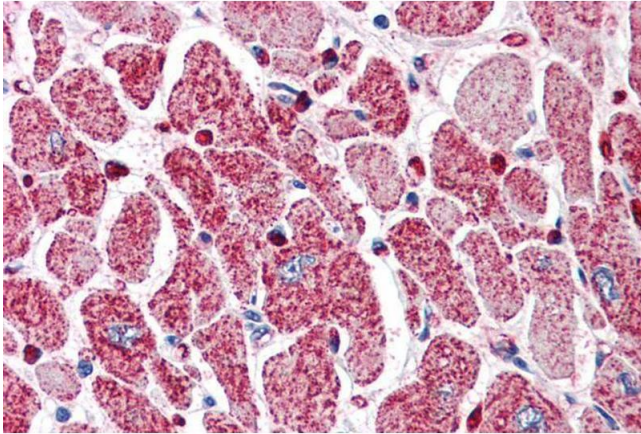
Target:	PIK3C2A
Alternative Name:	PIK3C2A ( <a href="#">PIK3C2A Products</a> )
Background:	PIK3C2A, CPK, PI3-K-C2A, PI3K-C2alpha, PI3-K-C2(ALPHA), phosphoinositide-3-kinase, class 2, alpha polypeptide, C2-containing phosphatidylinositol kinase, DKFZp686L193, MGC142218,
Gene ID:	5286, 18704
NCBI Accession:	<a href="#">NP_002636</a>
Pathways:	<a href="#">EGFR Signaling Pathway</a> , <a href="#">Inositol Metabolic Process</a> , <a href="#">Platelet-derived growth Factor Receptor Signaling</a>

## Application Details

Application Notes:	<p>Immunohistochemistry: In paraffin embedded Human Placenta shows cytoplasm staining of cytotrophoblasts and mesenchymal cells. Recommended concentration: 2-4 µg/mL. Paraffin embedded Human Heart. Recommended concentration: 5 µg/mL.</p> <p>Western Blot: Preliminary experiments gave no signal but low background in Human Testis and Molt-4 lysates at up to 1 µg/mL.</p> <p>Peptide ELISA: antibody detection limit dilution 1:32000.</p>
Restrictions:	For Research Use only

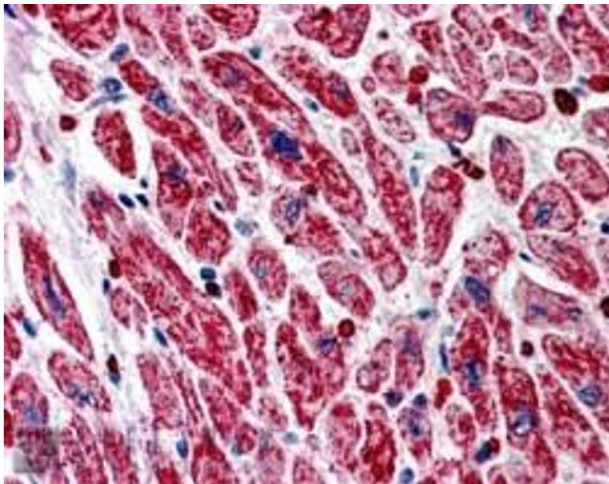
## Handling

Format:	Liquid
Concentration:	0.5 mg/mL
Buffer:	Supplied at 0.5 mg/mL in Tris saline, 0.02 % sodium azide, pH 7.3 with 0.5 % bovine serum albumin.
Preservative:	Sodium azide
Precaution of Use:	This product contains Sodium azide: a POISONOUS AND HAZARDOUS SUBSTANCE which should be handled by trained staff only.
Handling Advice:	Minimize freezing and thawing.
Storage:	-20 °C
Storage Comment:	Aliquot and store at -20°C, with minimal freeze/thawing. A working aliquot may be refrigerated at 4°C for a few weeks and still remain viable.



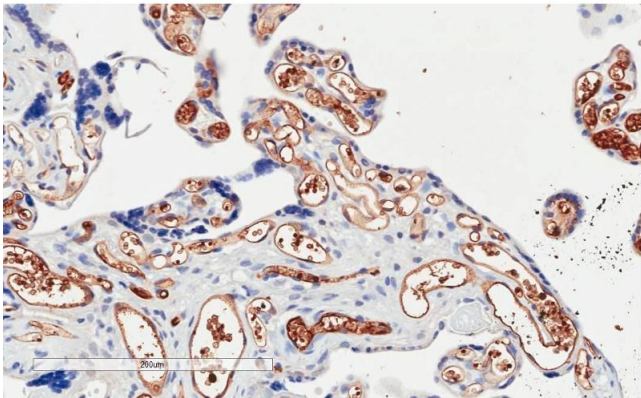
#### Immunohistochemistry

**Image 1.** ABIN185194 (5µg/ml) staining of paraffin embedded Human Heart. Steamed antigen retrieval with citrate buffer pH 6, AP-staining.



#### Immunohistochemistry

**Image 2.** ABIN185194 (5µg/ml) staining of paraffin embedded Human Heart. Steamed antigen retrieval with citrate buffer pH 6, AP-staining.



#### Immunohistochemistry

**Image 3.** ABIN185194 (2µg/ml) staining of paraffin embedded Human Placenta. Microwaved antigen retrieval with citrate buffer pH 6, HRP-staining.