

Datasheet for ABIN1851962
anti-RRAGA/B antibody (C-Term)



[Go to Product page](#)

1 Image

Overview

Quantity:	100 µL
Target:	RRAGA/B
Binding Specificity:	C-Term
Reactivity:	Human, Mouse, Rat
Host:	Rabbit
Clonality:	Polyclonal
Conjugate:	This RRAGA/B antibody is un-conjugated
Application:	ELISA, Western Blotting (WB)

Product Details

Immunogen:	The antiserum was produced against synthesized peptide derived from C-terminal of human RRAGA/B.
Specificity:	Rabbit polyclonal antibody against RRAGA/B protein.
Purification:	The antibody was affinity-purified from rabbit antiserum by affinity-chromatography using epitope-specific immunogen

Target Details

Target:	RRAGA/B
Alternative Name:	RRAGA/B (RRAGA/B Products)
UniProt:	Q7L523 , Q5VZM2

Application Details

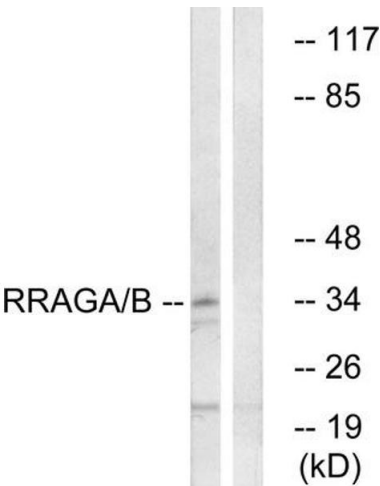
Restrictions: For Research Use only

Handling

Storage: -20 °C

Storage Comment: Aliquot and store at -20 °C. Avoid repeated freeze/thaw cycles.

Images



Western Blotting

Image 1. Western blot analysis of extracts from HepG2 cells, using RRAGA/B antibody.