

Datasheet for ABIN185200
anti-AKAP3 antibody (C-Term)[Go to Product page](#)

1 Image

Overview

Quantity:	100 µg
Target:	AKAP3
Binding Specificity:	C-Term
Reactivity:	Human
Host:	Goat
Clonality:	Polyclonal
Conjugate:	This AKAP3 antibody is un-conjugated
Application:	ELISA, Western Blotting (WB)

Product Details

Purpose:	AKAP3 / SOB1
Immunogen:	Peptide with sequence C-TPLQLLDWLMVNL, from the C Terminus of the protein sequence according to NP_006413.2.
Sequence:	TPLQLLDWLM VNL
Isotype:	IgG
Cross-Reactivity:	Cow, Dog, Human, Mouse, Pig, Rat
Purification:	Purified from goat serum by ammonium sulphate precipitation followed by antigen affinity chromatography using the immunizing peptide.
Grade:	Verified

Target Details

Target:	AKAP3
Alternative Name:	AKAP3 (AKAP3 Products)
Background:	AKAP3, SOB1, FSP95, PRKA3, AKAP110, A kinase (PRKA) anchor protein 3, fibrousheathin 1, sperm oocyte binding protein 1, CT82, A-kinase anchor protein 3, A-kinase anchor protein, 110 kDa, Fibrous Sheath Protein of 95 kDa, cancer/testis antigen 82, ibrous sh
Gene ID:	10566
NCBI Accession:	NP_006413

Application Details

Application Notes:	Western Blot: Approx 90 kDa band observed in Human Testis lysates (calculated MW of 95 kDa according to NP_006413). Recommended concentration: 1-3 µg/mL. Peptide ELISA: antibody detection limit dilution 1:32000.
Restrictions:	For Research Use only

Handling

Format:	Liquid
Concentration:	0.5 mg/mL
Buffer:	Supplied at 0.5 mg/mL in Tris saline, 0.02 % sodium azide, pH 7.3 with 0.5 % bovine serum albumin.
Preservative:	Sodium azide
Precaution of Use:	This product contains Sodium azide: a POISONOUS AND HAZARDOUS SUBSTANCE which should be handled by trained staff only.
Handling Advice:	Minimize freezing and thawing.
Storage:	-20 °C
Storage Comment:	Aliquot and store at -20°C, with minimal freeze/thawing. A working aliquot may be refrigerated at 4°C for a few weeks and still remain viable.

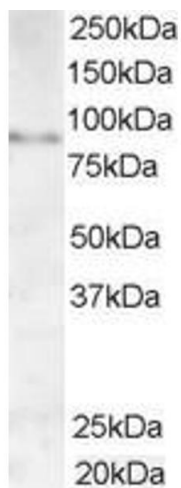


Image 1. ABIN185200 (1µg/ml) staining of Human Testis lysate (35µg protein in RIPA buffer). Primary incubation was 1 hour. Detected by chemiluminescence.