



[Go to Product page](#)

Datasheet for ABIN185203  
**anti-PITPNA antibody (C-Term)**

1 Image

Overview

Quantity:	100 µg
Target:	PITPNA
Binding Specificity:	C-Term
Reactivity:	Human
Host:	Goat
Clonality:	Polyclonal
Conjugate:	This PITPNA antibody is un-conjugated
Application:	Western Blotting (WB), ELISA

Product Details

Purpose:	PITPN / PITP alpha
Immunogen:	Peptide with sequence C-RQKDPVKGMTADD, from the C Terminus of the protein sequence according to NP_006215.1.
Sequence:	RQKDPVKGMT ADD
Isotype:	IgG
Cross-Reactivity:	Cow, Dog, Human, Mouse, Rat
Purification:	Purified from goat serum by ammonium sulphate precipitation followed by antigen affinity chromatography using the immunizing peptide.
Grade:	Verified

## Target Details

---

Target:	PITPNA
Alternative Name:	PITPN ( <a href="#">PITPNA Products</a> )
Background:	PITPN, PITP alpha, PITPNB, phosphatidylinositol transfer protein, phosphatidylinositol transfer protein
Gene ID:	5306, 18738, 29525
NCBI Accession:	<a href="#">NP_006215</a>

## Application Details

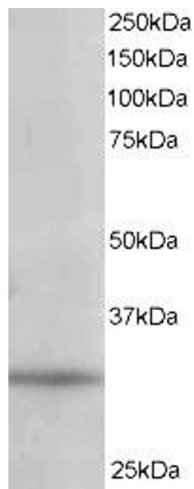
---

Application Notes:	Western Blot: Approx 32 kDa band observed in 293 and Human Liver lysates (predicted MW of 31 kDa according to NP_006215). Recommended for use at 1-3 µg/mL. Peptide ELISA: antibody detection limit dilution 1:4000.
Restrictions:	For Research Use only

## Handling

---

Format:	Liquid
Concentration:	0.5 mg/mL
Buffer:	Supplied at 0.5 mg/mL in Tris saline, 0.02 % sodium azide, pH 7.3 with 0.5 % bovine serum albumin.
Preservative:	Sodium azide
Precaution of Use:	This product contains Sodium azide: a POISONOUS AND HAZARDOUS SUBSTANCE which should be handled by trained staff only.
Handling Advice:	Minimize freezing and thawing.
Storage:	-20 °C
Storage Comment:	Aliquot and store at -20°C, with minimal freeze/thawing. A working aliquot may be refrigerated at 4°C for a few weeks and still remain viable.



### Western Blotting

**Image 1.** ABIN185203 staining (1 $\mu$ g/ml) of 293 lysate (RIPA buffer, 35 $\mu$ g total protein per lane). Primary incubated for 1 hour. Detected by western blot using chemiluminescence.