

Datasheet for ABIN185207
anti-AKAP8 antibody (N-Term)[Go to Product page](#)

1 Image

Overview

Quantity:	100 µg
Target:	AKAP8
Binding Specificity:	N-Term
Reactivity:	Human
Host:	Goat
Clonality:	Polyclonal
Conjugate:	This AKAP8 antibody is un-conjugated
Application:	Western Blotting (WB), ELISA

Product Details

Purpose:	AKAP8 / AKAP95
Immunogen:	Peptide with sequence DQGYGGYGAW SAG-C, from the N Terminus of the protein sequence according to NP_005849.1.
Sequence:	DQGYGGYGAW SAG
Isotype:	IgG
Cross-Reactivity:	Cow, Human, Mouse, Rat
Purification:	Purified from goat serum by ammonium sulphate precipitation followed by antigen affinity chromatography using the immunizing peptide.
Grade:	Verified

Target Details

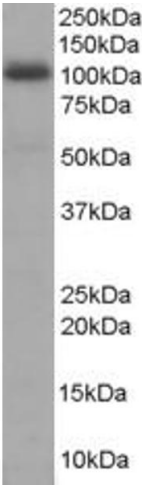
Target:	AKAP8
Alternative Name:	AKAP8 (AKAP8 Products)
Background:	AKAP8, AKAP95, DKFZp586B1222, A kinase (PRKA) anchor protein 8, A kinase anchor protein 95, A-kinase anchor protein 8, A-kinase anchor protein, 95 kDa
Gene ID:	10270, 56399, 116633
NCBI Accession:	NP_005849
Pathways:	SARS-CoV-2 Protein Interactome

Application Details

Application Notes:	Western Blot: Experiments gave a band at approx 100 kDa in Human Liver lysate after 1 µg/mL antibody staining. This band corresponds to the 95 kDa band reported in literature (PMID: 10601332). This protein has a calculated MW of 76.1 kDa according to NP_0058 Peptide ELISA: antibody detection limit dilution 1:32000.
Restrictions:	For Research Use only

Handling

Format:	Liquid
Concentration:	0.5 mg/mL
Buffer:	Supplied at 0.5 mg/mL in Tris saline, 0.02 % sodium azide, pH 7.3 with 0.5 % bovine serum albumin.
Preservative:	Sodium azide
Precaution of Use:	This product contains Sodium azide: a POISONOUS AND HAZARDOUS SUBSTANCE which should be handled by trained staff only.
Handling Advice:	Minimize freezing and thawing.
Storage:	-20 °C
Storage Comment:	Aliquot and store at -20°C, with minimal freeze/thawing. A working aliquot may be refrigerated at 4°C for a few weeks and still remain viable.



Western Blotting

Image 1. ABIN185207 staining (1µg/ml) of Human Liver lysate (RIPA buffer, 35µg total protein per lane). Primary incubated for 1 hour. Detected by western blot using chemiluminescence.