



[Go to Product page](#)

Datasheet for ABIN185209
anti-MPG antibody (C-Term)

3 Images

Overview

Quantity:	100 µg
Target:	MPG
Binding Specificity:	C-Term
Reactivity:	Human
Host:	Goat
Clonality:	Polyclonal
Conjugate:	This MPG antibody is un-conjugated
Application:	Western Blotting (WB), ELISA, Immunohistochemistry (IHC)

Product Details

Purpose:	MPG
Immunogen:	Peptide with sequence C-SVVDRAEQDTQA, from the C Terminus of the protein sequence according to NP_002425.2, NP_001015052.1, NP_001015054.1.
Sequence:	SVVDRAEQD TQA
Isotype:	IgG
Specificity:	This antibody is expected to recognize all three reported isoforms (NP_002425.2, NP_001015052.1 and NP_001015054.1)
Cross-Reactivity:	Human
Purification:	Purified from goat serum by ammonium sulphate precipitation followed by antigen affinity chromatography using the immunizing peptide.

Product Details

Grade: Verified

Target Details

Target: MPG

Alternative Name: MPG ([MPG Products](#))

Background: MDG, N-methylpurine-DNA glycosylase, AAG, APNG, CRA36.1, Mid1, N-methylpurine-DNA glycosylase, MPG, PIG11, PIG16, anpg, 3' end of the Mid1 gene, localized 68 kb upstream the humanzeta globin gene on 16p, CRA36.1 (3-methyl-adenine DNA glycosylase), alkylad

Gene ID: 4350

NCBI Accession: [NP_002425](#), [NP_001015052](#), [NP_001015054](#)

Pathways: [DNA Damage Repair](#)

Application Details

Application Notes: Immunohistochemistry: Paraffin embedded Human Uterus. Recommended concentration: 5 µg/mL.
Western Blot: Approx 37 kDa band observed in lysates of HEK293 and K562 (calculated MW of 32.9 kDa according to NP_002425.2). Recommended concentration: 1-3 µg/mL. Primary incubated for 1 hour.
Peptide ELISA: antibody detection limit dilution 1:1000.

Restrictions: For Research Use only

Handling

Format: Liquid

Concentration: 0.5 mg/mL

Buffer: Supplied at 0.5 mg/mL in Tris saline, 0.02 % sodium azide, pH 7.3 with 0.5 % bovine serum albumin.

Preservative: Sodium azide

Precaution of Use: This product contains Sodium azide: a POISONOUS AND HAZARDOUS SUBSTANCE which should be handled by trained staff only.

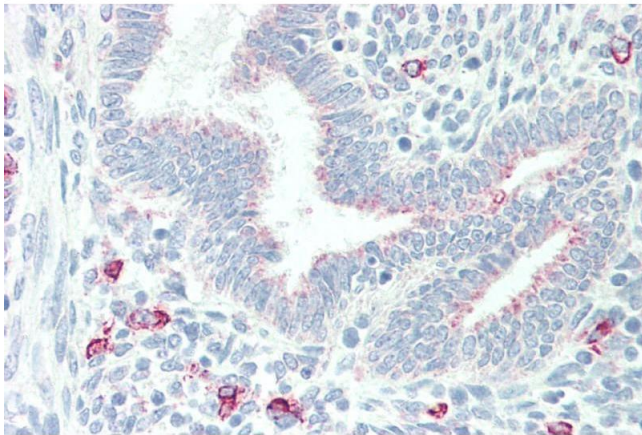
Handling Advice: Minimize freezing and thawing.

Handling

Storage: -20 °C

Storage Comment: Aliquot and store at -20°C, with minimal freeze/thawing. A working aliquot may be refrigerated at 4°C for a few weeks and still remain viable.

Images



Immunohistochemistry

Image 1. ABIN185209 (5µg/ml) staining of paraffin embedded Human Uterus. Steamed antigen retrieval with citrate buffer pH 6, AP-staining.



Western Blotting

Image 2. ABIN185209 staining (1µg/ml) of HEK293 lysate (RIPA buffer, 35µg total protein per lane). Detected by chemiluminescence.



Western Blotting

Image 3. ABIN185209 staining (2µg/ml) of K562 lysate (RIPA buffer, 35µg total protein per lane). Primary incubated for 1 hour. Detected by western blot using chemiluminescence.