

Datasheet for ABIN185219
anti-ACTR1A antibody (C-Term)

3 Images

[Go to Product page](#)

Overview

Quantity:	100 µg
Target:	ACTR1A
Binding Specificity:	C-Term
Reactivity:	Human, Mouse, Rat, Dog
Host:	Goat
Clonality:	Polyclonal
Conjugate:	This ACTR1A antibody is un-conjugated
Application:	Western Blotting (WB), ELISA, Flow Cytometry (FACS)

Product Details

Purpose:	ARP1 homolog A
Immunogen:	Peptide with sequence C-YEEDGARSIH RKT, from the C Terminus of the protein sequence according to NP_005727.1.
Sequence:	YEEDGARSIH RKT
Isotype:	IgG
Specificity:	This epitope was selected to minimise the chance of cross-reactivity with ACTR1B (YEEDGSRAIHRKT).
Cross-Reactivity:	Cow, Dog, Human, Mouse, Pig, Rat
Purification:	Purified from goat serum by ammonium sulphate precipitation followed by antigen affinity chromatography using the immunizing peptide.

Product Details

Grade: Verified

Target Details

Target:	ACTR1A
Alternative Name:	ACTR1A (ACTR1A Products)
Background:	ACTR1A, ARP1, ARP1 actin-related protein 1 homolog A, centractin alpha (yeast), actin-RPV, centractin alpha, ARP1, yeast homolog A, centrosome-associated actin homolog, ARP1 (actin-related protein 1, yeast) homolog A (centractin alpha), CTRN1, FLJ52695, F
Gene ID:	10121, 54130
NCBI Accession:	NP_005727
Pathways:	M Phase

Application Details

Application Notes:	Western Blot: Approx. 42-45 kDa band observed in lysates of cell lines A431 HEK293, HeLa, MCF7, NIH3T3, KNRK and MDCK, and in preliminary testing of Human and Mouse Adrenal gland and Mouse Stomach lysate (calculated MW of 42.6 kDa according to Human NP_005 Peptide ELISA: antibody detection limit dilution 1:64000.
Comment:	Immunofluorescence: A customer reported cytoplasmic staining on A431 cells at a primary ab concentration of 10ug/ml. Flow Cytometry: Flow cytometric analysis of A431 cells. Recommended concentration: 10ug/ml.
Restrictions:	For Research Use only

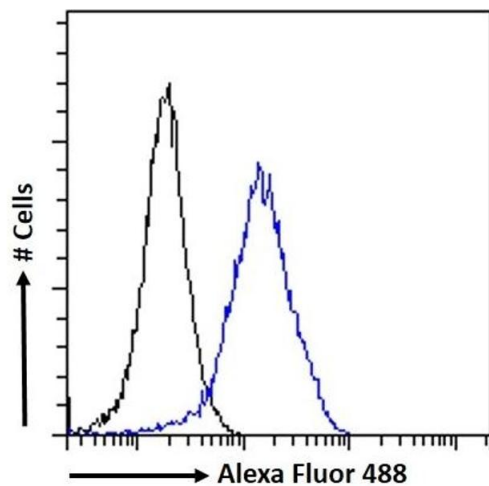
Handling

Format:	Liquid
Concentration:	0.5 mg/mL
Buffer:	Supplied at 0.5 mg/mL in Tris saline, 0.02 % sodium azide, pH 7.3 with 0.5 % bovine serum albumin.
Preservative:	Sodium azide
Precaution of Use:	This product contains Sodium azide: a POISONOUS AND HAZARDOUS SUBSTANCE which should be handled by trained staff only.

Handling

Handling Advice:	Minimize freezing and thawing.
Storage:	-20 °C
Storage Comment:	Aliquot and store at -20°C, with minimal freeze/thawing. A working aliquot may be refrigerated at 4°C for a few weeks and still remain viable.

Images



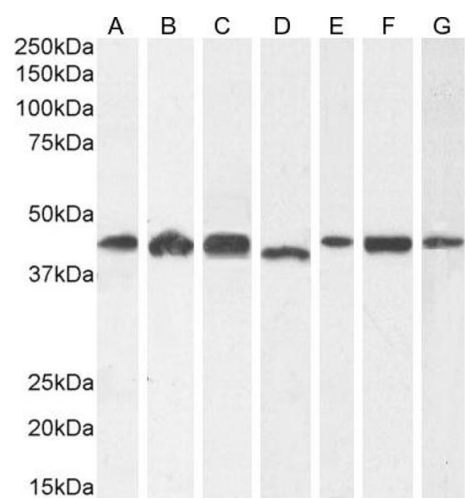
Flow Cytometry

Image 1. (ABIN185219) Flow cytometric analysis of paraformaldehyde fixed A431 cells (blue line), permeabilized with 0.5 % Triton. Primary incubation 1hr (10 µg/mL) followed by Alexa Fluor 488 secondary antibody (1 µg/mL). IgG control: Unimmunized goat IgG (black line) followed by Alexa Fluor 488 secondary antibody.



Western Blotting

Image 2. ABIN185219 staining (2µg/ml) of human kidney lysate (RIPA buffer, 35µg total protein per lane). Primary incubated for 1 hour. Detected by western blot using chemiluminescence.



Western Blotting

Image 3. (ABIN185219) (1 µg/mL) staining of A431 (A) and HeLa (B), (2 µg/mL) HEK293 (C) and (0.1 µg/mL) MCF7 (D), NIH3T3 (E), KNRK (F) and MDCK (G) cell lysate (35 µg protein in RIPA buffer). Detected by chemiluminescence.