

Datasheet for ABIN185220
anti-ACTR1B antibody (C-Term)

2 Images

[Go to Product page](#)

Overview

Quantity:	100 µg
Target:	ACTR1B
Binding Specificity:	C-Term
Reactivity:	Human
Host:	Goat
Clonality:	Polyclonal
Conjugate:	This ACTR1B antibody is un-conjugated
Application:	Western Blotting (WB), ELISA, Immunohistochemistry (IHC)

Product Details

Purpose:	ARP1 homolog B
Immunogen:	Peptide with sequence C-YEEDGSRAIHRKT, from the C Terminus of the protein sequence according to NP_005726.1.
Sequence:	YEEDGSRAIH RKT
Isotype:	IgG
Specificity:	This epitope was selected to minimise the chance of cross-reactivity with ACTR1A (YEEDGARSIRHKT).
Cross-Reactivity:	Cow, Dog, Human, Mouse, Rat
Purification:	Purified from goat serum by ammonium sulphate precipitation followed by antigen affinity chromatography using the immunizing peptide.

Product Details

Grade: Verified

Target Details

Target: ACTR1B

Alternative Name: ACTR1B ([ACTR1B Products](#))

Background: ACTR1B, ARP1B, CTRN2, ARP1 actin-related protein 1 homolog B, centractin beta (yeast), PC3, centractin beta, ARP1, yeast homolog B, ARP1 (actin-related protein 1, yeast) homolog B (centractin beta), ARP1 actin-related protein 1 homolog B, centractin beta

Gene ID: 10120, 226977

NCBI Accession: [NP_005726](#)

Application Details

Application Notes: Immunohistochemistry: In paraffin embedded Human Uterus shows fibrillar staining of cytoplasm in endometrial cells. Recommended concentration, 3-5 µg/mL.
Western Blot: Approx 45 kDa band observed in human heart and brain lysates (predicted MW of 43 kDa according to NP_005726). Recommended for use at 0.5-2 µg/mL.
Peptide ELISA: antibody detection limit dilution 1:128000.

Restrictions: For Research Use only

Handling

Format: Liquid

Concentration: 0.5 mg/mL

Buffer: Supplied at 0.5 mg/mL in Tris saline, 0.02 % sodium azide, pH 7.3 with 0.5 % bovine serum albumin.

Preservative: Sodium azide

Precaution of Use: This product contains Sodium azide: a POISONOUS AND HAZARDOUS SUBSTANCE which should be handled by trained staff only.

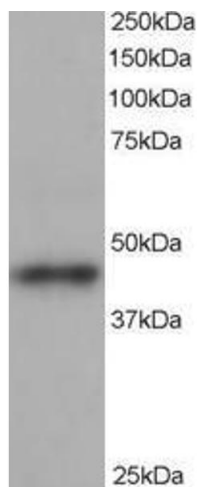
Handling Advice: Minimize freezing and thawing.

Storage: -20 °C

Storage Comment: Aliquot and store at -20°C, with minimal freeze/thawing. A working aliquot may be refrigerated

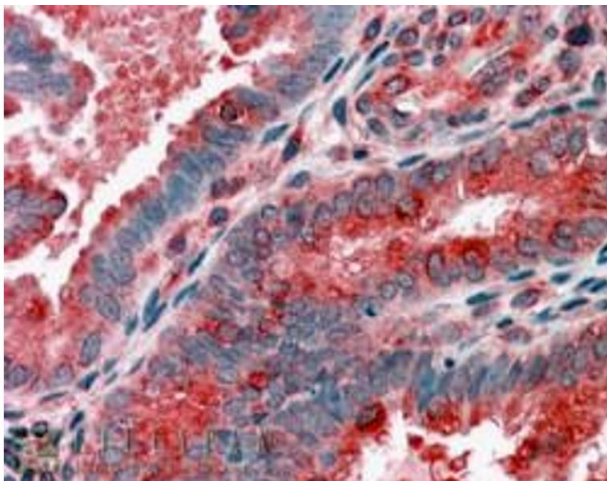
at 4°C for a few weeks and still remain viable.

Images



Western Blotting

Image 1. ABIN185220 staining (1µg/ml) of human heart lysate (RIPA buffer, 35µg total protein per lane). Primary incubated for 1 hour. Detected by western blot using chemiluminescence.



Immunohistochemistry

Image 2. ABIN185220 (3.8µg/ml) staining of paraffin embedded Human Uterus. Steamed antigen retrieval with citrate buffer pH 6, AP-staining.