



Datasheet for ABIN185226  
**anti-SNM1 antibody (C-Term)**



[Go to Product page](#)

1 Image

Overview

Quantity:	100 µg
Target:	SNM1 (DCLRE1A)
Binding Specificity:	C-Term
Reactivity:	Human
Host:	Goat
Clonality:	Polyclonal
Conjugate:	This SNM1 antibody is un-conjugated
Application:	ELISA, Immunohistochemistry (IHC)

Product Details

Purpose:	SNM1 (C Term)
Immunogen:	Peptide with sequence C-EKYFREWKLEAGY, from the C Terminus of the protein sequence according to NP_055696.3.
Sequence:	EKYFREWKLE AGY
Isotype:	IgG
Cross-Reactivity:	Human
Purification:	Purified from goat serum by ammonium sulphate precipitation followed by antigen affinity chromatography using the immunizing peptide.
Grade:	Verified

## Target Details

---

Target:	SNM1 (DCLRE1A)
Alternative Name:	DCLRE1A ( <a href="#">DCLRE1A Products</a> )
Background:	DCLRE1A, PSO2, SNM1, KIAA0086, DNA cross-link repair 1A (PSO2 homolog, <i>S. cerevisiae</i> ), DNA-crosslink repair gene SNM1, Artemis, SNM1A, DNA cross-link repair 1A, OTTHUMP00000020516
Gene ID:	9937
NCBI Accession:	<a href="#">NP_055696</a>

## Application Details

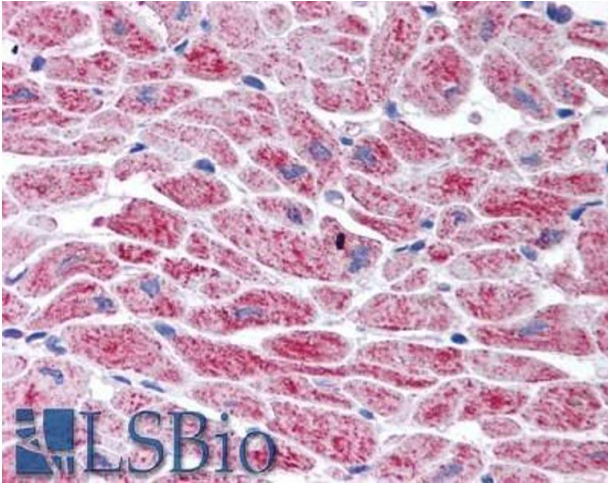
---

Application Notes:	Immunohistochemistry: Paraffin embedded Human Heart. Recommended concentration: 5 µg/mL. Western Blot: Preliminary experiments gave no signal but low background in Human Brain and Testis lysates at up to 1 µg/mL (note whole-cell RIPA lysates not nuclear lysates). Peptide ELISA: antibody detection limit dilution 1:16000.
Restrictions:	For Research Use only

## Handling

---

Format:	Liquid
Concentration:	0.5 mg/mL
Buffer:	Supplied at 0.5 mg/mL in Tris saline, 0.02 % sodium azide, pH 7.3 with 0.5 % bovine serum albumin.
Preservative:	Sodium azide
Precaution of Use:	This product contains Sodium azide: a POISONOUS AND HAZARDOUS SUBSTANCE which should be handled by trained staff only.
Handling Advice:	Minimize freezing and thawing.
Storage:	-20 °C
Storage Comment:	Aliquot and store at -20°C, with minimal freeze/thawing. A working aliquot may be refrigerated at 4°C for a few weeks and still remain viable.



### Immunohistochemistry

**Image 1.** ABIN185226 (5µg/ml) staining of paraffin embedded Human Heart. Steamed antigen retrieval with citrate buffer pH 6, AP-staining.