

Datasheet for ABIN185239
anti-FOXP3 antibody (C-Term)

6 Images

[Go to Product page](#)

Overview

Quantity:	100 µg
Target:	FOXP3
Binding Specificity:	C-Term
Reactivity:	Mouse
Host:	Goat
Clonality:	Polyclonal
Conjugate:	This FOXP3 antibody is un-conjugated
Application:	Flow Cytometry (FACS), ELISA, Immunohistochemistry (IHC), Immunofluorescence (IF)

Product Details

Purpose:	FOXP3 / Scurfin (Mouse)
Immunogen:	Peptide with sequence KRSQRPNKCSNP, from the C Terminus of the protein sequence according to NP_473380.1.
Sequence:	KRSQRPNKCS NP
Isotype:	IgG
Specificity:	Note - anti-mouse companion product of EB05294
Cross-Reactivity:	Mouse, Rat
Purification:	Purified from goat serum by ammonium sulphate precipitation followed by antigen affinity chromatography using the immunizing peptide.
Grade:	Verified

Target Details

Target:	FOXP3
Alternative Name:	Foxp3 (FOXP3 Products)
Background:	Foxp3, forkhead box P3, sf, JM2, scurfin, scurfy, RP23-54C14.1, OTTMUSP00000017952, OTTMUSP00000017961, OTTMUSP00000017962
Gene ID:	20371, 317382
NCBI Accession:	NP_473380
Pathways:	Chromatin Binding , Regulation of Leukocyte Mediated Immunity , Positive Regulation of Immune Effector Process , Production of Molecular Mediator of Immune Response , Activated T Cell Proliferation

Application Details

Application Notes:	Immunohistochemistry: Paraffin embedded Mouse Spleen. Recommended concentration: 5-6 µg/mL. Peptide ELISA: antibody detection limit dilution 1:32000.
Comment:	Immunofluorescence: Strong expression of the protein seen in the nuclei of NIH3T3 cells. Recommended concentration: 10µg/ml. Flow Cytometry: Flow cytometric analysis of NIH3T3 cells. Recommended concentration: 10ug/ml.
Restrictions:	For Research Use only

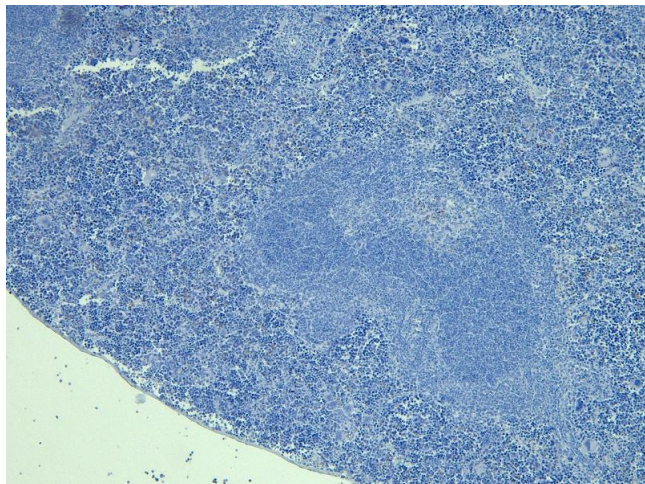
Handling

Format:	Liquid
Concentration:	0.5 mg/mL
Buffer:	Supplied at 0.5 mg/mL in Tris saline, 0.02 % sodium azide, pH 7.3 with 0.5 % bovine serum albumin.
Preservative:	Sodium azide
Precaution of Use:	This product contains Sodium azide: a POISONOUS AND HAZARDOUS SUBSTANCE which should be handled by trained staff only.
Handling Advice:	Minimize freezing and thawing.
Storage:	-20 °C

Handling

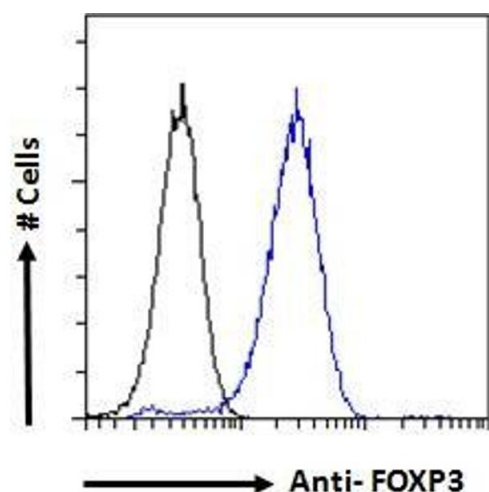
Storage Comment: Aliquot and store at -20°C, with minimal freeze/thawing. A working aliquot may be refrigerated at 4°C for a few weeks and still remain viable.

Images



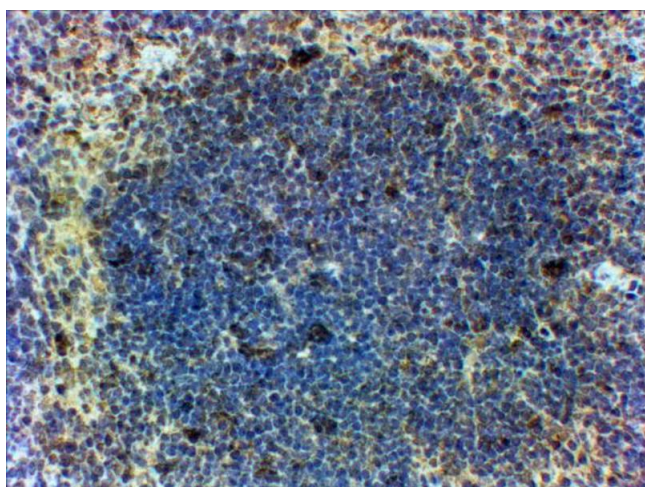
Immunohistochemistry

Image 1. (ABIN185239) Negative Control showing staining of paraaffin embedded Mouse Spleen, with no primary antibody.



Flow Cytometry

Image 2. ABIN185239 Flow cytometric analysis of paraformaldehyde fixed NIH3T3 cells (blue line), permeabilized with 0.5% Triton. Primary incubation 1hr (10ug/ml) followed by Alexa Fluor 488 secondary antibody (1ug/ml). IgG control: Unimmunized goat IgG (black line) followed by Alexa Fluor 488 secondary antibody.



Immunohistochemistry

Image 3. In paraaffin embedded Mouse Spleen shows patches of stained cells in the Germinal Centre. Recommended concentration, 2-4µg/ml.

Please check the [product details page](#) for more images. Overall 6 images are available for ABIN185239.