

Datasheet for ABIN185248
anti-FOXO3 antibody (C-Term)

6 Images

[Go to Product page](#)

Overview

Quantity:	100 µg
Target:	FOXO3
Binding Specificity:	C-Term
Reactivity:	Human
Host:	Goat
Clonality:	Polyclonal
Conjugate:	This FOXO3 antibody is un-conjugated
Application:	Western Blotting (WB), ELISA, Immunohistochemistry (IHC)

Product Details

Purpose:	FOXO3A / FOXO3 / FKHRL1
Immunogen:	Peptide with sequence C-GAKQASSQSWVPG, from the C Terminus of the protein sequence according to NP_001446.1.
Sequence:	GAKQASSQSW VPG
Isotype:	IgG
Specificity:	Both variants represent identical protein (NP_001446.1 and NP_963853.1).
Cross-Reactivity:	Cow, Dog, Human, Mouse, Pig, Rat
Purification:	Purified from goat serum by ammonium sulphate precipitation followed by antigen affinity chromatography using the immunizing peptide.
Grade:	Verified

Target Details

Target:	FOXO3
Alternative Name:	FOXO3 (FOXO3 Products)
Background:	FOXO3, FOXO3A, FKHRL1, AF6q21, FKHRL1P2, MGC12739, MGC31925, DKFZp781A0677, forkhead box O3A, forkhead (Drosophila) homolog, FOXO2, forkhead homolog (rhabdomyosarcoma) like 1, forkhead, Drosophila, homolog of, in rhabdomyosarcoma-like 1 (rhabdomyosarcoma)
Gene ID:	2309, 56484
NCBI Accession:	NP_001446
Pathways:	Cell Division Cycle , Fc-epsilon Receptor Signaling Pathway , EGFR Signaling Pathway , Neurotrophin Signaling Pathway , Carbohydrate Homeostasis

Application Details

Application Notes:	Immunohistochemistry: Paraffin embedded Human Kidney. Recommended concentration: 5 µg/mL. Western Blot: Approx 70 kDa band observed in Human Heart lysates (calculated MW of 71.3 kDa according to NP_001446.1). Recommended concentration: 0.1-1 µg/mL. Primary incubation was 1 hour. Preliminary testing was unsuccessful on Mouse for this particular Peptide ELISA: antibody detection limit dilution 1:8000.
Restrictions:	For Research Use only

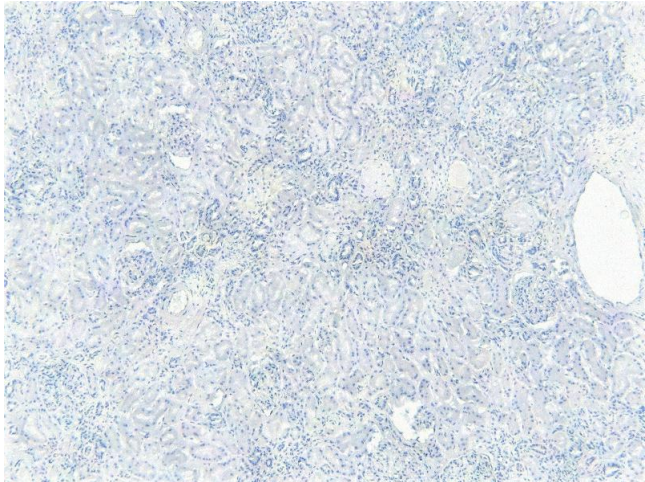
Handling

Format:	Liquid
Concentration:	0.5 mg/mL
Buffer:	Supplied at 0.5 mg/mL in Tris saline, 0.02 % sodium azide, pH 7.3 with 0.5 % bovine serum albumin.
Preservative:	Sodium azide
Precaution of Use:	This product contains Sodium azide: a POISONOUS AND HAZARDOUS SUBSTANCE which should be handled by trained staff only.
Handling Advice:	Minimize freezing and thawing.
Storage:	-20 °C

Handling

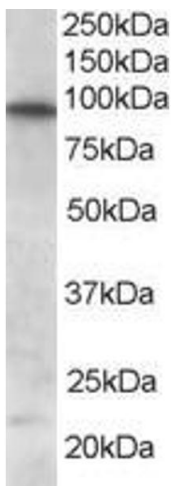
Storage Comment: Aliquot and store at -20°C, with minimal freeze/thawing. A working aliquot may be refrigerated at 4°C for a few weeks and still remain viable.

Images



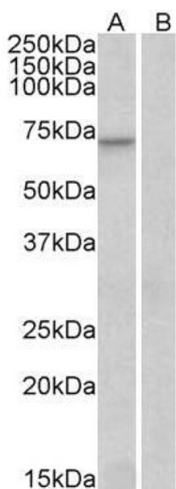
Immunohistochemistry

Image 1. (ABIN185248) Negative Control showing staining of paraffin embedded Human Kidney, with no primary antibody.



Western Blotting

Image 2. ABIN185248 staining (0.5µg/ml) of Human Brain lysate (RIPA buffer, 35µg total protein per lane). Primary incubated for 1 hour. Detected by western blot using chemiluminescence.



Western Blotting

Image 3. ABIN185248 (0.3µg/ml) staining of Human Heart lysate (35µg protein in RIPA buffer) with (A) and without (B) blocking with the immunising peptide. Detected by chemiluminescence.

Please check the [product details page](#) for more images. Overall 6 images are available for ABIN185248.