

Datasheet for ABIN185253
anti-BIM antibody (C-Term)



[Go to Product page](#)

1 Image

Overview

Quantity:	100 µg
Target:	BIM (BCL2L11)
Binding Specificity:	C-Term
Reactivity:	Human
Host:	Goat
Clonality:	Polyclonal
Conjugate:	This BIM antibody is un-conjugated
Application:	Western Blotting (WB), ELISA

Product Details

Purpose:	BIM
Immunogen:	Peptide with sequence C-FNAYYARRLEK, from the C Terminus of the protein sequence according to NP_619528.1, NP_619529.1, NP_996886.1,.
Sequence:	FNAYYARRLE K
Isotype:	IgG
Specificity:	This antibody is expected to recognise at least reported isoforms Bim-alpha1 (BimABCD), Bim-alpha2 (BimACD) and Bim-alpha3 (BimAD).
Cross-Reactivity:	Human
Purification:	Purified from goat serum by ammonium sulphate precipitation followed by antigen affinity chromatography using the immunizing peptide.

Product Details

Grade: Verified

Target Details

Target:	BIM (BCL2L11)
Alternative Name:	BCL2L11 (BCL2L11 Products)
Background:	BCL2L11, BCL2-like 11 (apoptosis facilitator), BAM, BIM, BOD, bcl-2 interacting mediator of cell death, bcl-2 interacting protein Bim, bcl-2-like protein 11, bcl-2-related ovarian death agonist, bcl2-L-11, Bim-alpha1, Bim-alpha2, Bim-alpha3
Gene ID:	10018
NCBI Accession:	NP_619528 , NP_619529 , NP_996886
Pathways:	PI3K-Akt Signaling , Neurotrophin Signaling Pathway , Tube Formation , Positive Regulation of Endopeptidase Activity

Application Details

Application Notes:	Western Blot: Approx 23 kDa band observed in lysates of cell line K562 (calculated MW of 18.5 kDa according to NP_619528.1). Recommended for use at 0.5-2 µg/mL. Primary incubated 1 hour at room temperature. Peptide ELISA: antibody detection limit dilution 1:16000.
Restrictions:	For Research Use only

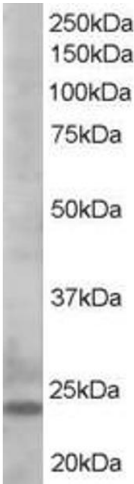
Handling

Format:	Liquid
Concentration:	0.5 mg/mL
Buffer:	Supplied at 0.5 mg/mL in Tris saline, 0.02 % sodium azide, pH 7.3 with 0.5 % bovine serum albumin.
Preservative:	Sodium azide
Precaution of Use:	This product contains Sodium azide: a POISONOUS AND HAZARDOUS SUBSTANCE which should be handled by trained staff only.
Handling Advice:	Minimize freezing and thawing.
Storage:	-20 °C

Handling

Storage Comment: Aliquot and store at -20°C, with minimal freeze/thawing. A working aliquot may be refrigerated at 4°C for a few weeks and still remain viable.

Images



Western Blotting

Image 1. ABIN185253 staining (0.5µg/ml) of K562 lysate (RIPA buffer, 35µg total protein per lane). Detected by western blot using chemiluminescence.