

Datasheet for ABIN1852552

anti-HBAP1 antibody (Internal Region)[Go to Product page](#)**1** Image

Overview

Quantity:	100 µL
Target:	HBAP1
Binding Specificity:	Internal Region
Reactivity:	Human
Host:	Rabbit
Clonality:	Polyclonal
Conjugate:	This HBAP1 antibody is un-conjugated
Application:	ELISA, Western Blotting (WB)

Product Details

Immunogen:	The antiserum was produced against synthesized peptide derived from internal of human HBAP1.
Specificity:	Rabbit polyclonal antibody against HBAP1 protein.
Purification:	The antibody was affinity-purified from rabbit antiserum by affinity-chromatography using epitope-specific immunogen

Target Details

Target:	HBAP1
Alternative Name:	HBAP1 (HBAP1 Products)
UniProt:	Q96EW2

Application Details

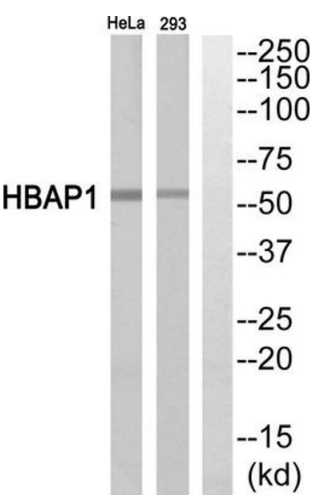
Restrictions: For Research Use only

Handling

Storage: -20 °C

Storage Comment: Aliquot and store at -20 °C. Avoid repeated freeze/thaw cycles.

Images



Western Blotting

Image 1. Western blot analysis of extracts from HeLa cells and 293 cells, using HBAP1 antibody.