

Datasheet for ABIN185257
anti-RANBP1 antibody (C-Term)

8 Images

[Go to Product page](#)

Overview

Quantity:	100 µg
Target:	RANBP1
Binding Specificity:	C-Term
Reactivity:	Human
Host:	Goat
Clonality:	Polyclonal
Conjugate:	This RANBP1 antibody is un-conjugated
Application:	Western Blotting (WB), ELISA, Immunohistochemistry (IHC), Immunofluorescence (IF), Flow Cytometry (FACS)

Product Details

Purpose:	RANBP1
Immunogen:	C-LSVKEETKEDAEKQ
Sequence:	LSVKEETKED AEEKQ
Isotype:	IgG
Specificity:	This antibody is expected to recognise reported isoforms 1, 2, 3 and 4.
Cross-Reactivity:	Human
Purification:	Purified from goat serum by ammonium sulphate precipitation followed by antigen affinity chromatography using the immunizing peptide.
Grade:	Verified

Target Details

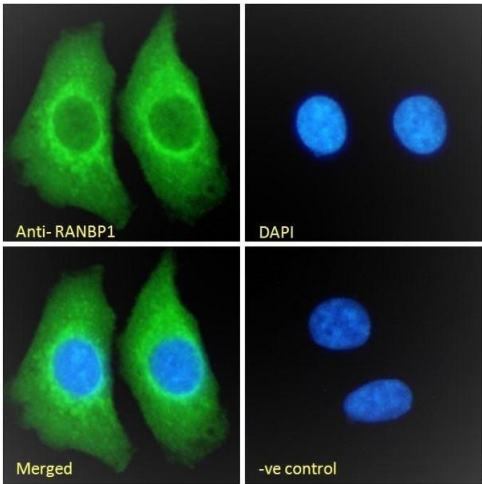
Target:	RANBP1
Alternative Name:	RANBP1 (RANBP1 Products)
Background:	RANBP1, RAN binding protein 1, HTF9A, MGC88701
Gene ID:	5902
NCBI Accession:	NP_002873

Application Details

Application Notes:	<p>Immunohistochemistry: In paraffin embedded Human Kidney shows pixulated cytoplasm staining in DCT. Recommended concentration: 3-5 µg/mL.</p> <p>Western Blot: Approx. 26-27 kDa band observed in lysates of cell lines A431 HeLa and MCF7 and in Human Duodenum lysates, (calculated MW of 23.3 kDa according to NP_002873.1). This molecular weight is routinely observed by other sources. Recommended concent</p> <p>Peptide ELISA: antibody detection limit dilution 1:16000.</p>
Comment:	<p>Immunofluorescence: Strong expression of the protein seen in the cytoplasm of HEK293 and HeLa cells. Recommended concentration: 10µg/ml.</p> <p>Flow Cytometry: Flow cytometric analysis of HEK293 cells. Recommended concentrati</p>
Restrictions:	For Research Use only

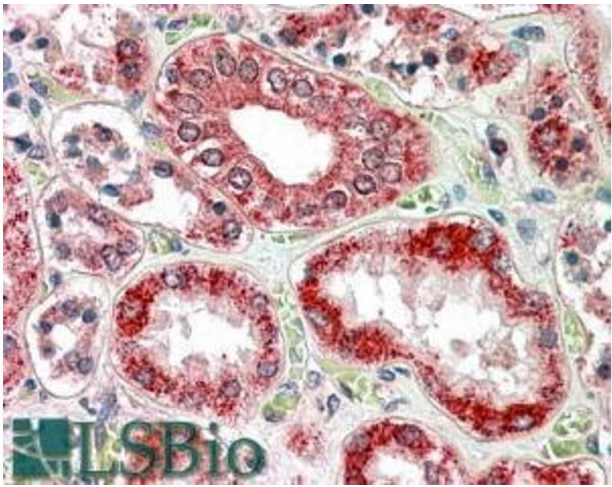
Handling

Format:	Liquid
Concentration:	0.5 mg/mL
Buffer:	Supplied at 0.5 mg/mL in Tris saline, 0.02 % sodium azide, pH 7.3 with 0.5 % bovine serum albumin.
Preservative:	Sodium azide
Precaution of Use:	This product contains Sodium azide: a POISONOUS AND HAZARDOUS SUBSTANCE which should be handled by trained staff only.
Handling Advice:	Minimize freezing and thawing.
Storage:	-20 °C
Storage Comment:	Aliquot and store at -20°C, with minimal freeze/thawing. A working aliquot may be refrigerated at 4°C for a few weeks and still remain viable.



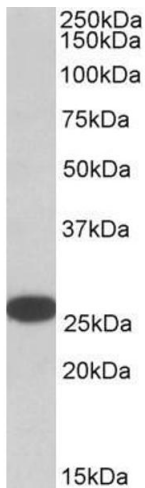
Immunofluorescence

Image 1. (ABIN185257) Immunofluorescence analysis of paraformaldehyde fixed HEK293 cells, permeabilized with 0.15 % Triton. Primary incubation 1hr (10 µg/mL) followed by Alexa Fluor 488 secondary antibody (2 µg/mL), showing cytoplasmic staining. The nuclear stain is DAPI



Immunohistochemistry

Image 2. ABIN185257 (3.8µg/ml) staining of paraffin embedded Human Kidney. Steamed antigen retrieval with citrate buffer pH 6, AP-staining.



Western Blotting

Image 3. ABIN185257 (0.05µg/ml) staining of HeLa lysate (35µg protein in RIPA buffer). Detected by chemiluminescence.

Please check the [product details page](#) for more images. Overall 8 images are available for ABIN185257.