

Datasheet for ABIN185265  
**anti-Pirin antibody (N-Term)**[Go to Product page](#)

## 3 Images

## Overview

Quantity:	100 µg
Target:	Pirin (PIR)
Binding Specificity:	N-Term
Reactivity:	Human
Host:	Goat
Clonality:	Polyclonal
Conjugate:	This Pirin antibody is un-conjugated
Application:	ELISA, Western Blotting (WB), Immunohistochemistry (IHC)

## Product Details

Purpose:	Pirin
Immunogen:	Peptide with sequence GSSKKVTLSVLSREC, from the N Terminus of the protein sequence according to NP_003653.1.
Sequence:	GSSKKVTLSV LSREC
Isotype:	IgG
Specificity:	Variants (NP_003653.1, NP_001018119.1) encode the same protein
Cross-Reactivity:	Human, Mouse
Purification:	Purified from goat serum by ammonium sulphate precipitation followed by antigen affinity chromatography using the immunizing peptide.
Grade:	Verified

## Target Details

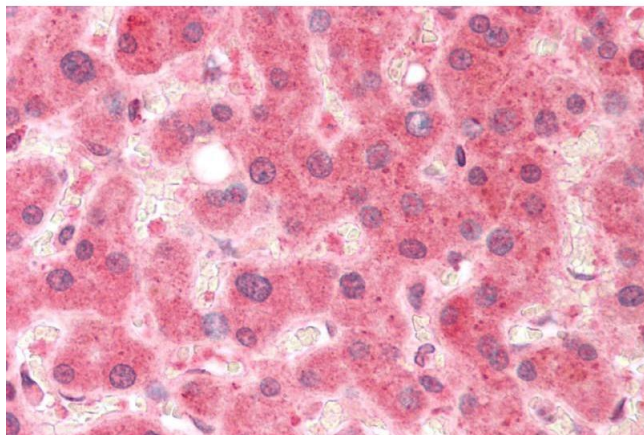
Target:	Pirin (PIR)
Alternative Name:	PIR ( <a href="#">PIR Products</a> )
Background:	PIR, pirin, pirin (iron-binding nuclear protein)
Gene ID:	8544
NCBI Accession:	<a href="#">NP_003653</a>

## Application Details

Application Notes:	<p>Immunohistochemistry: Paraffin embedded Human Liver and Spleen. Recommended concentration: 5 µg/mL.</p> <p>Western Blot: Approx 33 kDa band observed in Human Heart lysate (calculated MW of 32.1 kDa according to NP_003653.1). Recommended concentration: 0.3 - 1.0 µg/mL. Primary incubation was 1 hour.</p> <p>Peptide ELISA: antibody detection limit dilution 1:128000.</p>
Restrictions:	For Research Use only

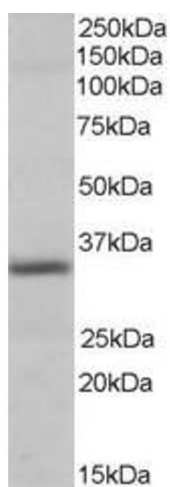
## Handling

Format:	Liquid
Concentration:	0.5 mg/mL
Buffer:	Supplied at 0.5 mg/mL in Tris saline, 0.02 % sodium azide, pH 7.3 with 0.5 % bovine serum albumin.
Preservative:	Sodium azide
Precaution of Use:	This product contains Sodium azide: a POISONOUS AND HAZARDOUS SUBSTANCE which should be handled by trained staff only.
Handling Advice:	Minimize freezing and thawing.
Storage:	-20 °C
Storage Comment:	Aliquot and store at -20°C, with minimal freeze/thawing. A working aliquot may be refrigerated at 4°C for a few weeks and still remain viable.

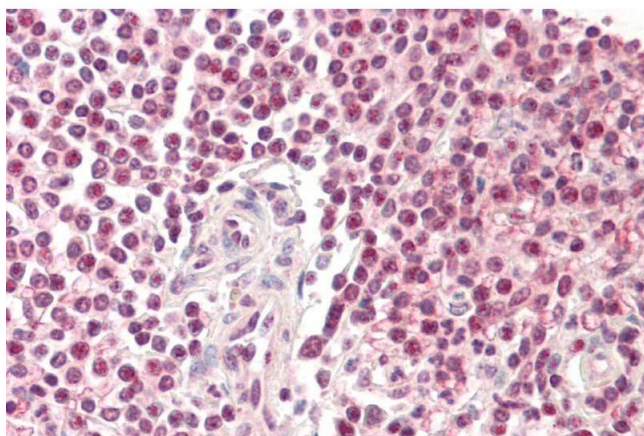


#### Immunohistochemistry

**Image 1.** ABIN185265 (5µg/ml) staining of paraffin embedded Human Liver. Steamed antigen retrieval with citrate buffer pH 6, AP-staining.



**Image 2.** ABIN185265 (0.3µg/ml) staining of Human Heart lysate (35µg protein in RIPA buffer). Primary incubation was 1 hour. Detected by chemiluminescence.



#### Immunohistochemistry

**Image 3.** ABIN185265 (5µg/ml) staining of paraffin embedded Human Spleen. Steamed antigen retrieval with citrate buffer pH 6, AP-staining.