

Datasheet for ABIN185268  
**anti-FTCD antibody (Internal Region)**

10 Images

[Go to Product page](#)

## Overview

Quantity:	100 µg
Target:	FTCD
Binding Specificity:	Internal Region
Reactivity:	Human, Mouse, Pig
Host:	Goat
Clonality:	Polyclonal
Conjugate:	This FTCD antibody is un-conjugated
Application:	Western Blotting (WB), ELISA, Immunofluorescence (IF), Flow Cytometry (FACS)

## Product Details

Purpose:	58KGolgi protein(Internal)/FTCD
Immunogen:	Peptide with sequence CLREQGRGKDQPGRL, from the internal region of the protein sequence according to NP_006648.1, NP_996848.1.
Sequence:	CLREQGRGKD QPGRL
Isotype:	IgG
Specificity:	Variants (NP_006648.1, NP_996848.1) encode the same protein.
Cross-Reactivity:	Cow, Human, Mouse, Pig, Rat
Purification:	Purified from goat serum by ammonium sulphate precipitation followed by antigen affinity chromatography using the immunizing peptide.
Grade:	Verified

## Target Details

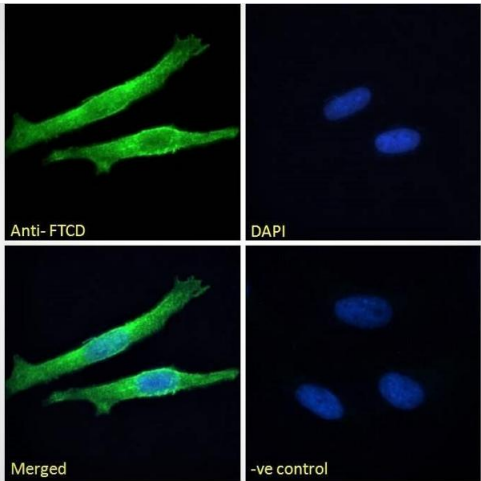
Target:	FTCD
Alternative Name:	FTCD ( <a href="#">FTCD Products</a> )
Background:	FTCD, LCHC1, formiminotransferase cyclodeaminase, formimidoyltransferase cyclodeaminase, LC1 autoantigen
Gene ID:	10841
NCBI Accession:	<a href="#">NP_006648</a> , <a href="#">NP_996848</a> , <a href="#">NP_001307341</a>

## Application Details

Application Notes:	Western Blot: Approx 60 kDa band observed in Human and Mouse Liver lysates and approx. 55-60 kDa in Pig Liver lysates, and also in preliminary testing of Rat Liver and Human Kidney lysates (calculated MW of 58.9 kDa according to Human NP_006648.1, Mouse NP_001307341). Peptide ELISA: antibody detection limit dilution 1:64000.
Comment:	<b>Immunofluorescence:</b> Strong expression of the protein seen in the cytoplasm and plasma membranes of HeLa and in the membranes of HepG2 cells. Recommended concentration: 10 µg/ml. <b>Flow Cytometry:</b> Flow cytometric analysis
Restrictions:	For Research Use only

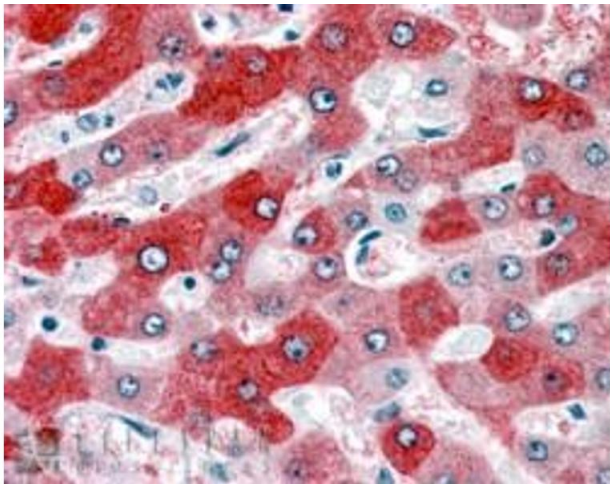
## Handling

Format:	Liquid
Concentration:	0.5 mg/mL
Buffer:	Supplied at 0.5 mg/mL in Tris saline, 0.02 % sodium azide, pH 7.3 with 0.5 % bovine serum albumin.
Preservative:	Sodium azide
Precaution of Use:	This product contains Sodium azide: a POISONOUS AND HAZARDOUS SUBSTANCE which should be handled by trained staff only.
Handling Advice:	Minimize freezing and thawing.
Storage:	-20 °C
Storage Comment:	Aliquot and store at -20°C, with minimal freeze/thawing. A working aliquot may be refrigerated at 4°C for a few weeks and still remain viable.



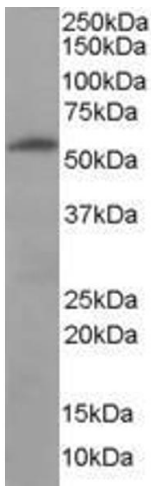
### Immunofluorescence

**Image 1.** ABIN185268 Immunofluorescence analysis of paraformaldehyde fixed HeLa cells, permeabilized with 0.15 % Triton. Primary incubation 1hr (10 µg/mL) followed by Alexa Fluor 488 secondary antibody (2 µg/mL), showing plasma membrane and cytoplasmic staining. The nucl



### Immunohistochemistry

**Image 2.** ABIN185268 (3.75µg/ml) staining of paraffin embedded Human Liver. Steamed antigen retrieval with citrate buffer pH 6, AP-staining.



### Western Blotting

**Image 3.** Antibody (3.8µg/ml) staining of paraffin embedded Human Liver. Steamed antigen retrieval with citrate buffer pH 6, AP-staining.

Please check the [product details page](#) for more images. Overall 10 images are available for ABIN185268.