

Datasheet for ABIN185273

**anti-TAO Kinase 3 antibody (Internal Region)****2** Images[Go to Product page](#)

## Overview

Quantity:	100 µg
Target:	TAO Kinase 3 (TAOK3)
Binding Specificity:	Internal Region
Reactivity:	Human
Host:	Goat
Clonality:	Polyclonal
Conjugate:	This TAO Kinase 3 antibody is un-conjugated
Application:	Western Blotting (WB), ELISA, Immunohistochemistry (IHC)

## Product Details

Purpose:	JIK / TAOK3
Immunogen:	Peptide with sequence CHKKDHFVFIRDEAGHGD, from the internal region of the protein sequence according to NP_057365.3.
Sequence:	CHKKDHFVFIR DEAGHGD
Isotype:	IgG
Cross-Reactivity:	Cow, Dog, Human, Mouse, Rat
Purification:	Purified from goat serum by ammonium sulphate precipitation followed by antigen affinity chromatography using the immunizing peptide.
Grade:	Verified

## Target Details

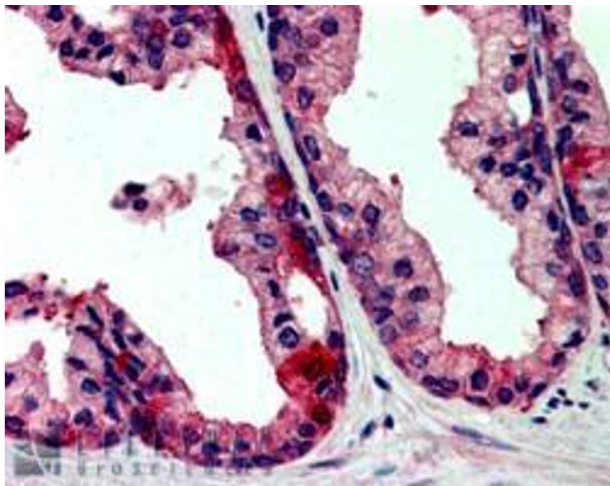
Target:	TAO Kinase 3 (TAOK3)
Alternative Name:	TAOK3 ( <a href="#">TAOK3 Products</a> )
Background:	TAOK3, JIK, TAO kinase 3, DPK, STE2-like kinase, DKFZp666H245, FLJ31808, MAP3K18, CTCL-associated antigen HD-CL-09, JNK/SAPK-inhibitory kinase, STE20-like kinase, cutaneous T-cell lymphoma-associated antigen HD-CL-09, dendritic cell-derived protein kinase
Gene ID:	51347, 304530
NCBI Accession:	<a href="#">NP_057365</a>

## Application Details

Application Notes:	<p>Immunohistochemistry: In paraffin embedded Human Prostate shows staining of cytoplasm of secretory cells in the glands. Recommended concentration, 2-3 µg/mL.</p> <p>Western Blot: Approx 100 kDa band observed in human Liver lysate (calculated MW of 105 kDa according to NP_057365). Recommended concentration: 0.3-1.0 µg/mL.</p> <p>Peptide ELISA: antibody detection limit dilution 1:32000.</p>
Restrictions:	For Research Use only

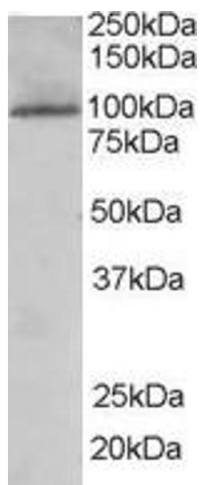
## Handling

Format:	Liquid
Concentration:	0.5 mg/mL
Buffer:	Supplied at 0.5 mg/mL in Tris saline, 0.02 % sodium azide, pH 7.3 with 0.5 % bovine serum albumin.
Preservative:	Sodium azide
Precaution of Use:	This product contains Sodium azide: a POISONOUS AND HAZARDOUS SUBSTANCE which should be handled by trained staff only.
Handling Advice:	Minimize freezing and thawing.
Storage:	-20 °C
Storage Comment:	Aliquot and store at -20°C, with minimal freeze/thawing. A working aliquot may be refrigerated at 4°C for a few weeks and still remain viable.



#### Immunohistochemistry

**Image 1.** ABIN185273 (2.5µg/ml) staining of paraffin embedded Human Prostate. Steamed antigen retrieval with citrate buffer pH 6, AP-staining.



**Image 2.** ABIN185273 (0.1µg/ml) staining of human liver lysate (35µg protein in RIPA buffer). Primary incubation was 1 hour. Detected by chemiluminescence.